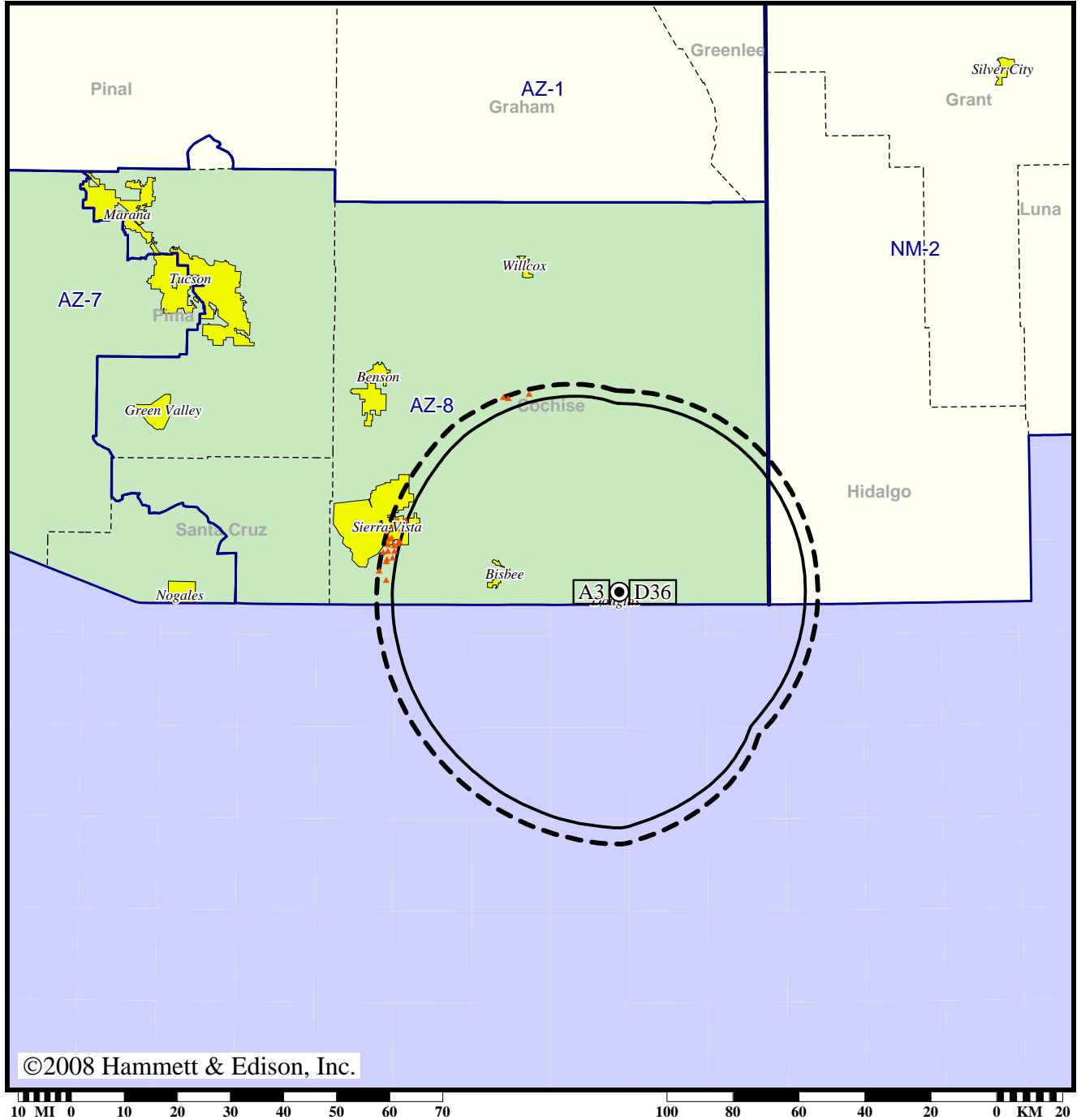


Station KFTU-TV • Analog Channel 3, DTV Channel 36 • Douglas, AZ

Expected Change In Coverage: Post-Transition Appendix B Facility

Appendix B (solid): 1000 kW ERP at 9 m HAAT
vs. Analog (dashed): 100 kW ERP at 9 m HAAT

Market: Tucson, AZ



- (no symbol) No change in coverage
- ▲ Coverage lost after DTV transition

Tucson, AZ

KFTU-TV

Population Receiving Analog Service	57,378
Population Receiving Digital Service.....	36,478

The following statistics pertain only to the area outside the analog service contour:

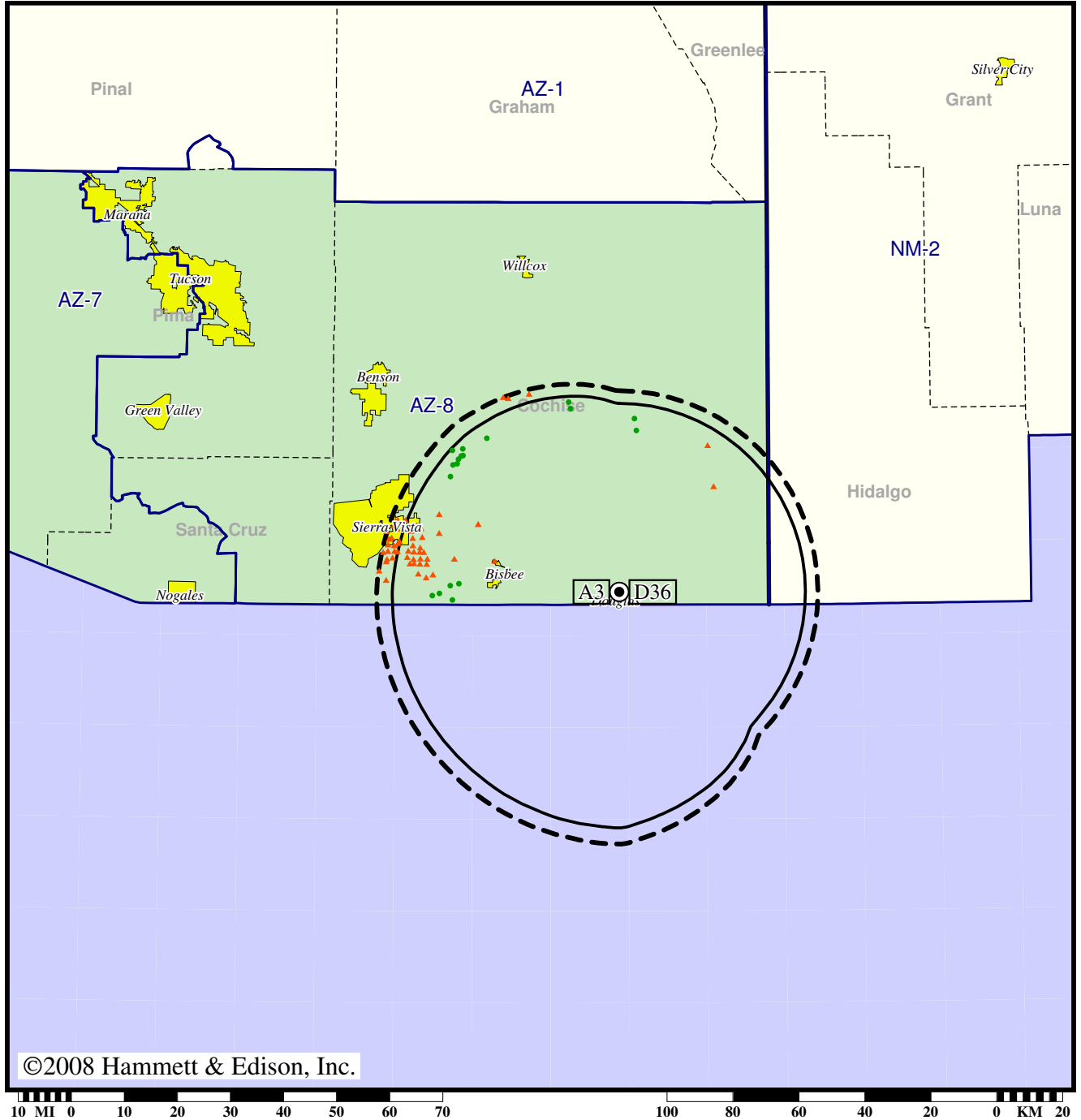
Analog Population Losing Service	18,739
Population Gaining Digital Service	0
Net Gain	-18,739

Station KFTU-TV • Analog Channel 3, DTV Channel 36 • Douglas, AZ

Expected Change In Coverage: Post-Transition Appendix B Facility

Appendix B (solid): 1000 kW ERP at 9 m HAAT
vs. Analog (dashed): 100 kW ERP at 9 m HAAT

Market: Tucson, AZ



- Coverage gained after DTV transition
- (no symbol) No change in coverage
- ▲ Coverage lost after DTV transition

Tucson, AZ

KFTU-TV

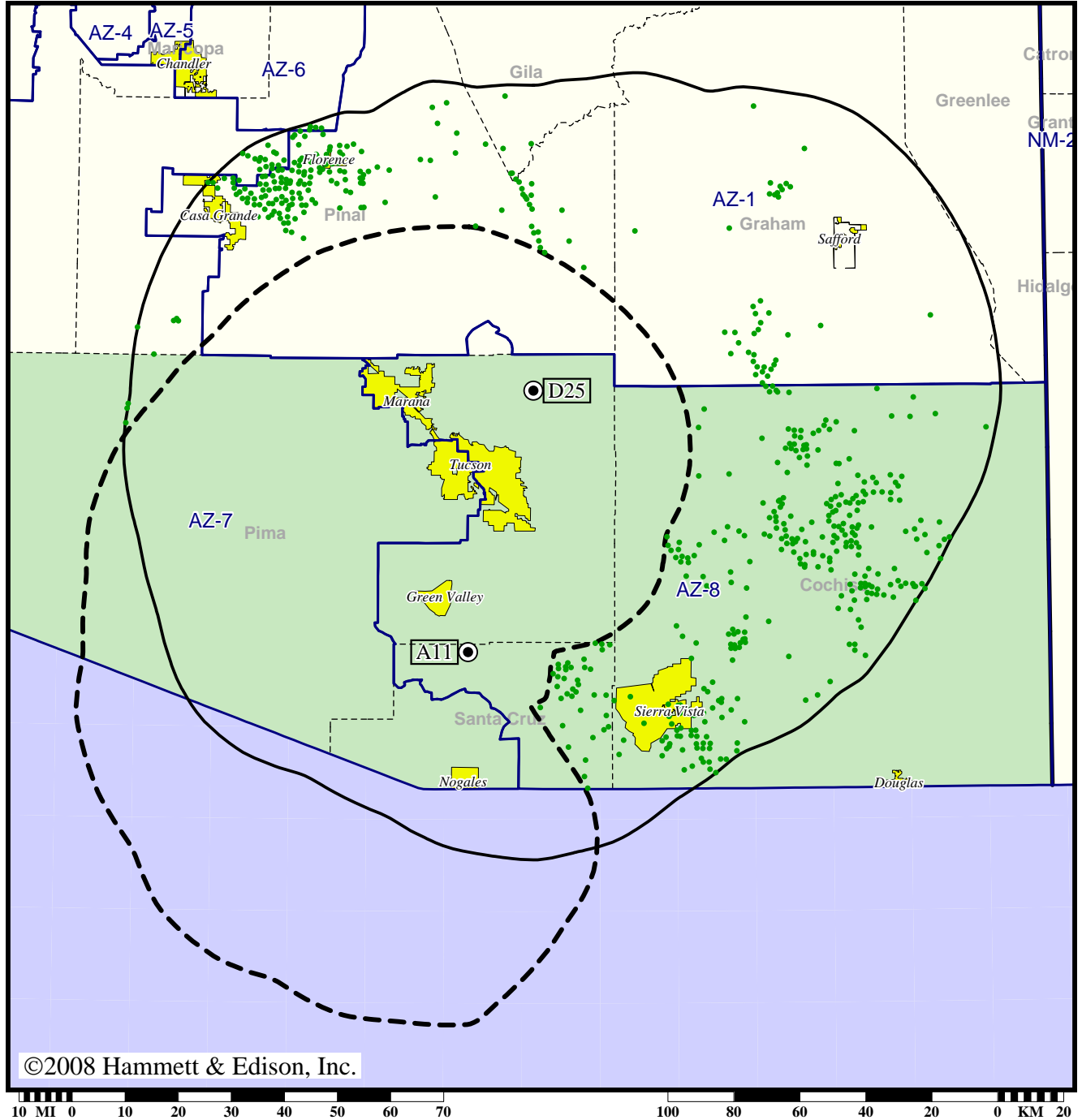
Population Receiving Analog Service	57,378
Population Receiving Digital Service.....	36,478
Analog Population Losing Service	22,447
Population Gaining Digital Service	1,547
Net Gain	-20,900

Station KMSB-TV • Analog Channel 11, DTV Channel 25 • Tucson, AZ

Expected Change In Coverage: Licensed Operation

Licensed (solid): 480 kW ERP at 1123 m HAAT, Network: Fox
vs. Analog (dashed): 316 kW ERP at 507 m HAAT, Network: Fox

Market: Tucson, AZ



- Coverage gained after DTV transition
- (no symbol) No change in coverage

Tucson, AZ

KMSB-TV

Population Receiving Analog Service 856,651
Population Receiving Digital Service..... 869,396

The following statistics pertain only to the area outside
the analog service contour:

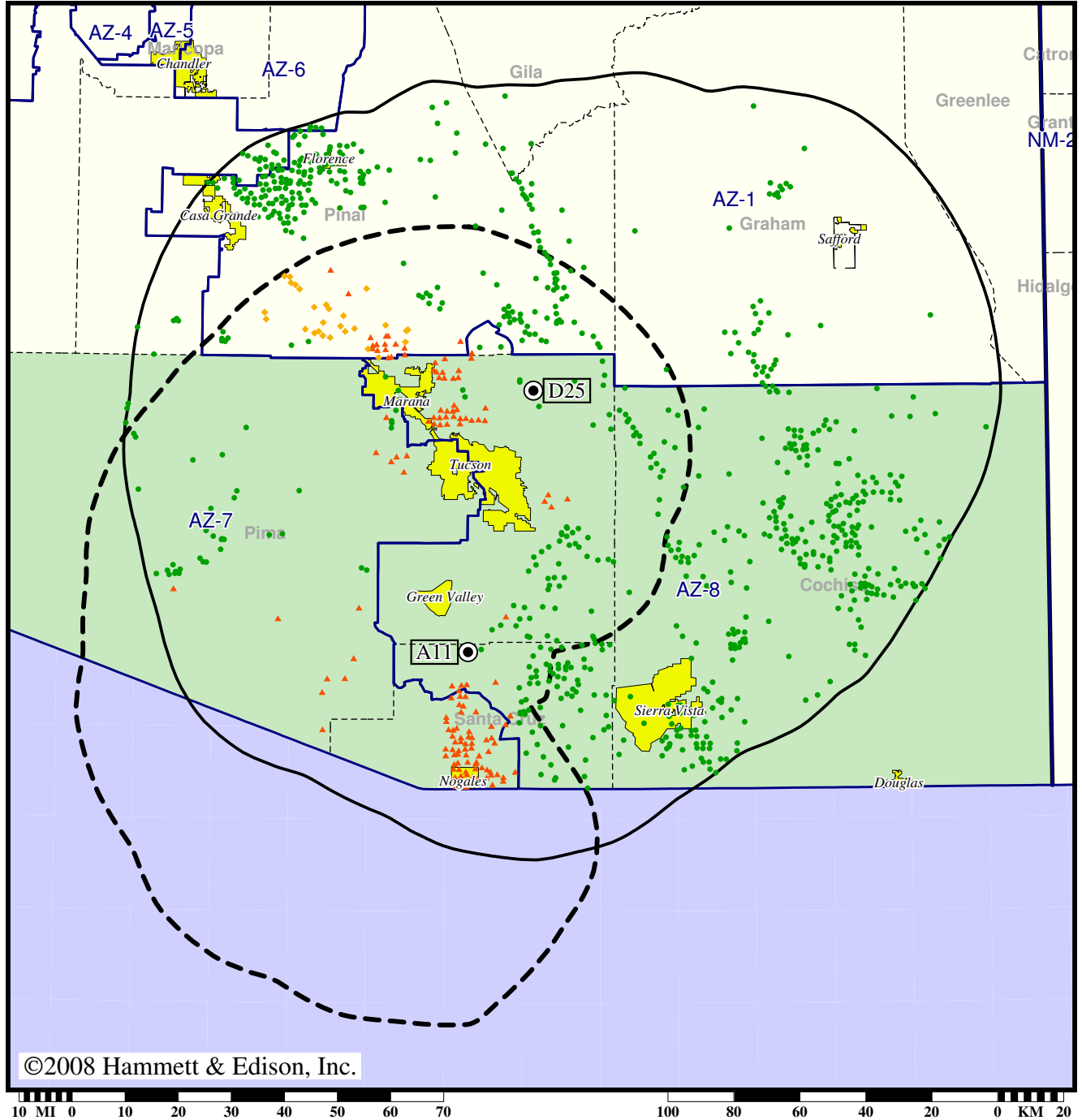
Analog Population Losing Service 0
Population Gaining Digital Service 76,396
Net Gain 76,396

Station KMSB-TV • Analog Channel 11, DTV Channel 25 • Tucson, AZ

Expected Change In Coverage: Licensed Operation

Licensed (solid): 480 kW ERP at 1123 m HAAT, Network: Fox
vs. Analog (dashed): 316 kW ERP at 507 m HAAT, Network: Fox

Market: Tucson, AZ



©2008 Hammett & Edison, Inc.

10 MI 0 10 20 30 40 50 60 70 100 80 60 40 20 0 KM 20

- Coverage gained after DTV transition
- (no symbol) No change in coverage
- ◆ Coverage lost but still served by same network
- ▲ Coverage lost and no other service by same network

Tucson, AZ

KMSB-TV

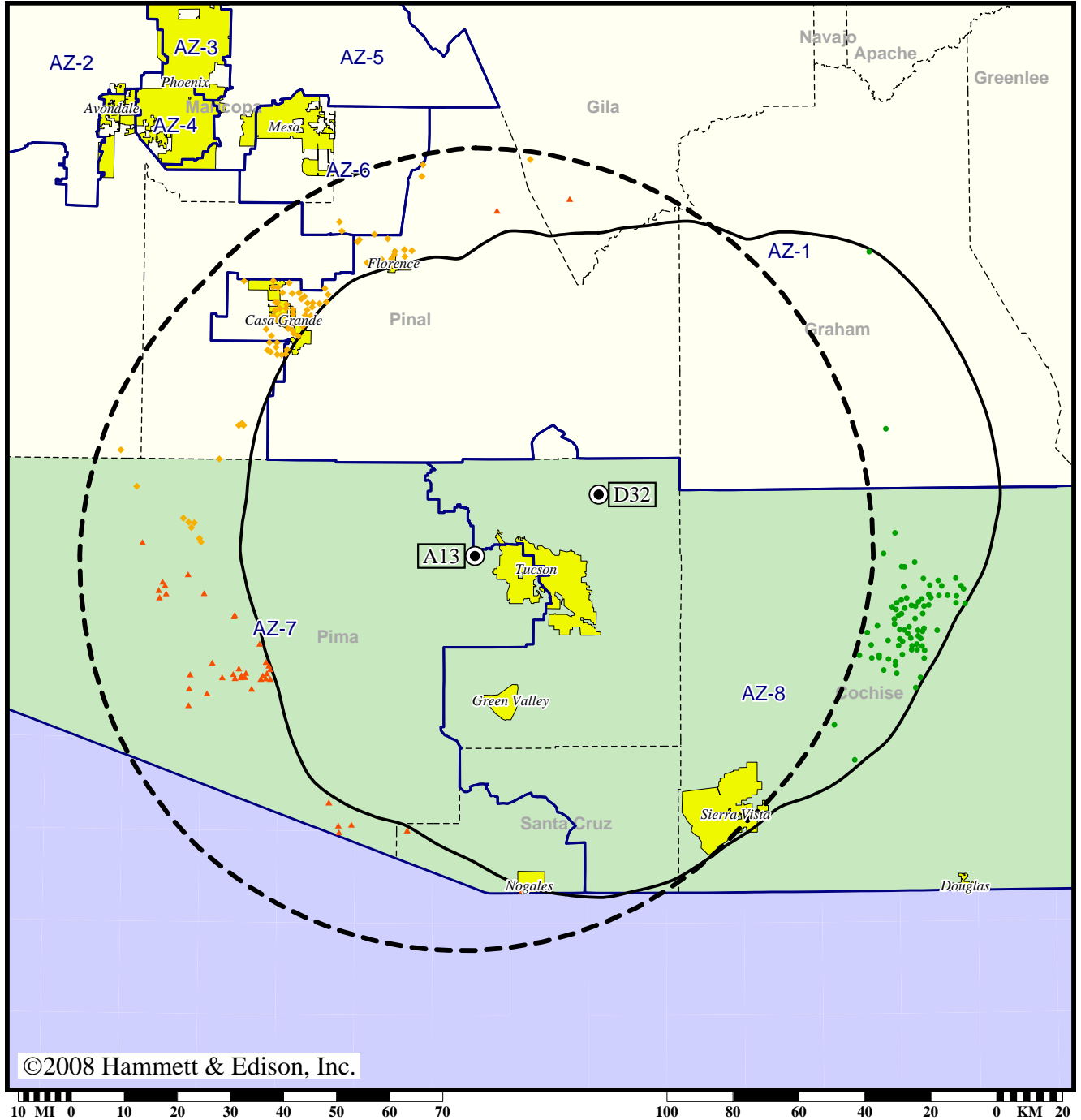
Population Receiving Analog Service	856,651
Population Receiving Digital Service.....	869,396
Analog Population Losing Service	85,128
Population Gaining Digital Service	97,873
Net Gain	12,745

Station KOLD-TV • Analog Channel 13, DTV Channel 32 • Tucson, AZ

Expected Change In Coverage: Licensed Operation

Licensed (solid): 108 kW ERP at 1123 m HAAT, Network: CBS
vs. Analog (dashed): 302 kW ERP at 622 m HAAT, Network: CBS

Market: Tucson, AZ



- Coverage gained after DTV transition
- (no symbol) No change in coverage
- ◆ Coverage lost but still served by same network
- ▲ Coverage lost and no other service by same network

Tucson, AZ

KOLD-TV

Population Receiving Analog Service	936,623
Population Receiving Digital Service.....	790,429

The following statistics pertain only to the area outside the analog service contour:

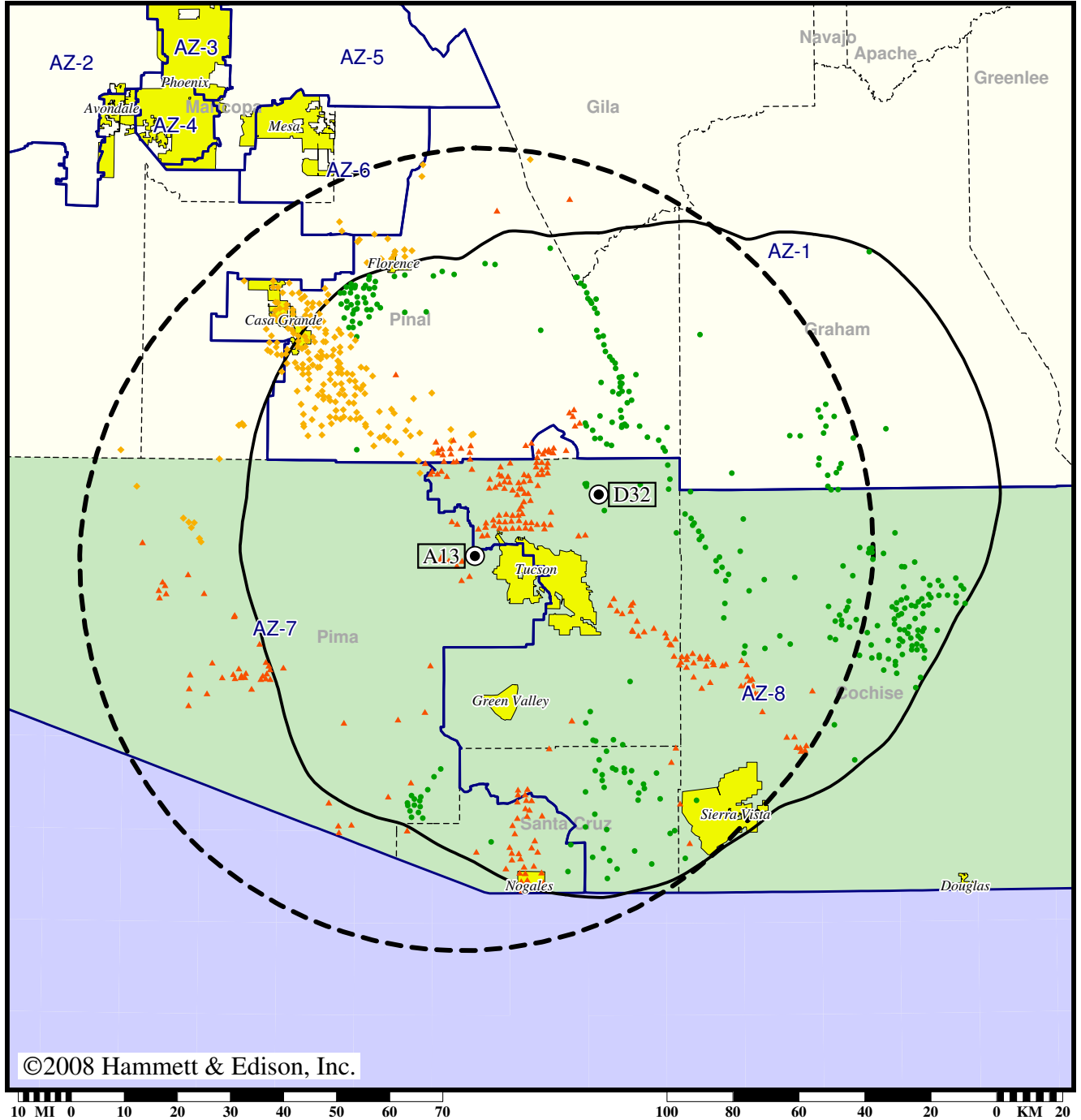
Analog Population Losing Service	44,932
Population Gaining Digital Service	1,344
Net Gain	-43,588

Station KOLD-TV • Analog Channel 13, DTV Channel 32 • Tucson, AZ

Expected Change In Coverage: Licensed Operation

Licensed (solid): 108 kW ERP at 1123 m HAAT, Network: CBS
 vs. Analog (dashed): 302 kW ERP at 622 m HAAT, Network: CBS

Market: Tucson, AZ



- Coverage gained after DTV transition
- (no symbol) No change in coverage
- ◆ Coverage lost but still served by same network
- ▲ Coverage lost and no other service by same network

Tucson, AZ

KOLD-TV

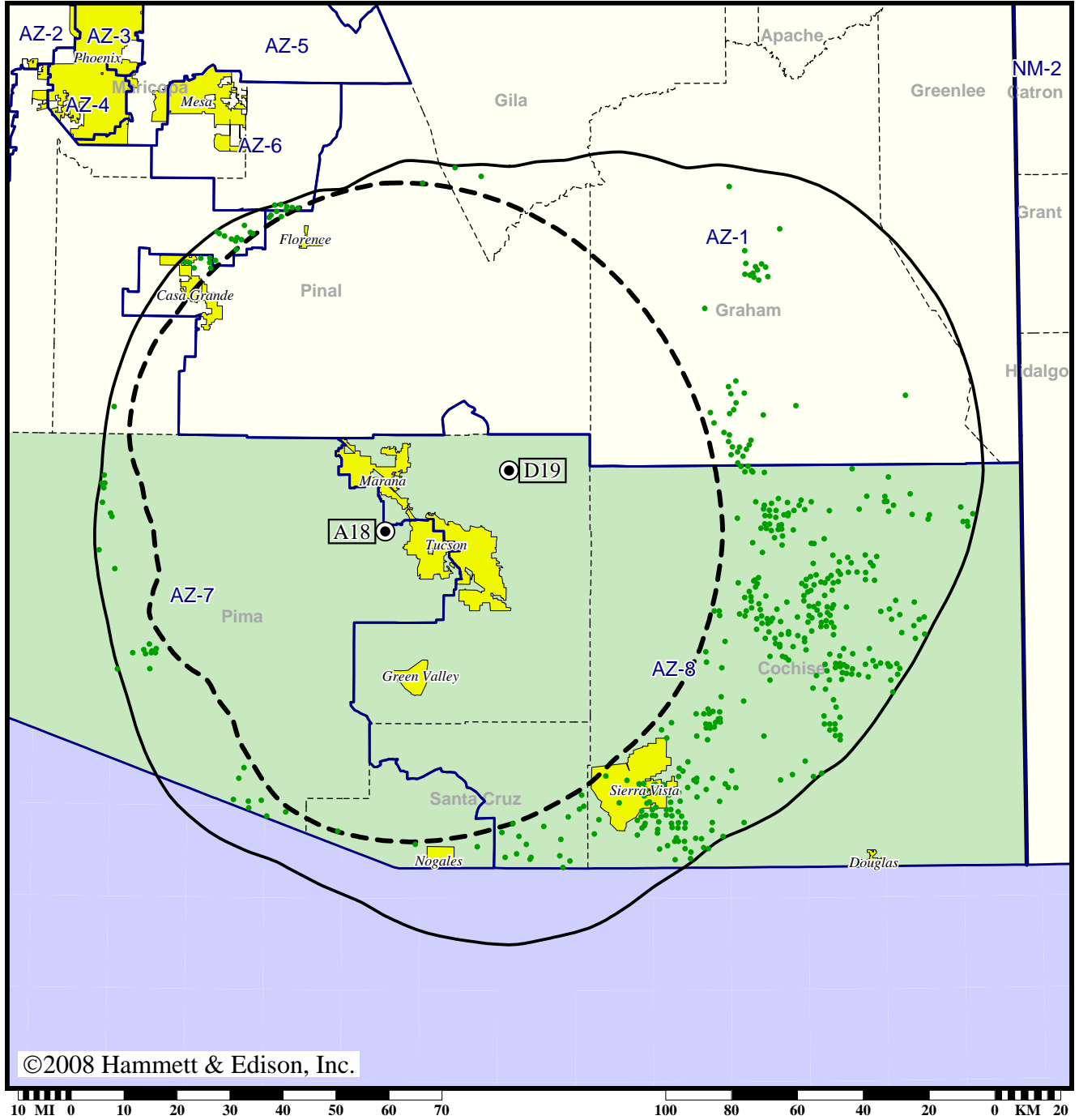
Population Receiving Analog Service	936,623
Population Receiving Digital Service.....	790,429
Analog Population Losing Service	176,043
Population Gaining Digital Service	29,849
Net Gain	-146,194

Station KTTU-TV • Analog Channel 18, DTV Channel 19 • Tucson, AZ

Expected Change In Coverage: Licensed Operation

Licensed (solid): 480 kW ERP at 1123 m HAAT
vs. Analog (dashed): 2510 kW ERP at 600 m HAAT

Market: Tucson, AZ



©2008 Hammett & Edison, Inc.

- Coverage gained after DTV transition
- (no symbol) No change in coverage

Tucson, AZ

KTTU-TV

Population Receiving Analog Service	897,725
Population Receiving Digital Service.....	899,551

The following statistics pertain only to the area outside the analog service contour:

Analog Population Losing Service	0
Population Gaining Digital Service	61,836
Net Gain	61,836

Tucson, AZ

KTTU-TV

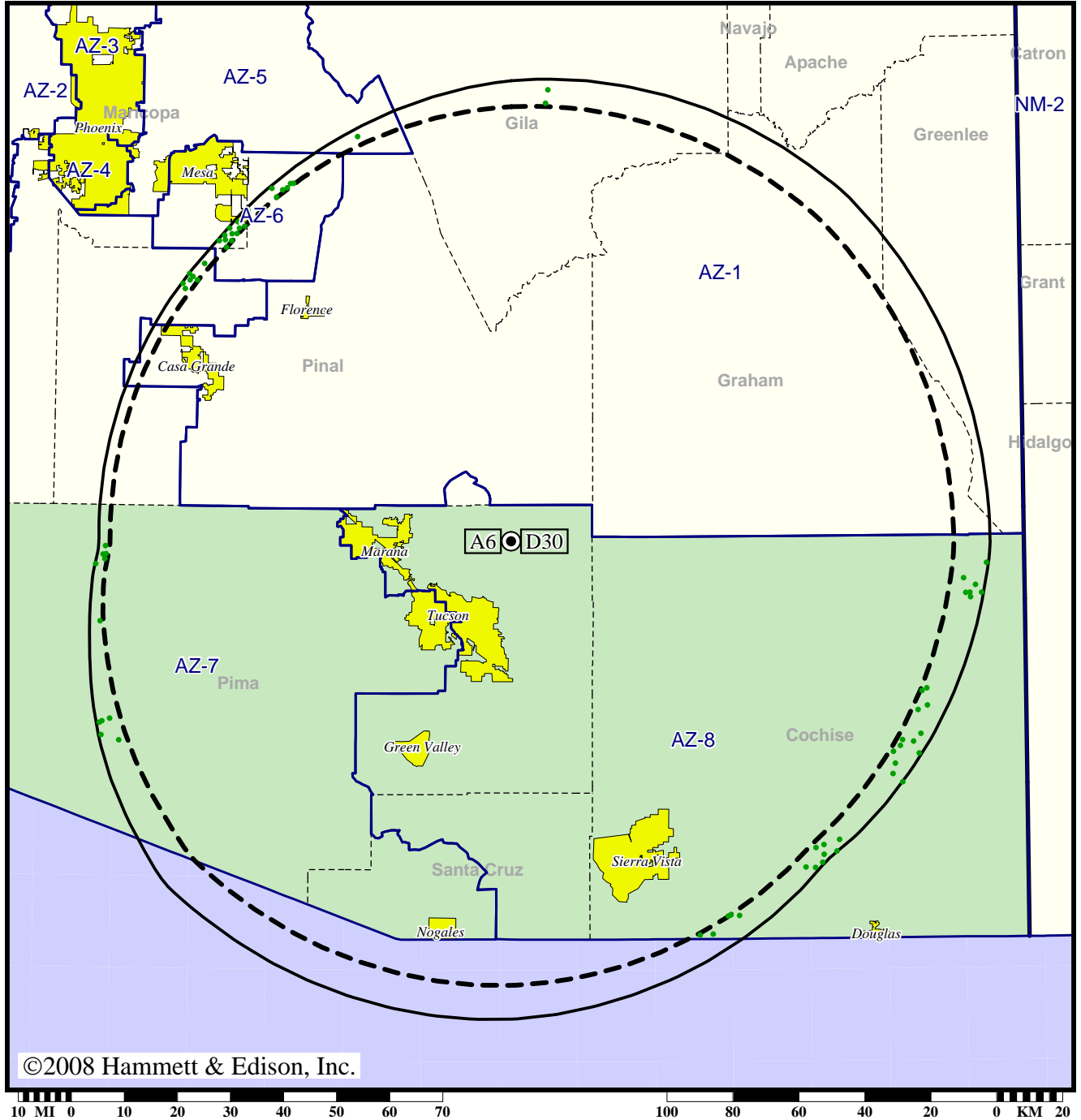
Population Receiving Analog Service	897,725
Population Receiving Digital Service.....	899,551
Analog Population Losing Service	95,616
Population Gaining Digital Service	97,442
Net Gain	1,826

Station KUAT-TV • Analog Channel 6, DTV Channel 30 • Tucson, AZ

Expected Change In Coverage: Licensed Operation

Licensed (solid): 668 kW ERP at 1092 m HAAT, Network: PBS
vs. Analog (dashed): 33.9 kW ERP at 1101 m HAAT, Network: PBS

Market: Tucson, AZ



- Coverage gained after DTV transition
- (no symbol) No change in coverage

Tucson, AZ

KUAT-TV

Population Receiving Analog Service 1,000,203
Population Receiving Digital Service..... 943,290

The following statistics pertain only to the area outside
the analog service contour:

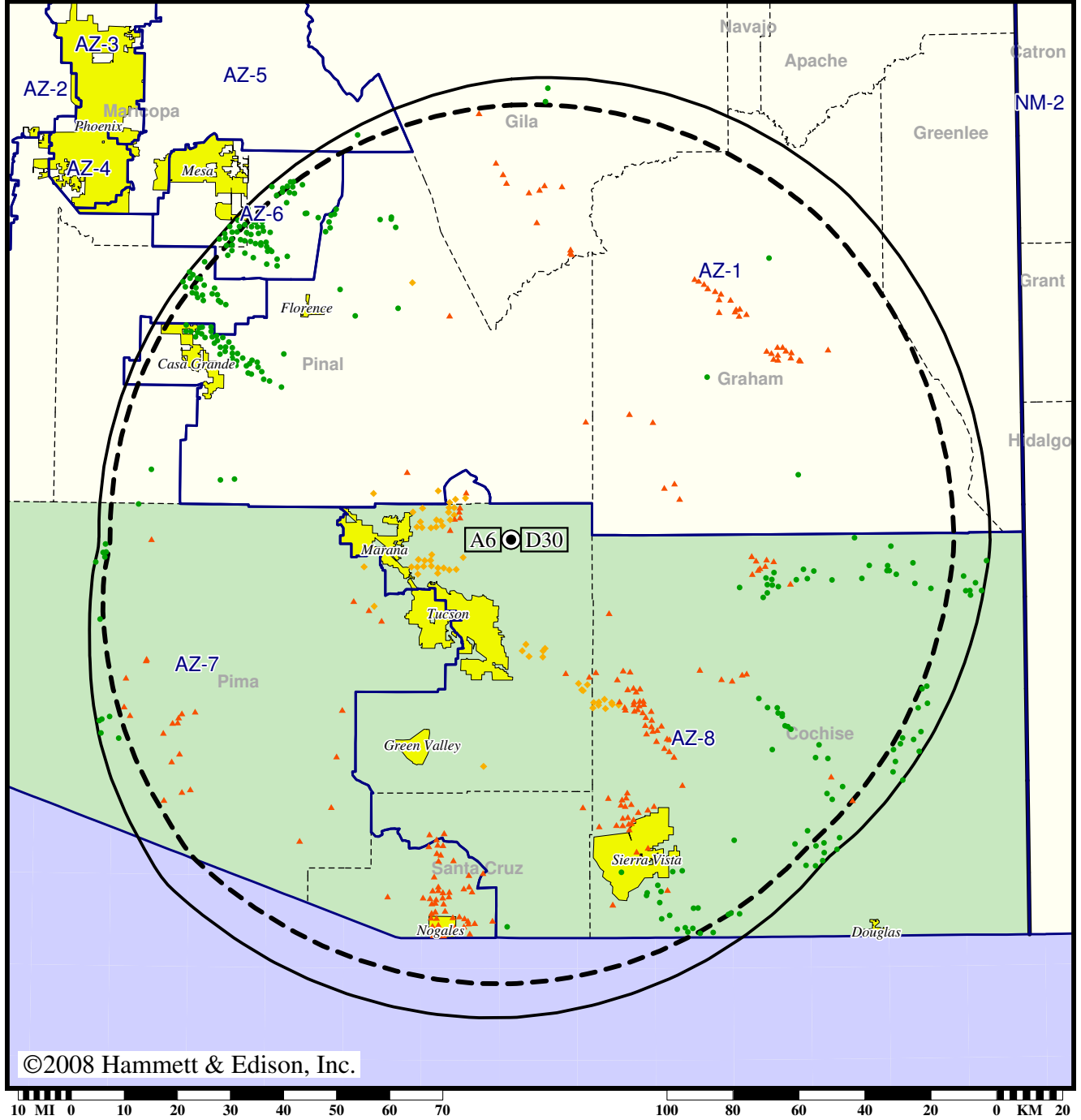
Analog Population Losing Service 0
Population Gaining Digital Service 9,120
Net Gain 9,120

Station KUAT-TV • Analog Channel 6, DTV Channel 30 • Tucson, AZ

Expected Change In Coverage: Licensed Operation

Licensed (solid): 668 kW ERP at 1092 m HAAT, Network: PBS
vs. Analog (dashed): 33.9 kW ERP at 1101 m HAAT, Network: PBS

Market: Tucson, AZ



©2008 Hammett & Edison, Inc.

- Coverage gained after DTV transition
- (no symbol) No change in coverage
- ◆ Coverage lost but still served by same network
- ▲ Coverage lost and no other service by same network

Tucson, AZ

KUAT-TV

Population Receiving Analog Service	1,000,203
Population Receiving Digital Service.....	943,290
Analog Population Losing Service	91,798
Population Gaining Digital Service	34,885
Net Gain	-56,913

Tucson, AZ

KVOA

Population Receiving Analog Service 1,022,421
Population Receiving Digital Service..... 865,767

The following statistics pertain only to the area outside
the analog service contour:

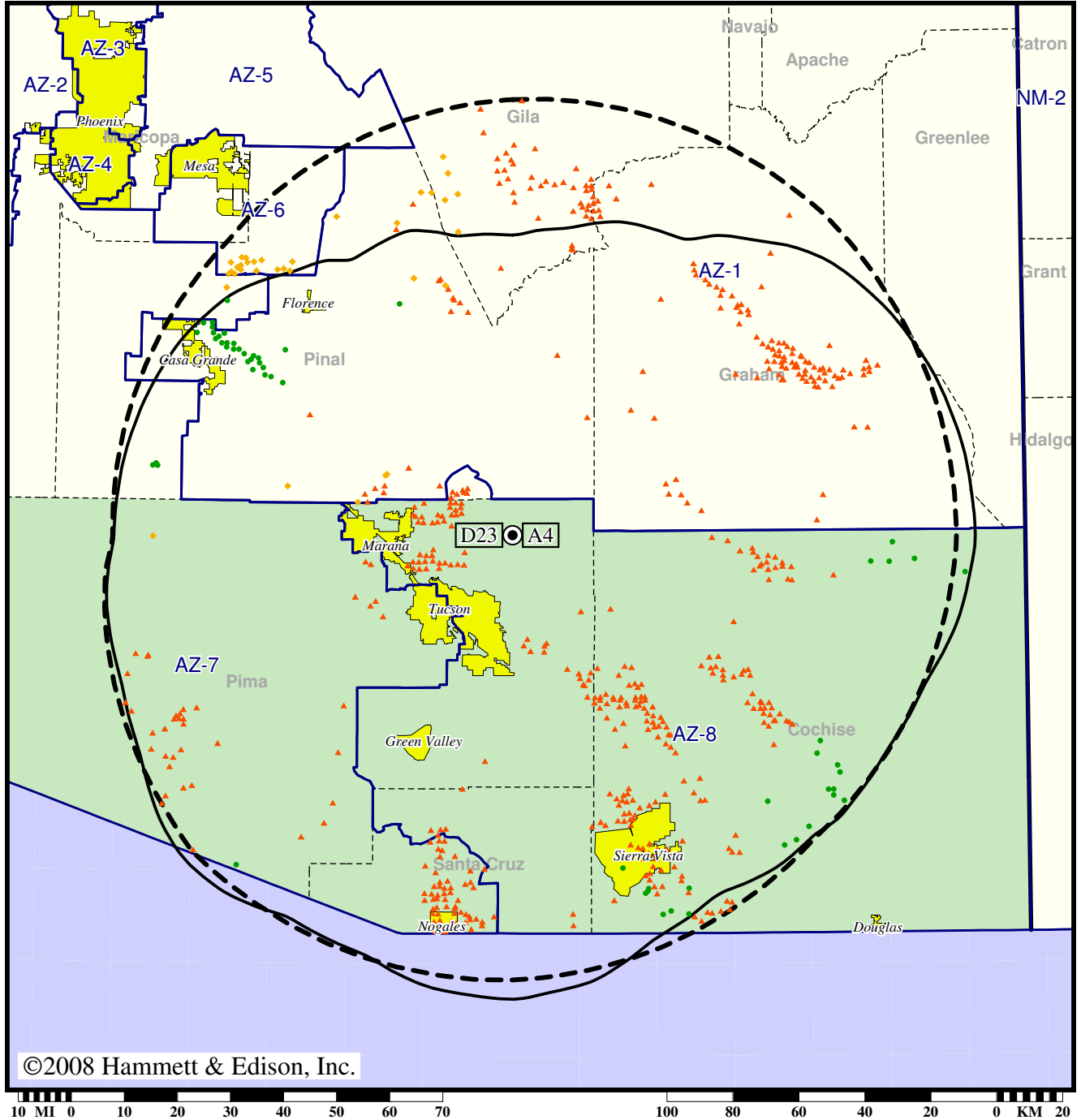
Analog Population Losing Service 11,021
Population Gaining Digital Service 13
Net Gain -11,008

TV Station KVOA • Analog Channel 4, DTV Channel 23 • Tucson, AZ

Expected Change In Coverage: Post-Transition Appendix B Facility

Appendix B (solid): 405 kW ERP at 1123 m HAAT, Network: NBC
 vs. Analog (dashed): 35.0 kW ERP at 1092 m HAAT, Network: NBC

Market: Tucson, AZ



©2008 Hammett & Edison, Inc.

- Coverage gained after DTV transition
- (no symbol) No change in coverage
- ◆ Coverage lost but still served by same network
- ▲ Coverage lost and no other service by same network

Tucson, AZ

KVOA

Population Receiving Analog Service	1,022,421
Population Receiving Digital Service.....	865,767
Analog Population Losing Service	163,781
Population Gaining Digital Service	7,127
Net Gain	-156,654