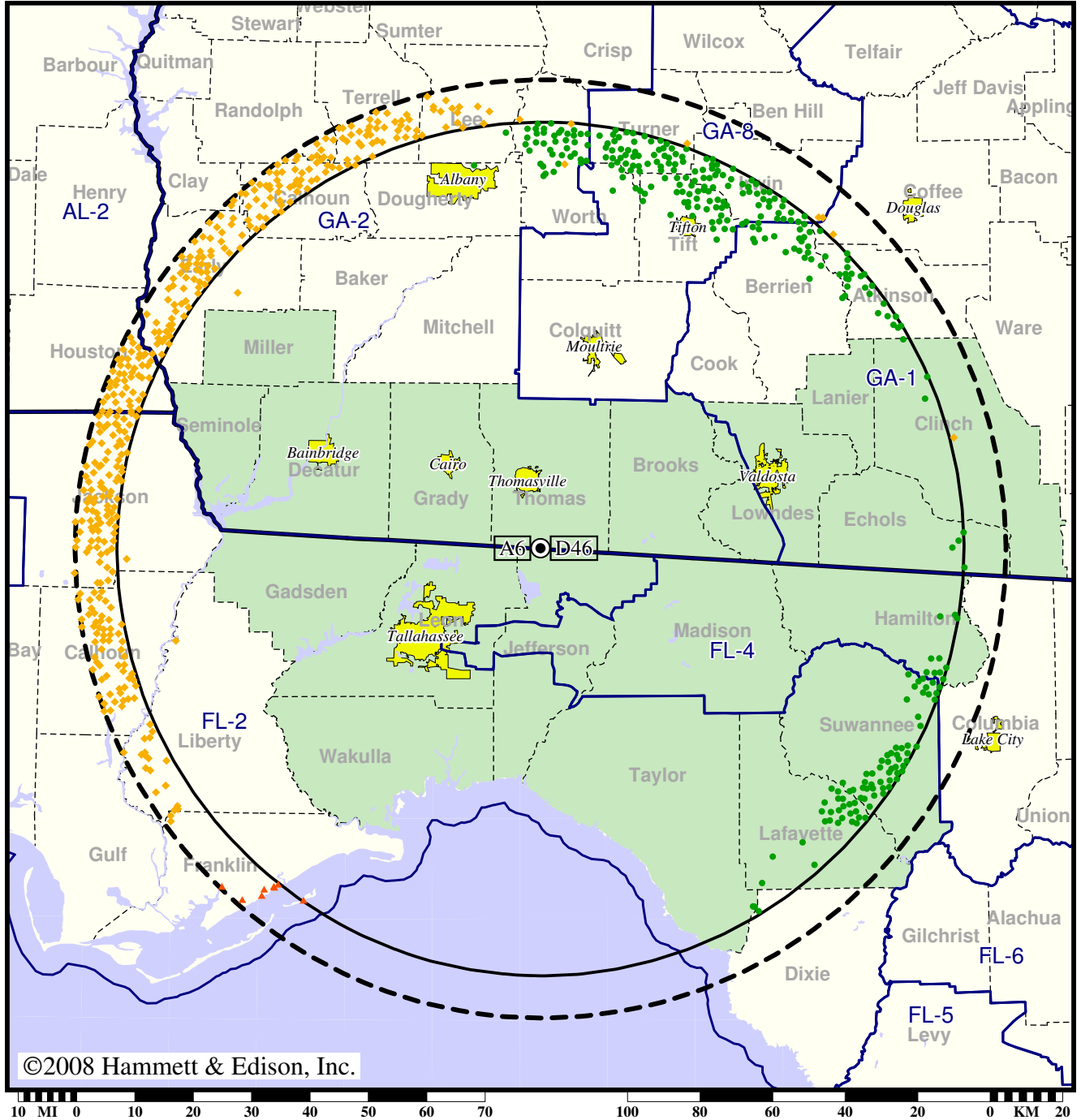


TV Station WCTV • Analog Channel 6, DTV Channel 46 • Thomasville, GA

Expected Change In Coverage: Licensed Operation

Licensed (solid): 1000 kW ERP at 566 m HAAT, Network: CBS
vs. Analog (dashed): 97.7 kW ERP at 619 m HAAT, Network: CBS

Market: Tallahassee, FL-Thomasville, GA



- Coverage gained after DTV transition
- (no symbol) No change in coverage
- ◆ Coverage lost but still served by same network
- ▲ Coverage lost and no other service by same network

Tallahassee, FL-Thomasville, GA

WCTV

Population Receiving Analog Service	977,643
Population Receiving Digital Service.....	956,834

The following statistics pertain only to the area outside the analog service contour:

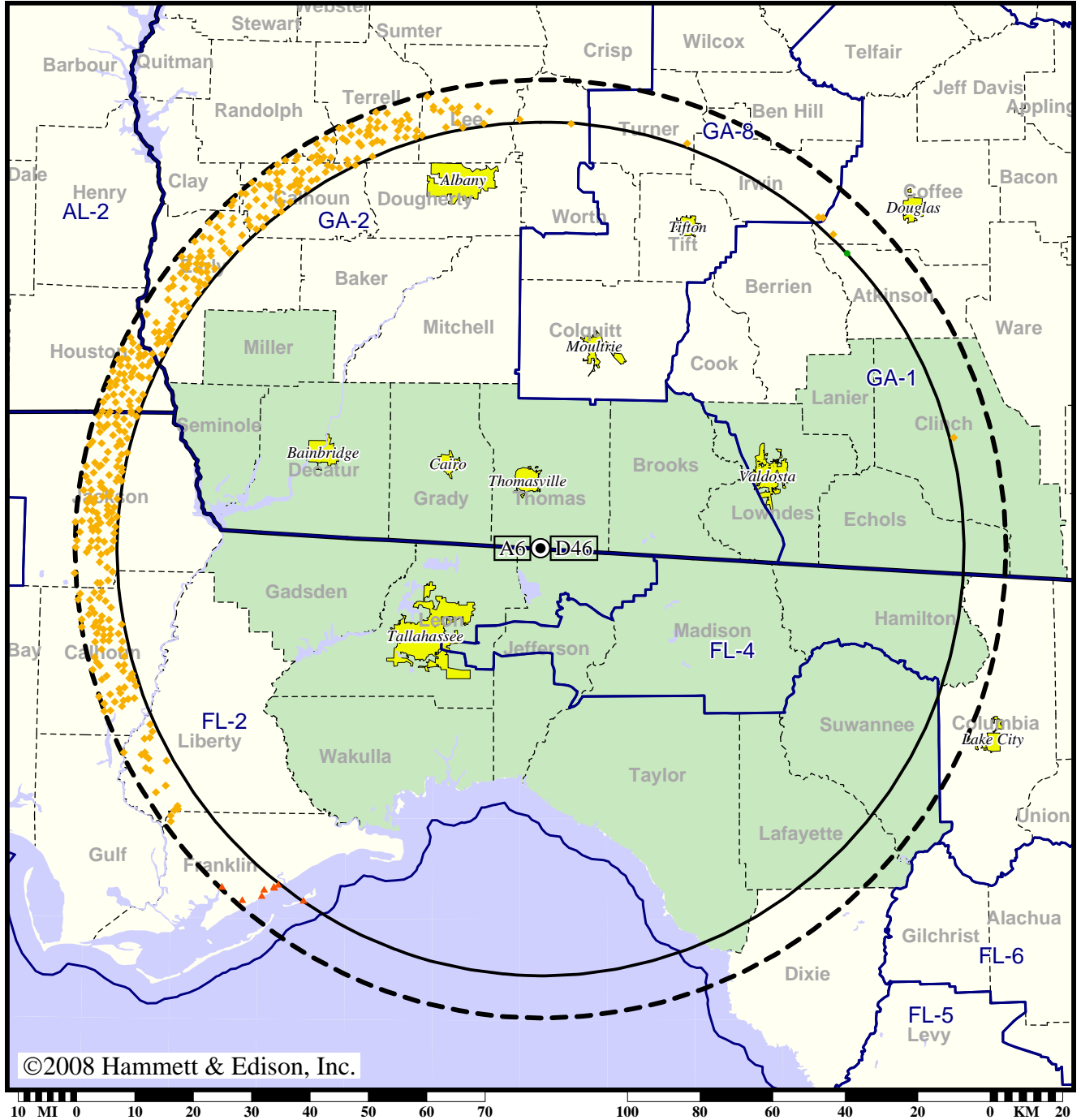
Analog Population Losing Service	36,405
Population Gaining Digital Service	0
Net Gain	-36,405

TV Station WCTV • Analog Channel 6, DTV Channel 46 • Thomasville, GA

Expected Change In Coverage: Licensed Operation

Licensed (solid): 1000 kW ERP at 566 m HAAT, Network: CBS
 vs. Analog (dashed): 97.7 kW ERP at 619 m HAAT, Network: CBS

Market: Tallahassee, FL-Thomasville, GA



- Coverage gained after DTV transition
- (no symbol) No change in coverage
- ◆ Coverage lost but still served by same network
- ▲ Coverage lost and no other service by same network

Tallahassee, FL-Thomasville, GA

WCTV

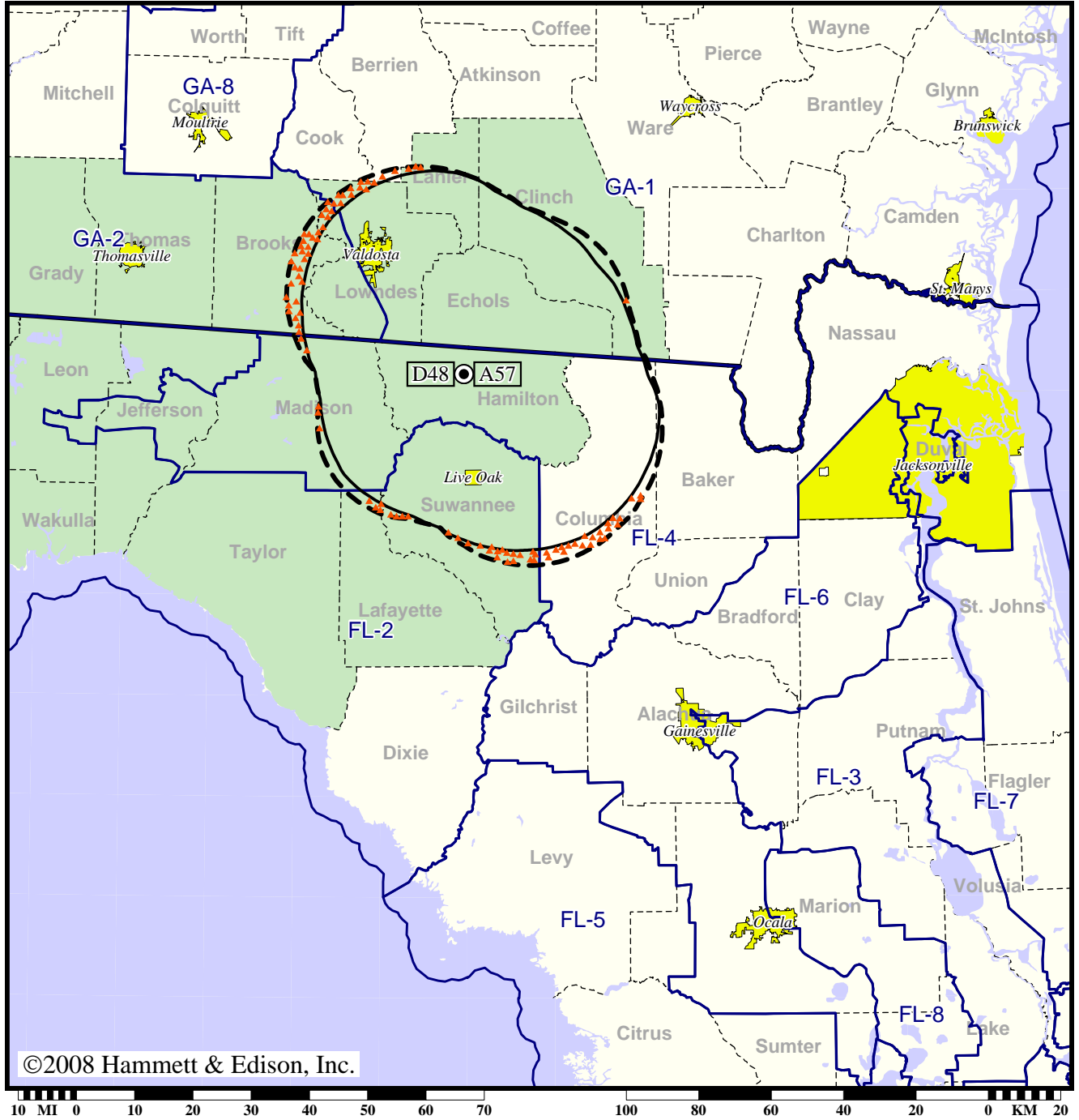
Population Receiving Analog Service	977,643
Population Receiving Digital Service.....	956,834
Analog Population Losing Service	36,673
Population Gaining Digital Service	15,864
Net Gain	-20,809

TV Station WFXU • Analog Channel 57, DTV Channel 48 • Live Oak, FL

Expected Change In Coverage: Licensed Operation

**Licensed (solid): 22.0 kW ERP at 134 m HAAT
vs. Analog (dashed): 2510 kW ERP at 135 m HAAT**

Market: Tallahassee, FL-Thomasville, GA



- (no symbol) No change in coverage
- ▲ Coverage lost after DTV transition

Tallahassee, FL-Thomasville, GA

WFXU

Population Receiving Analog Service	195,184
Population Receiving Digital Service.....	181,565

The following statistics pertain only to the area outside the analog service contour:

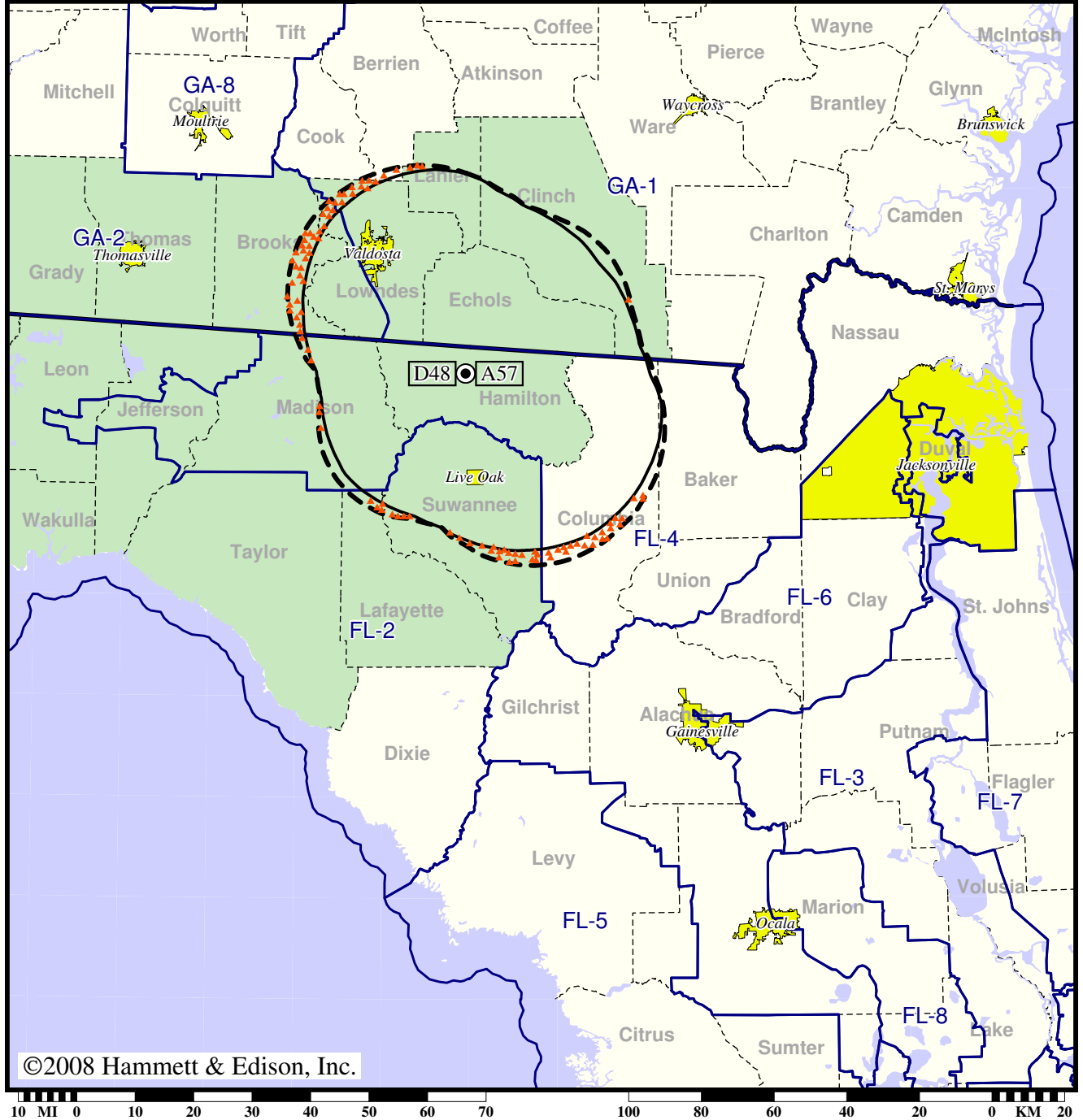
Analog Population Losing Service	13,434
Population Gaining Digital Service	0
Net Gain	-13,434

TV Station WFXU • Analog Channel 57, DTV Channel 48 • Live Oak, FL

Expected Change In Coverage: Licensed Operation

Licensed (solid): 22.0 kW ERP at 134 m HAAT
vs. Analog (dashed): 2510 kW ERP at 135 m HAAT

Market: Tallahassee, FL-Thomasville, GA



- (no symbol) No change in coverage
- ▲ Coverage lost after DTV transition

Tallahassee, FL-Thomasville, GA

WFXU

Population Receiving Analog Service	195,184
Population Receiving Digital Service.....	181,565
Analog Population Losing Service	13,619
Population Gaining Digital Service	0
Net Gain	-13,619