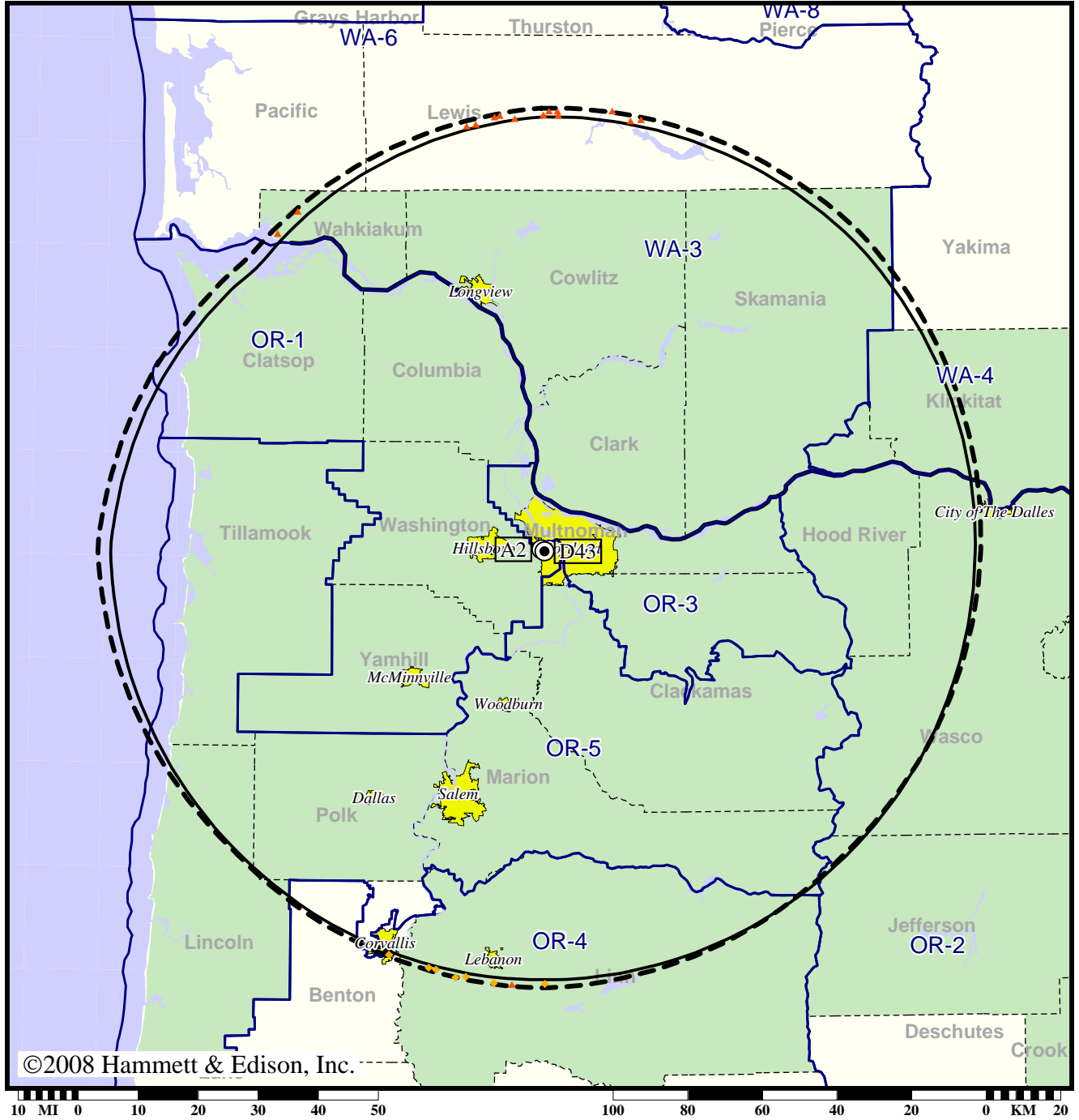


TV Station KATU • Analog Channel 2, DTV Channel 43 • Portland, OR

Expected Change In Coverage: Licensed Operation

Licensed (solid): 1000 kW ERP at 524 m HAAT, Network: ABC
 vs. Analog (dashed): 100 kW ERP at 475 m HAAT, Network: ABC

Market: Portland, OR



- (no symbol) No change in coverage
- ◆ Coverage lost but still served by same network
- ▲ Coverage lost and no other service by same network

Portland, OR

KATU

Population Receiving Analog Service2,461,927
Population Receiving Digital Service.....2,434,935

The following statistics pertain only to the area outside
the analog service contour:

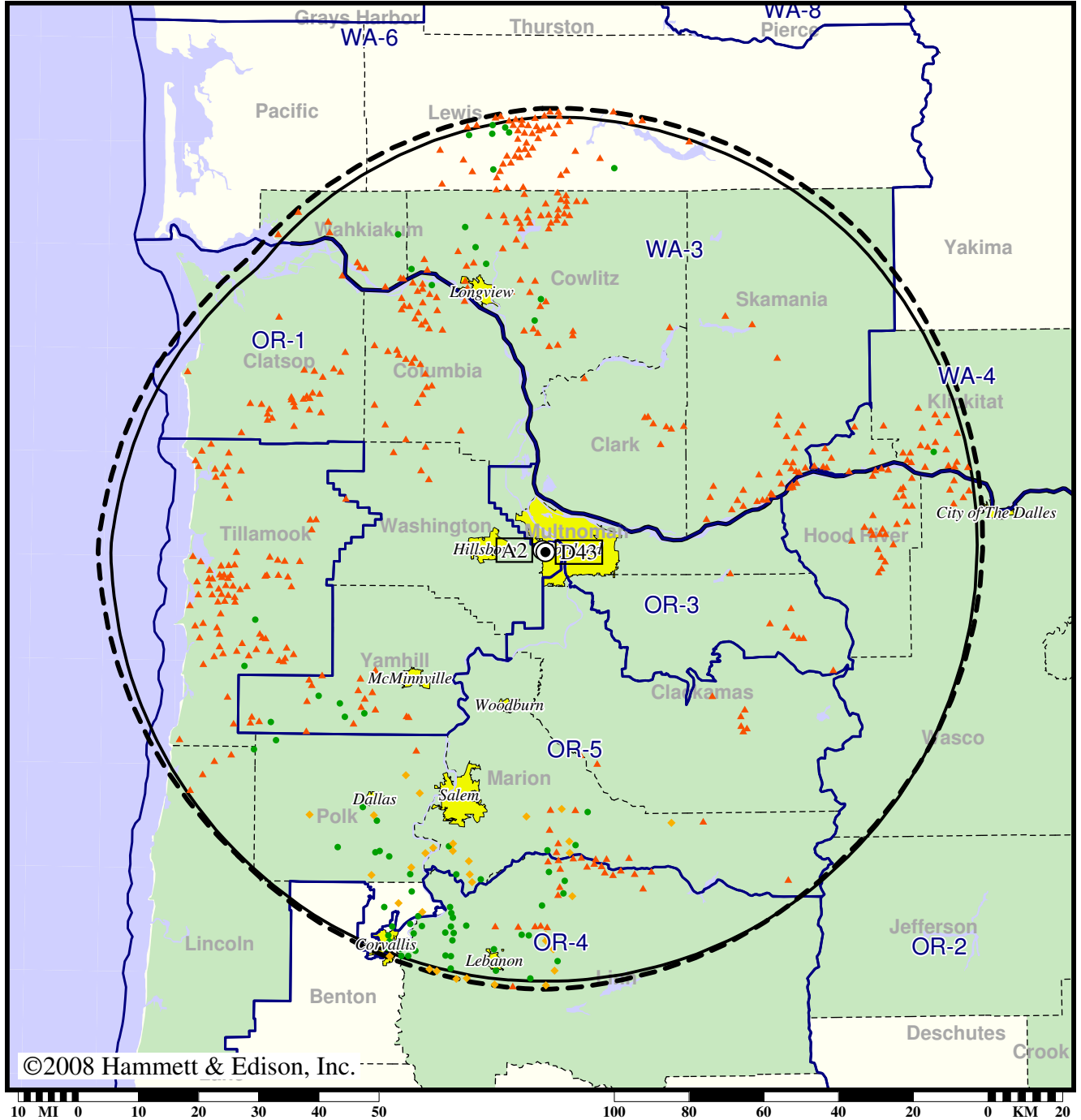
Analog Population Losing Service6,493
Population Gaining Digital Service0
Net Gain-6,493

TV Station KATU • Analog Channel 2, DTV Channel 43 • Portland, OR

Expected Change In Coverage: Licensed Operation

Licensed (solid): 1000 kW ERP at 524 m HAAT, Network: ABC
vs. Analog (dashed): 100 kW ERP at 475 m HAAT, Network: ABC

Market: Portland, OR



©2008 Hammett & Edison, Inc.

- Coverage gained after DTV transition
- (no symbol) No change in coverage
- ◆ Coverage lost but still served by same network
- ▲ Coverage lost and no other service by same network

Portland, OR

KATU

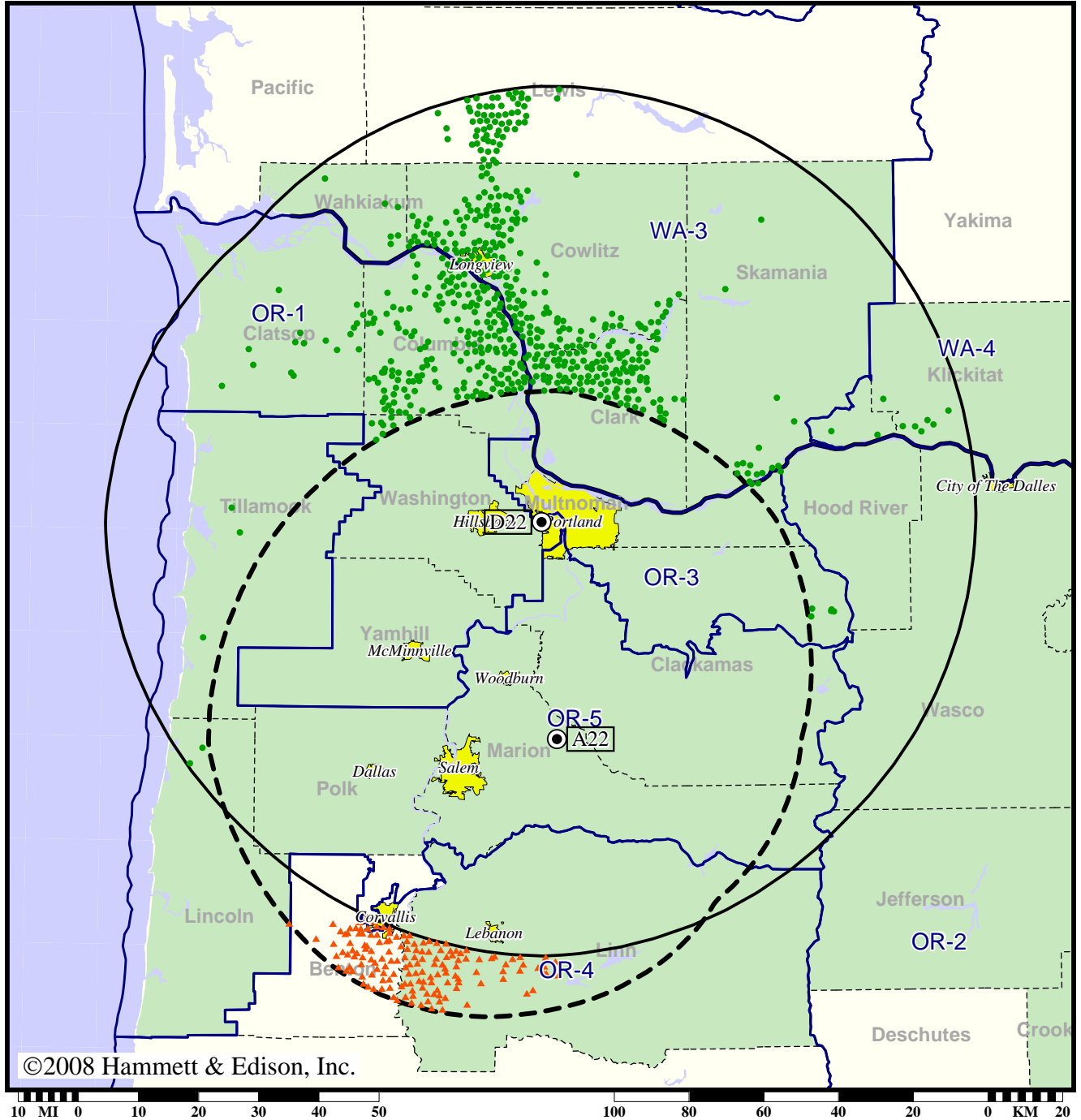
Population Receiving Analog Service	2,461,927
Population Receiving Digital Service.....	2,434,935
Analog Population Losing Service	53,397
Population Gaining Digital Service	26,405
Net Gain	-26,992

TV Station KPXG • Analog Channel 22, DTV Channel 22 • Salem, OR

Expected Change In Coverage: Granted Construction Permit

CP (solid): 745 kW ERP at 510 m HAAT
vs. Analog (dashed): 1700 kW ERP at 363 m HAAT

Market: Portland, OR



- Coverage gained after DTV transition
- (no symbol) No change in coverage
- ▲ Coverage lost after DTV transition

Portland, OR

KPXG

Population Receiving Analog Service	1,684,441
Population Receiving Digital Service.....	2,448,252

The following statistics pertain only to the area outside the analog service contour:

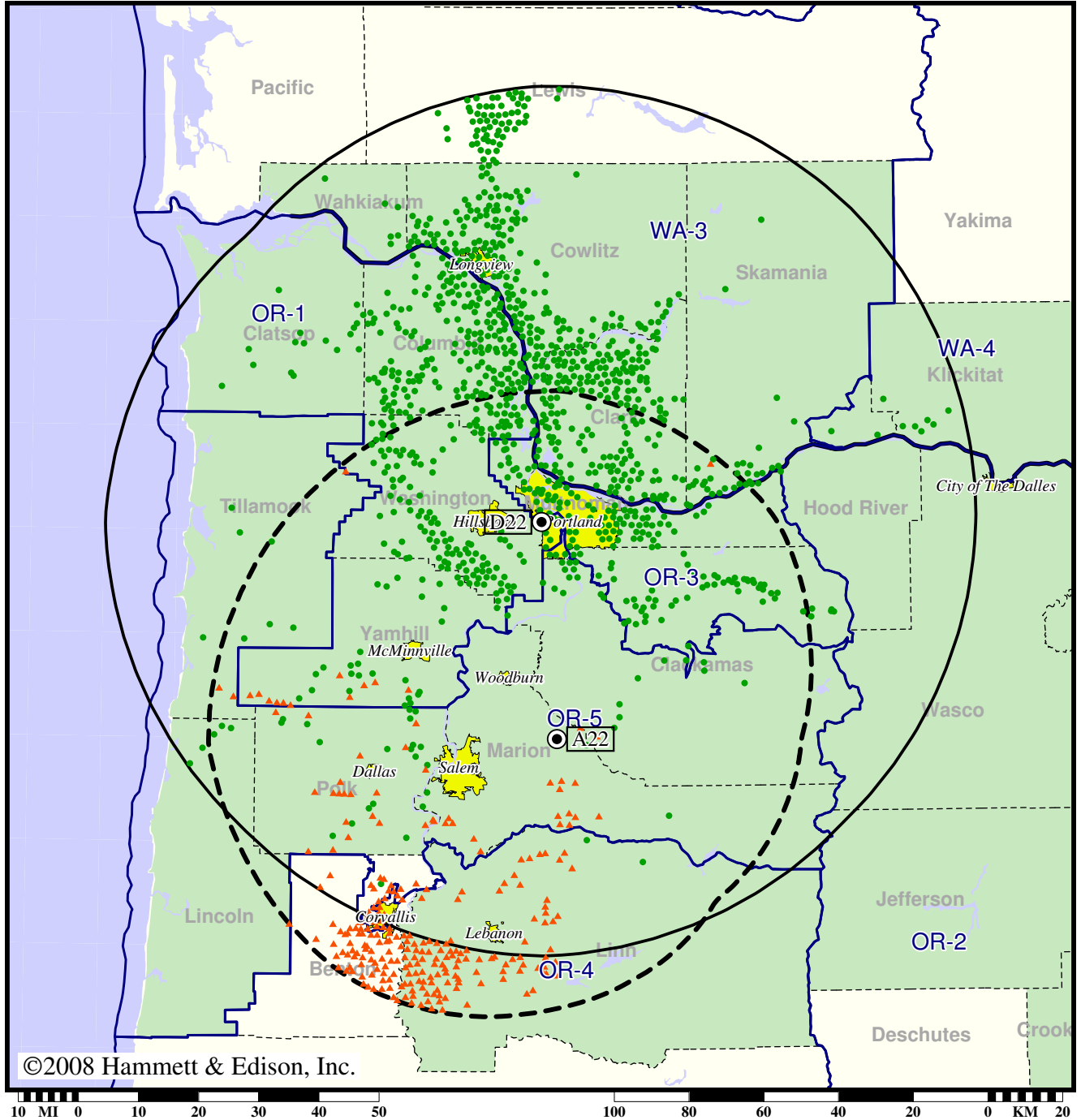
Analog Population Losing Service	22,222
Population Gaining Digital Service	146,905
Net Gain	124,683

TV Station KPXG • Analog Channel 22, DTV Channel 22 • Salem, OR

Expected Change In Coverage: Granted Construction Permit

CP (solid): 745 kW ERP at 510 m HAAT
vs. Analog (dashed): 1700 kW ERP at 363 m HAAT

Market: Portland, OR



©2008 Hammett & Edison, Inc.

10 MI 0 10 20 30 40 50 100 80 60 40 20 0 KM 20

- Coverage gained after DTV transition
- (no symbol) No change in coverage
- ▲ Coverage lost after DTV transition

Portland, OR

KPXG

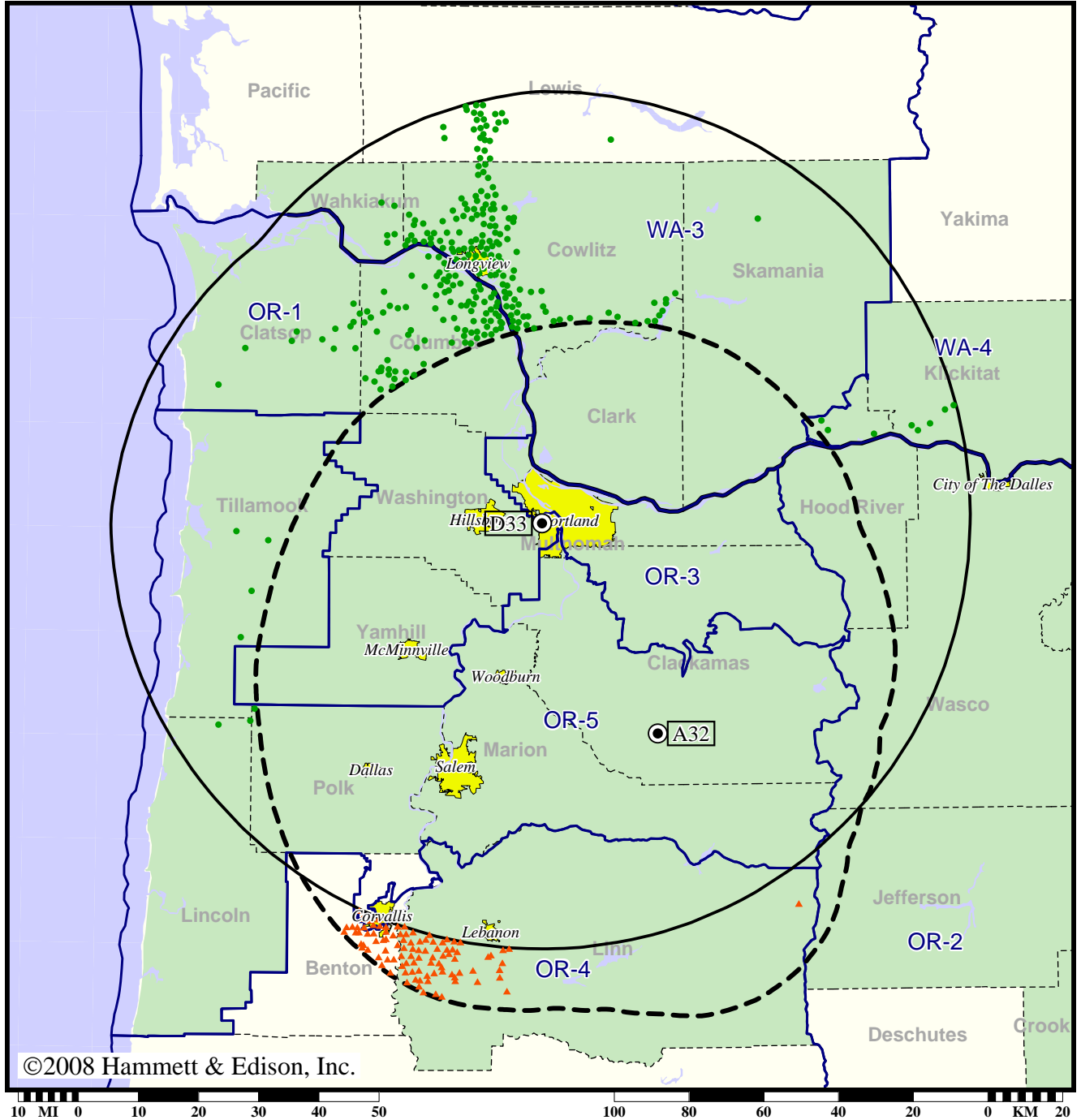
Population Receiving Analog Service	1,684,441
Population Receiving Digital Service.....	2,448,252
Analog Population Losing Service	54,720
Population Gaining Digital Service	818,531
Net Gain	763,811

Station KRCW-TV • Analog Channel 32, DTV Channel 33 • Salem, OR

Expected Change In Coverage: Licensed Operation

Licensed (solid): 750 kW ERP at 523 m HAAT
vs. Analog (dashed): 5000 kW ERP at 544 m HAAT

Market: Portland, OR



©2008 Hammett & Edison, Inc.

- Coverage gained after DTV transition
- (no symbol) No change in coverage
- ▲ Coverage lost after DTV transition

Portland, OR

KRCW-TV

Population Receiving Analog Service2,081,324
Population Receiving Digital Service.....2,434,487

The following statistics pertain only to the area outside
the analog service contour:

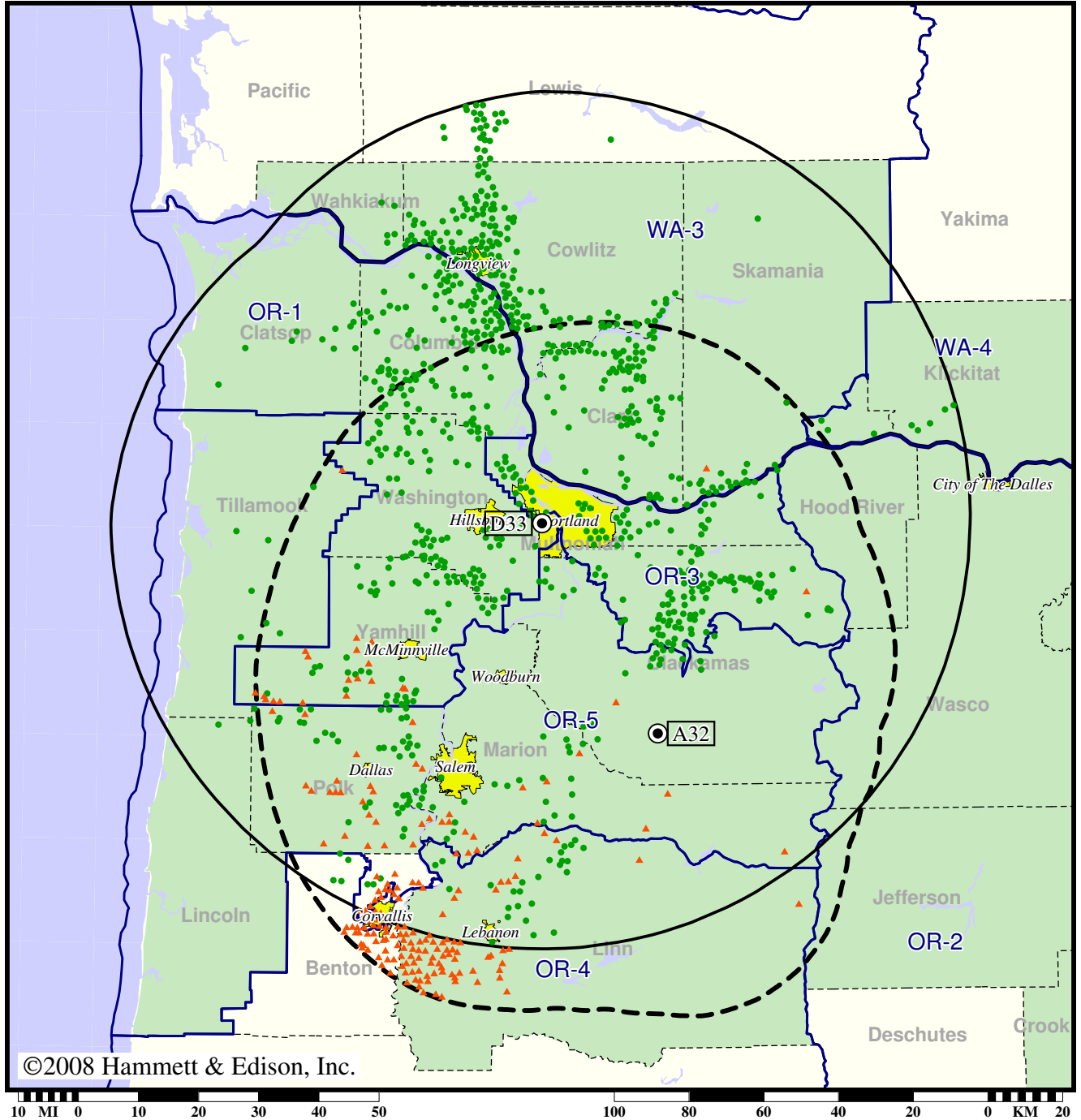
Analog Population Losing Service21,333
Population Gaining Digital Service89,049
Net Gain67,716

Station KRCW-TV • Analog Channel 32, DTV Channel 33 • Salem, OR

Expected Change In Coverage: Licensed Operation

Licensed (solid): 750 kW ERP at 523 m HAAT
vs. Analog (dashed): 5000 kW ERP at 544 m HAAT

Market: Portland, OR



- Coverage gained after DTV transition
- (no symbol) No change in coverage
- ▲ Coverage lost after DTV transition

Portland, OR

KRCW-TV

Population Receiving Analog Service	2,081,324
Population Receiving Digital Service.....	2,434,487
Analog Population Losing Service	45,909
Population Gaining Digital Service	399,072
Net Gain	353,163