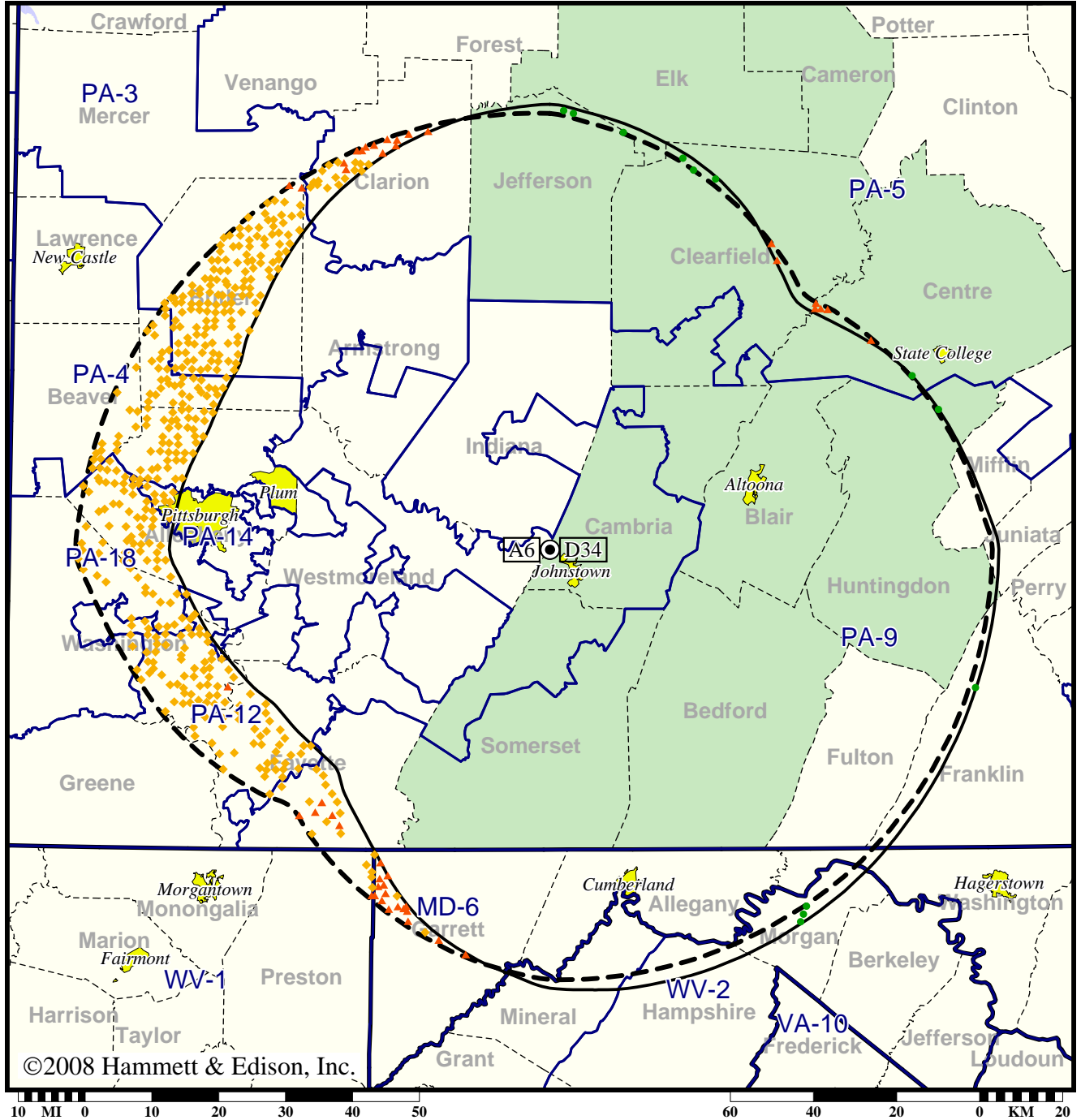


Station WJAC-TV • Analog Channel 6, DTV Channel 34 • Johnstown, PA

Expected Change In Coverage: Licensed Operation

Licensed (solid): 1000 kW ERP at 386 m HAAT, Network: NBC
vs. Analog (dashed): 70.8 kW ERP at 341 m HAAT, Network: NBC

Market: Johnstown-Altoona, PA



- Coverage gained after DTV transition
- (no symbol) No change in coverage
- ◆ Coverage lost but still served by same network
- ▲ Coverage lost and no other service by same network

Johnstown-Altoona, PA

WJAC-TV

Population Receiving Analog Service2,149,915
Population Receiving Digital Service..... 1,647,100

The following statistics pertain only to the area outside
the analog service contour:

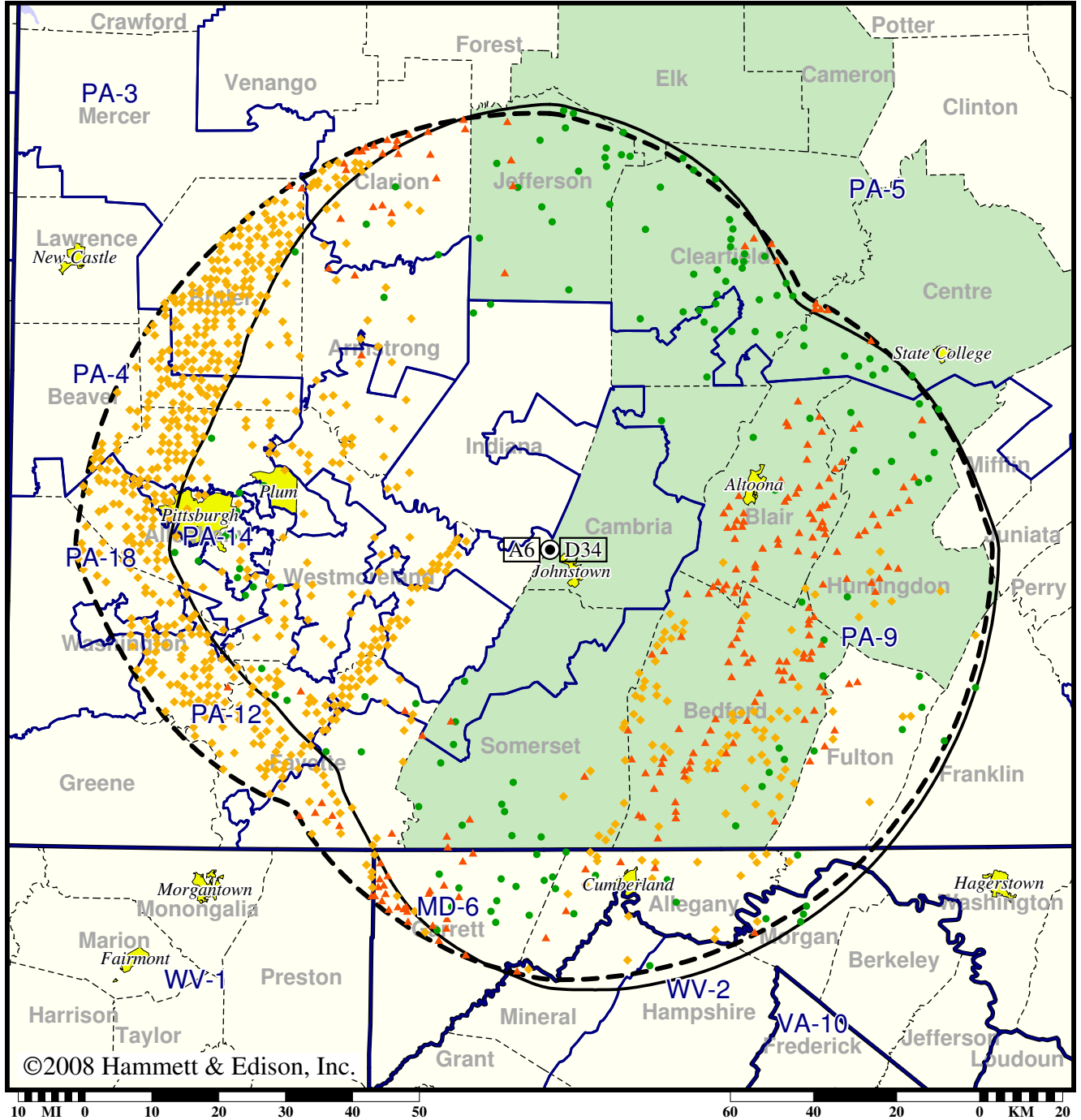
Analog Population Losing Service336,947
Population Gaining Digital Service 539
Net Gain-336,408

Station WJAC-TV • Analog Channel 6, DTV Channel 34 • Johnstown, PA

Expected Change In Coverage: Licensed Operation

Licensed (solid): 1000 kW ERP at 386 m HAAT, Network: NBC
vs. Analog (dashed): 70.8 kW ERP at 341 m HAAT, Network: NBC

Market: Johnstown-Altoona, PA



©2008 Hammett & Edison, Inc.

- Coverage gained after DTV transition
- (no symbol) No change in coverage
- ◆ Coverage lost but still served by same network
- ▲ Coverage lost and no other service by same network

Johnstown-Altoona, PA

WJAC-TV

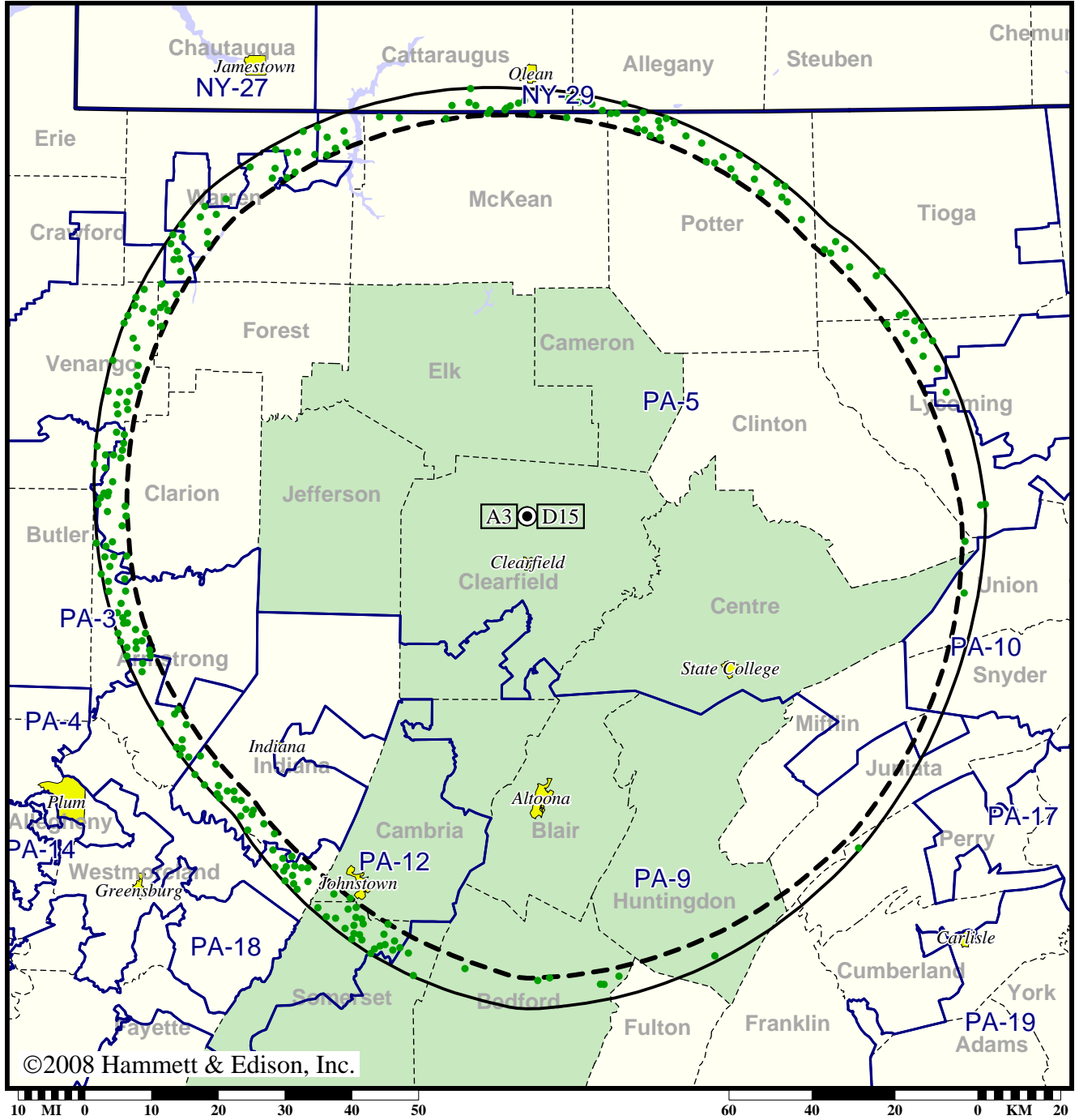
Population Receiving Analog Service	2,149,915
Population Receiving Digital Service.....	1,647,100
Analog Population Losing Service	569,619
Population Gaining Digital Service	66,804
Net Gain	-502,815

Station WPSU-TV • Analog Channel 3, DTV Channel 15 • Clearfield, PA

Expected Change In Coverage: Post-Transition Appendix B Facility

Appendix B (solid): 810 kW ERP at 413 m HAAT, Network: PBS
vs. Analog (dashed): 42.4 kW ERP at 395 m HAAT, Network: PBS

Market: Johnstown-Altoona, PA



- Coverage gained after DTV transition
- (no symbol) No change in coverage

Johnstown-Altoona, PA

WPSU-TV

Population Receiving Analog Service 553,191
Population Receiving Digital Service..... 700,069

The following statistics pertain only to the area outside
the analog service contour:

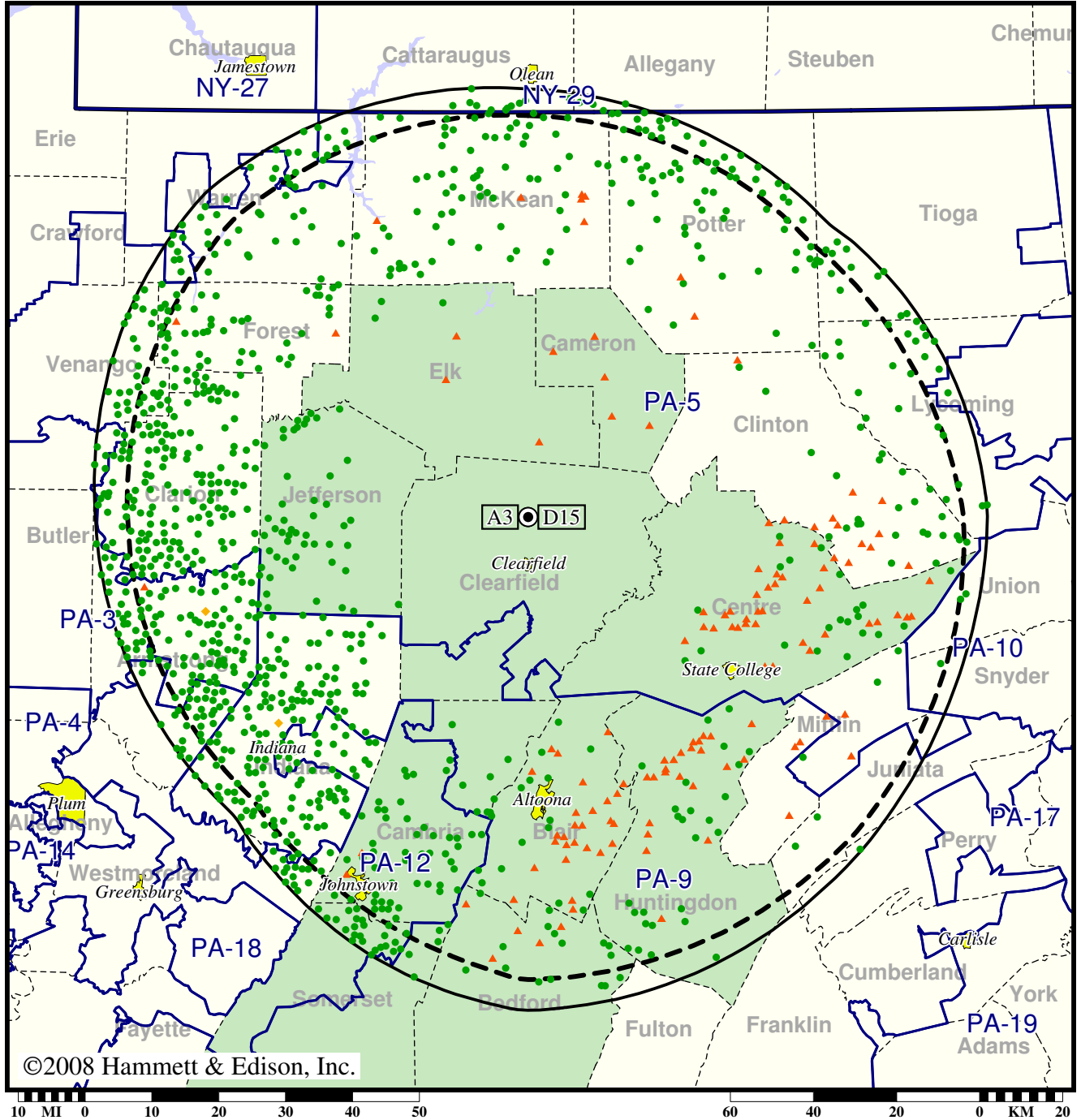
Analog Population Losing Service 0
Population Gaining Digital Service 38,860
Net Gain 38,860

Station WPSU-TV • Analog Channel 3, DTV Channel 15 • Clearfield, PA

Expected Change In Coverage: Post-Transition Appendix B Facility

Appendix B (solid): 810 kW ERP at 413 m HAAT, Network: PBS
vs. Analog (dashed): 42.4 kW ERP at 395 m HAAT, Network: PBS

Market: Johnstown-Altoona, PA



- Coverage gained after DTV transition
- (no symbol) No change in coverage
- ◆ Coverage lost but still served by same network
- ▲ Coverage lost and no other service by same network

Johnstown-Altoona, PA

WPSU-TV

Population Receiving Analog Service	553,191
Population Receiving Digital Service.....	700,069
Analog Population Losing Service	25,142
Population Gaining Digital Service	172,020
Net Gain	146,878