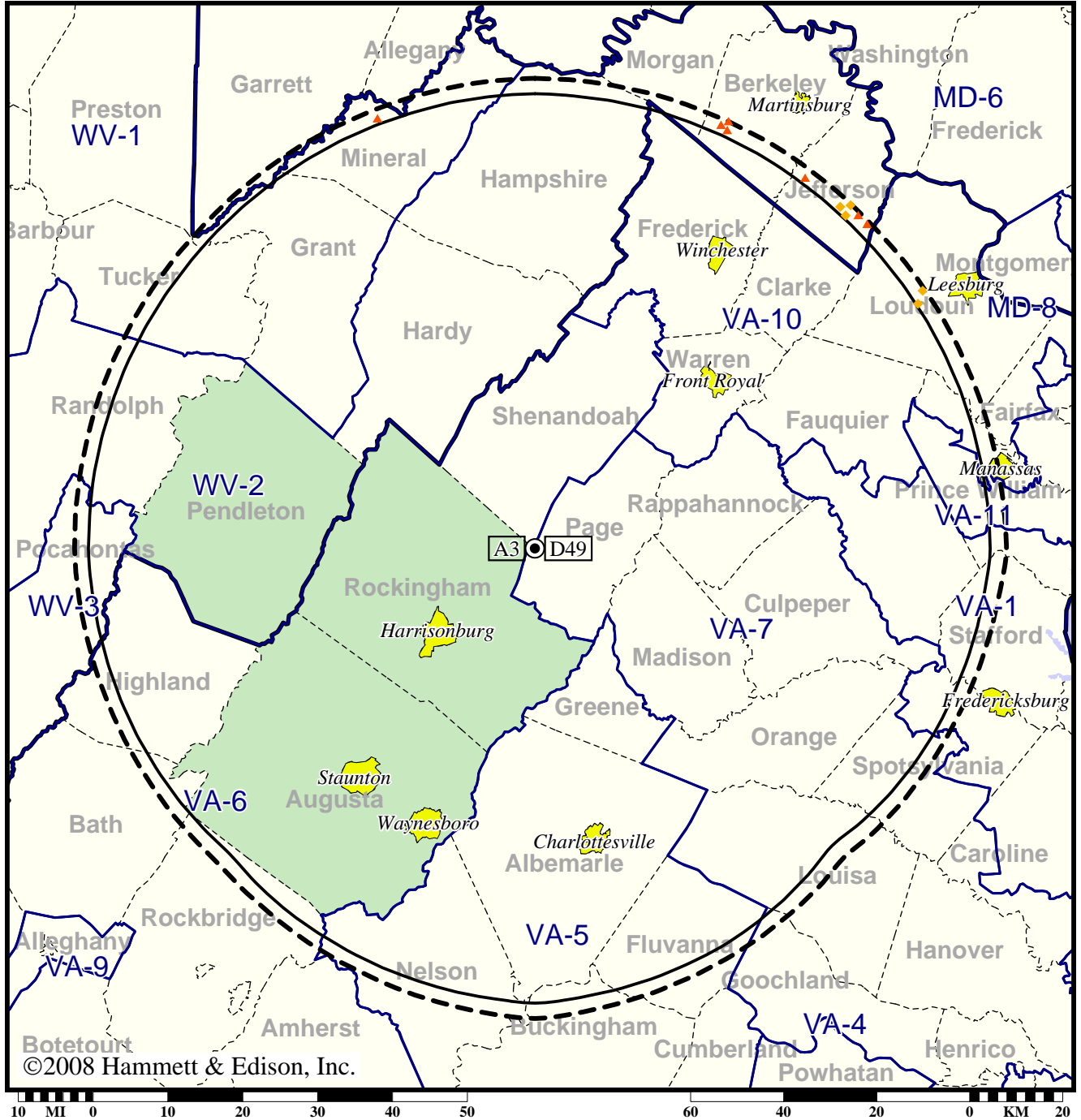


Station WHSV-TV • Analog Channel 3, DTV Channel 49 • Harrisonburg, VA

Expected Change In Coverage: Licensed Operation

Licensed (solid): 65.0 kW ERP at 639 m HAAT, Networks: ABC, Fox
vs. Analog (dashed): 8.32 kW ERP at 646 m HAAT, Network: ABC

Market: Harrisonburg, VA



- (no symbol) No change in coverage
- ◆ Coverage lost but still served by same network
- ▲ Coverage lost and no other service by same network

Harrisonburg, VA

WHSV-TV

Population Receiving Analog Service497,246
Population Receiving Digital Service.....398,636

The following statistics pertain only to the area outside
the analog service contour:

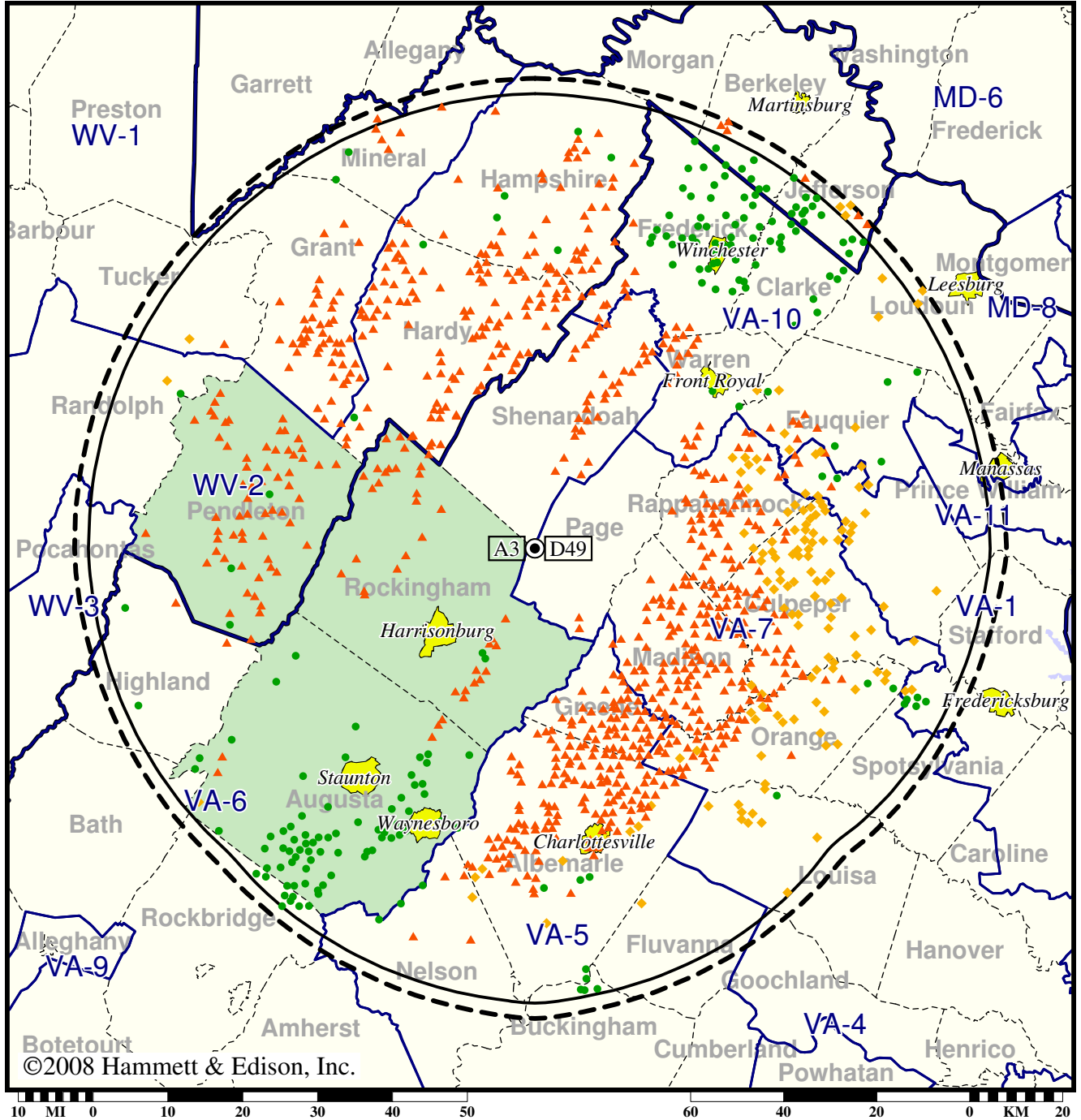
Analog Population Losing Service3,438
Population Gaining Digital Service0
Net Gain-3,438

Station WHSV-TV • Analog Channel 3, DTV Channel 49 • Harrisonburg, VA

Expected Change In Coverage: Licensed Operation

Licensed (solid): 65.0 kW ERP at 639 m HAAT, Networks: ABC, Fox
vs. Analog (dashed): 8.32 kW ERP at 646 m HAAT, Network: ABC

Market: Harrisonburg, VA



- Coverage gained after DTV transition
- (no symbol) No change in coverage
- ◆ Coverage lost but still served by same network
- ▲ Coverage lost and no other service by same network

Harrisonburg, VA

WHSV-TV

Population Receiving Analog Service	497,246
Population Receiving Digital Service.....	398,636
Analog Population Losing Service	157,878
Population Gaining Digital Service	59,268
Net Gain	-98,610