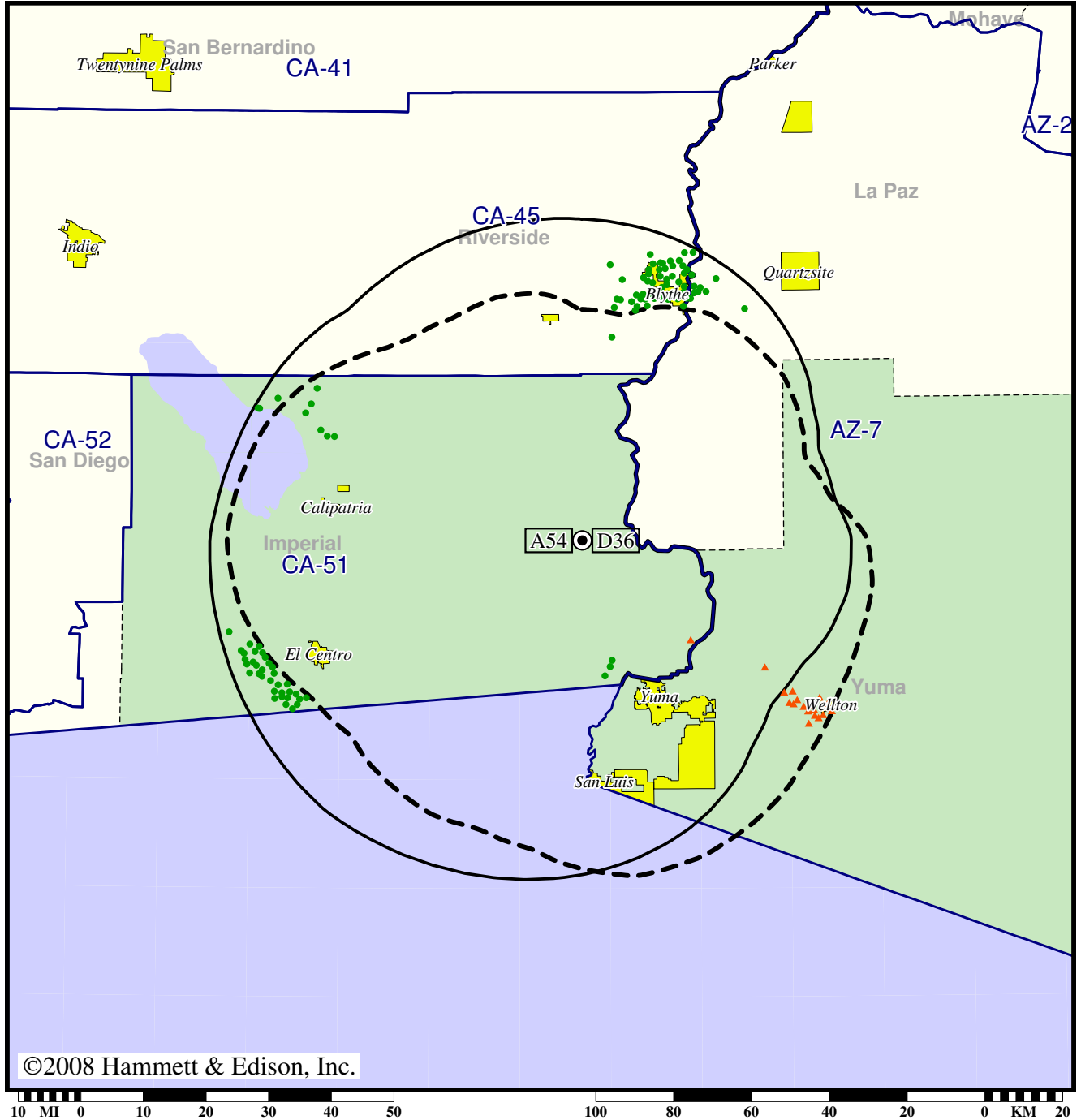


TV Station KAJB • Analog Channel 54, DTV Channel 36 • Calipatria, CA

Expected Change In Coverage: Granted Construction Permit

CP (solid): 155 kW ERP at 476 m HAAT
vs. Analog (dashed): 5000 kW ERP at 428 m HAAT

Market: Yuma, AZ-El Centro, CA



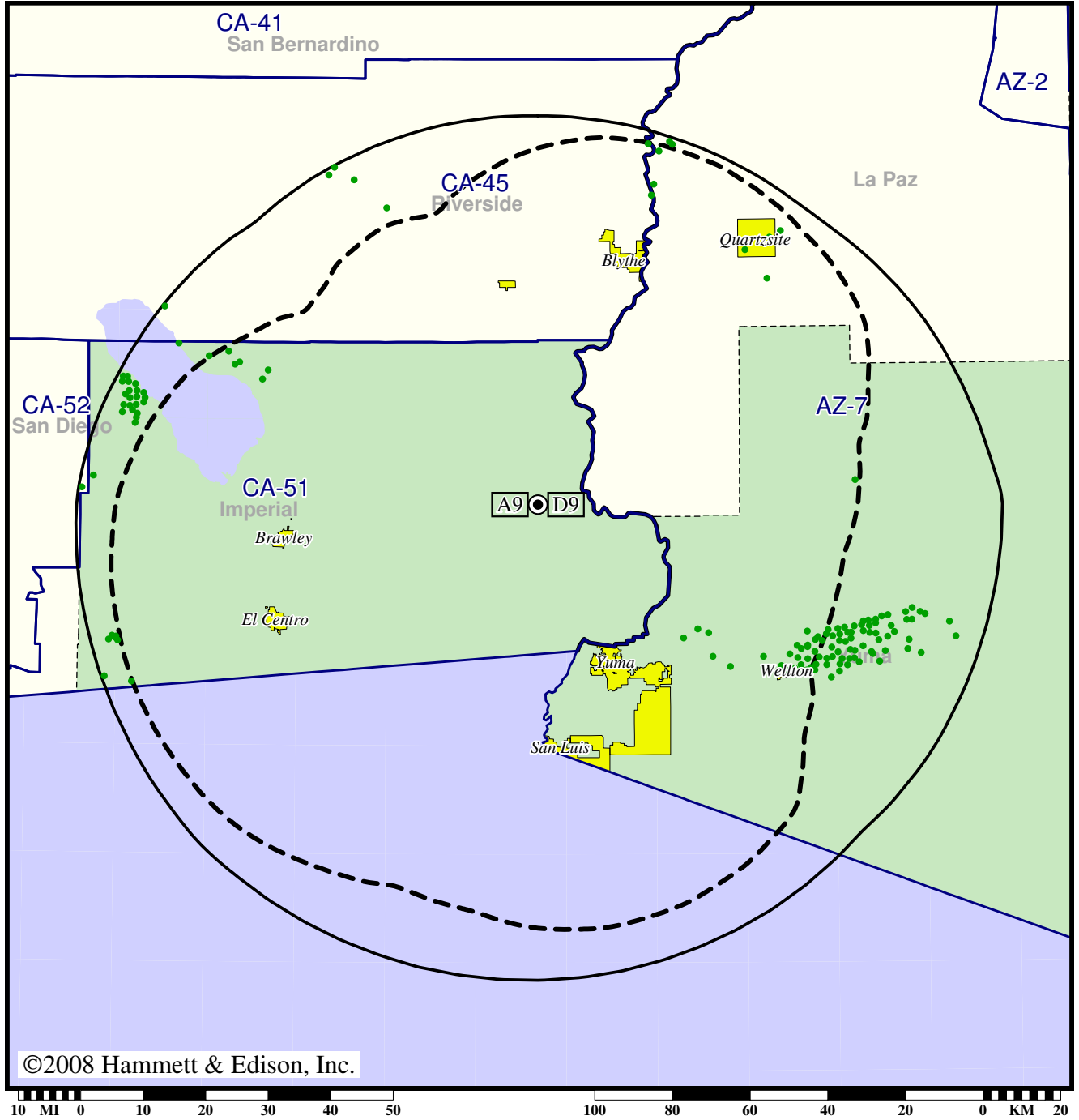
- Coverage gained after DTV transition
- (no symbol) No change in coverage
- ▲ Coverage lost after DTV transition

Station KECY-TV • Analog Channel 9, DTV Channel 9 • El Centro, CA

Expected Change In Coverage: Granted Construction Permit

CP (solid): 50.0 kW ERP at 484 m HAAT, Networks: ABC, Fox
vs. Analog (dashed): 316 kW ERP at 484 m HAAT, Network: Fox

Market: Yuma, AZ-El Centro, CA



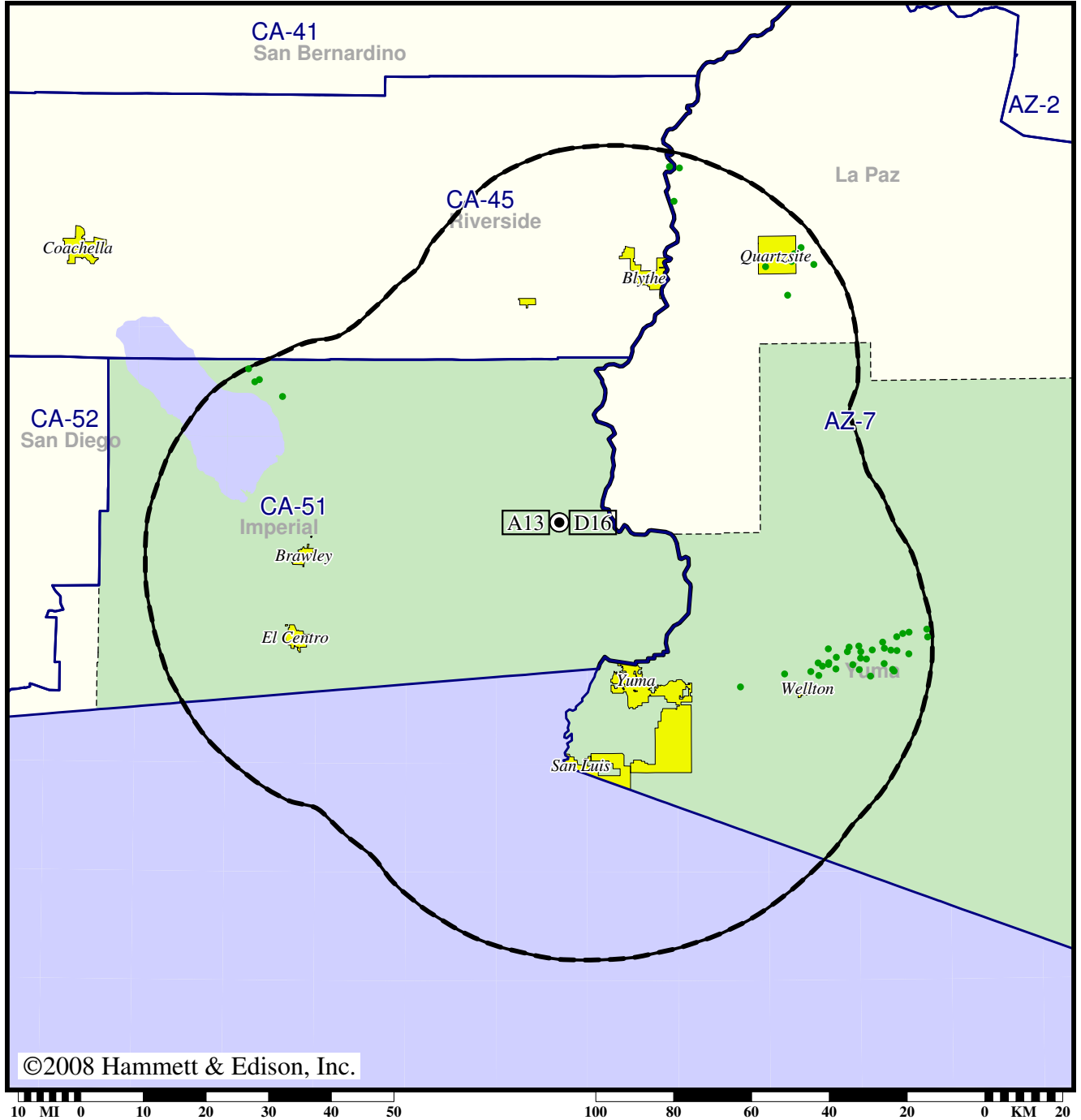
- Coverage gained after DTV transition
- (no symbol) No change in coverage

TV Station KSWT • Analog Channel 13, DTV Channel 16 • Yuma, AZ

Expected Change In Coverage: Post-Transition Appendix B Facility

Appendix B (solid): 510 kW ERP at 475 m HAAT, Network: CBS
vs. Analog (dashed): 316 kW ERP at 475 m HAAT, Network: CBS

Market: Yuma, AZ-El Centro, CA



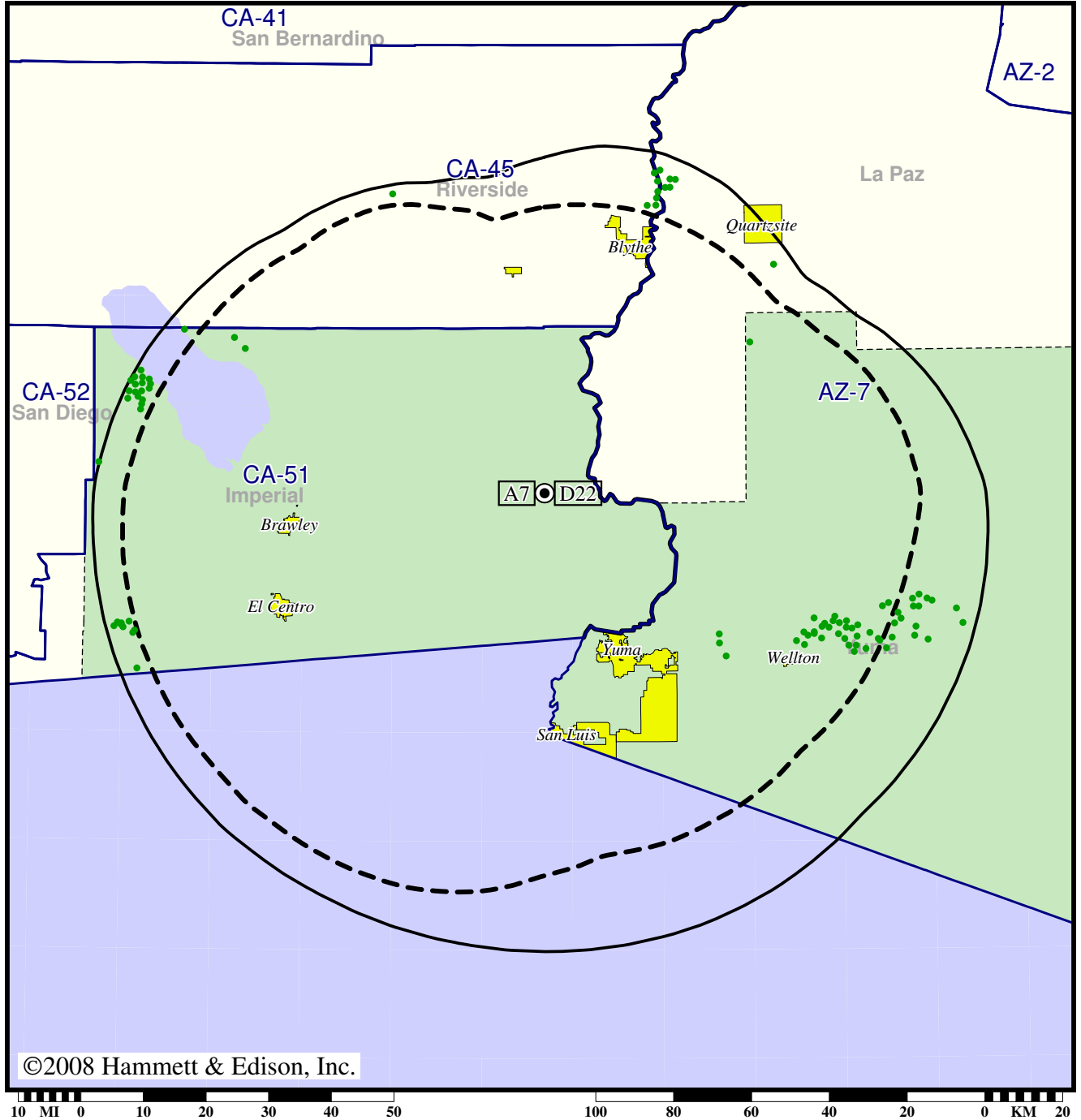
● Coverage gained after DTV transition
(no symbol) No change in coverage

TV Station KVEE • Analog Channel 7, DTV Channel 22 • El Centro, CA

Expected Change In Coverage: Post-Transition Appendix B Facility

Appendix B (solid): 1000 kW ERP at 477 m HAAT
vs. Analog (dashed): 316 kW ERP at 444 m HAAT

Market: Yuma, AZ-El Centro, CA



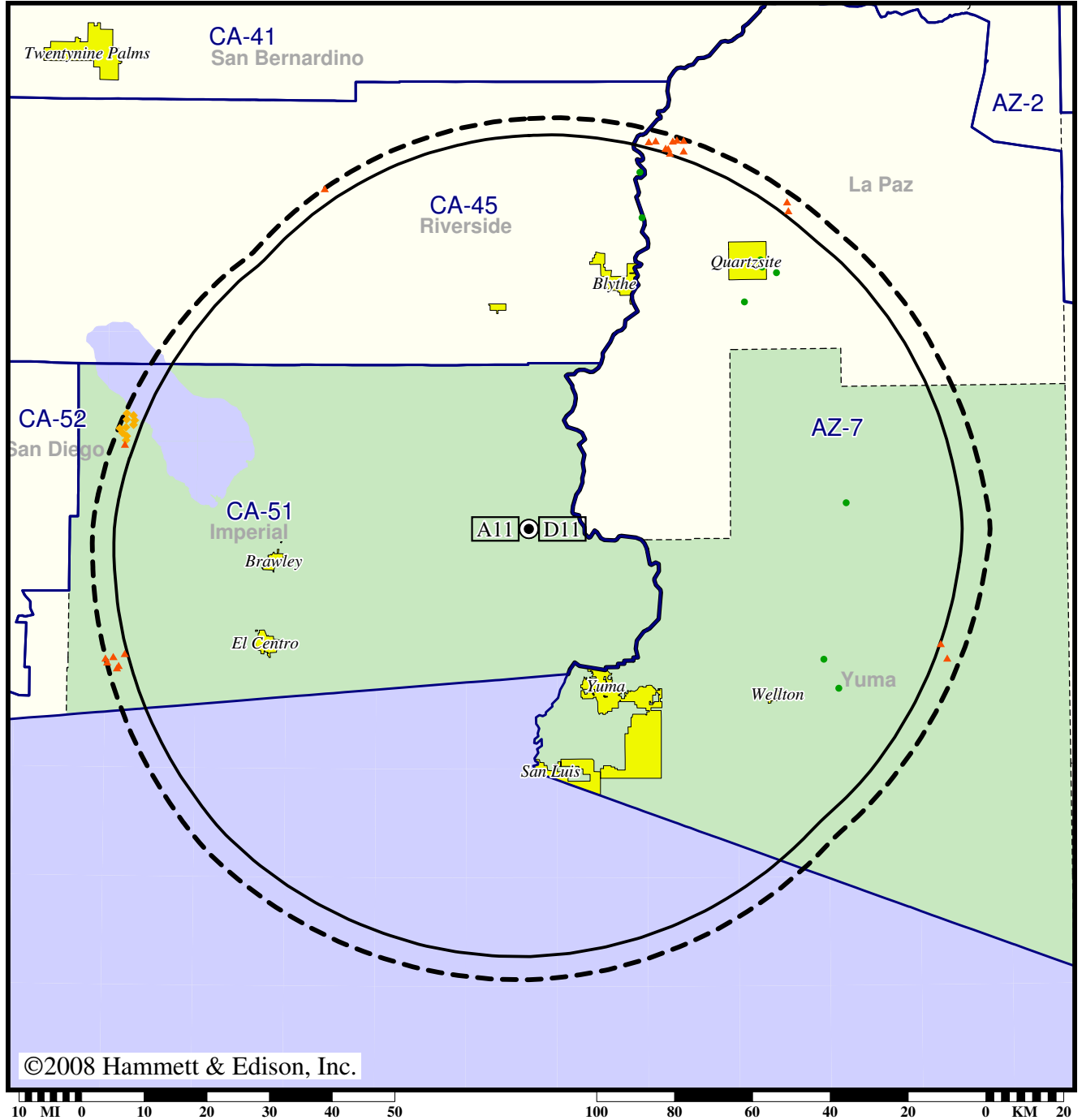
- Coverage gained after DTV transition
- (no symbol) No change in coverage

TV Station KYMA • Analog Channel 11, DTV Channel 11 • Yuma, AZ

Expected Change In Coverage: Granted Construction Permit

CP (solid): 10.3 kW ERP at 493 m HAAT, Network: NBC
 vs. Analog (dashed): 316 kW ERP at 493 m HAAT, Network: NBC

Market: Yuma, AZ-El Centro, CA



©2008 Hammett & Edison, Inc.

- Coverage gained after DTV transition
- (no symbol) No change in coverage
- ◆ Coverage lost but still served by same network
- ▲ Coverage lost and no other service by same network