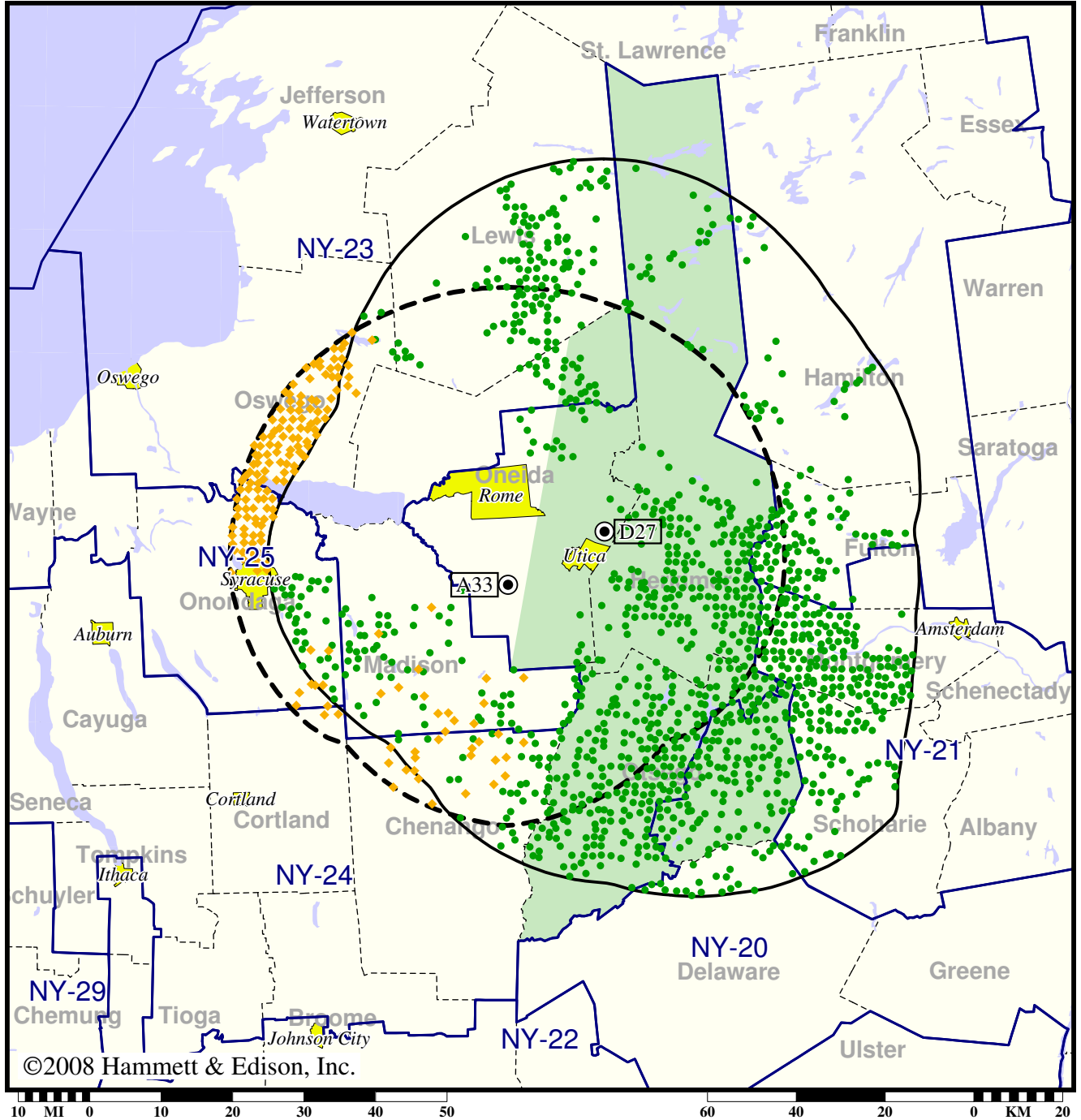


TV Station WFXV • Analog Channel 33, DTV Channel 27 • Utica, NY

Expected Change In Coverage: Granted Construction Permit

CP (solid): 1000 kW ERP at 211 m HAAT, Network: Fox  
vs. Analog (dashed): 851 kW ERP at 193 m HAAT, Network: Fox

Market: Utica, NY



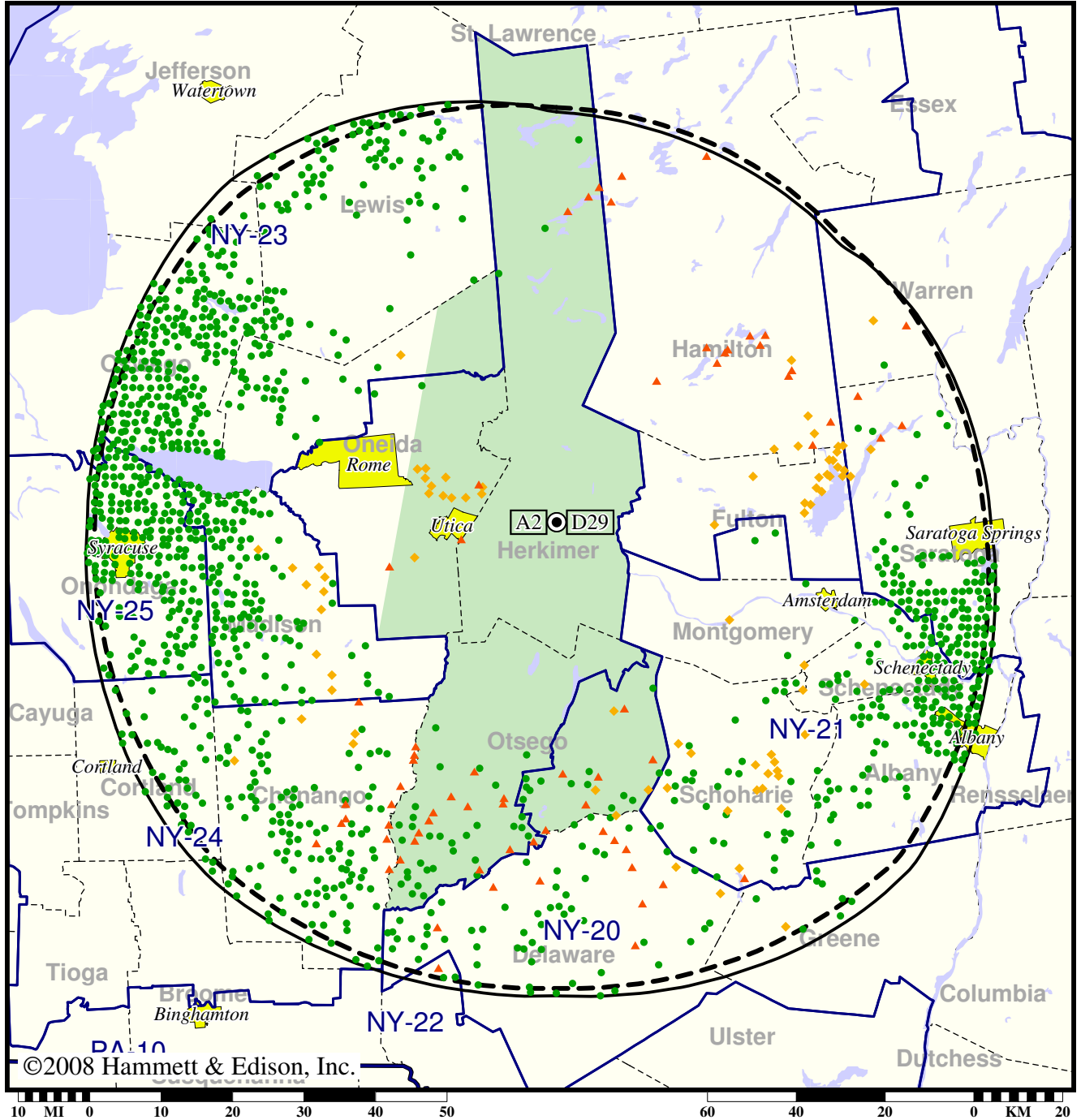
- Coverage gained after DTV transition
- (no symbol) No change in coverage
- ◆ Coverage lost but still served by same network

TV Station WKTV • Analog Channel 2, DTV Channel 29 • Utica, NY

Expected Change In Coverage: Licensed Operation

Licensed (solid): 708 kW ERP at 402 m HAAT, Network: NBC  
vs. Analog (dashed): 34.7 kW ERP at 421 m HAAT, Network: NBC

Market: Utica, NY



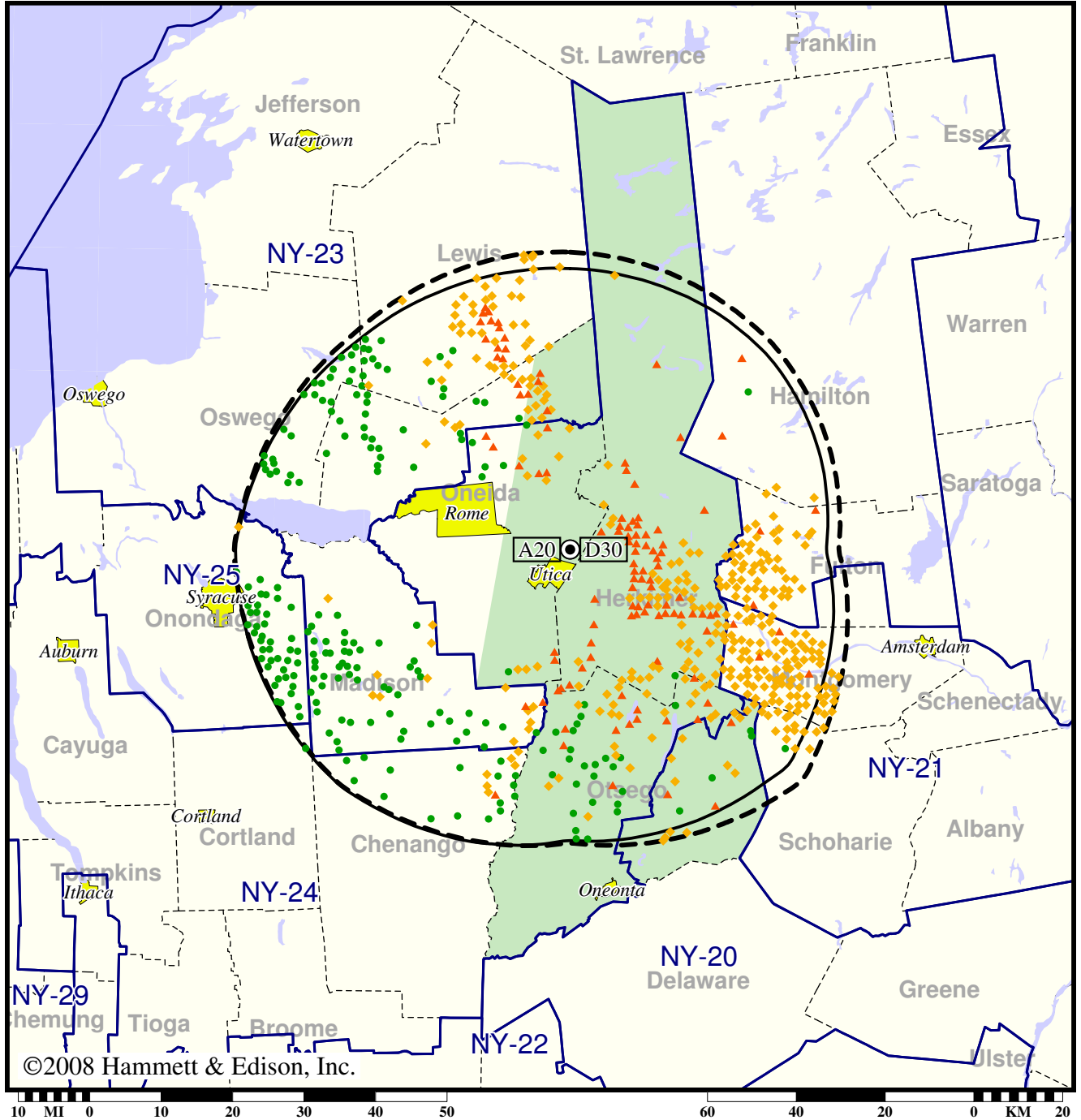
- Coverage gained after DTV transition
- (no symbol) No change in coverage
- ◆ Coverage lost but still served by same network
- ▲ Coverage lost and no other service by same network

TV Station WUTR • Analog Channel 20, DTV Channel 30 • Utica, NY

Expected Change In Coverage: Licensed Operation

Licensed (solid): 50.0 kW ERP at 227 m HAAT, Network: ABC  
vs. Analog (dashed): 1150 kW ERP at 244 m HAAT, Network: ABC

Market: Utica, NY



- Coverage gained after DTV transition
- (no symbol) No change in coverage
- ◆ Coverage lost but still served by same network
- ▲ Coverage lost and no other service by same network