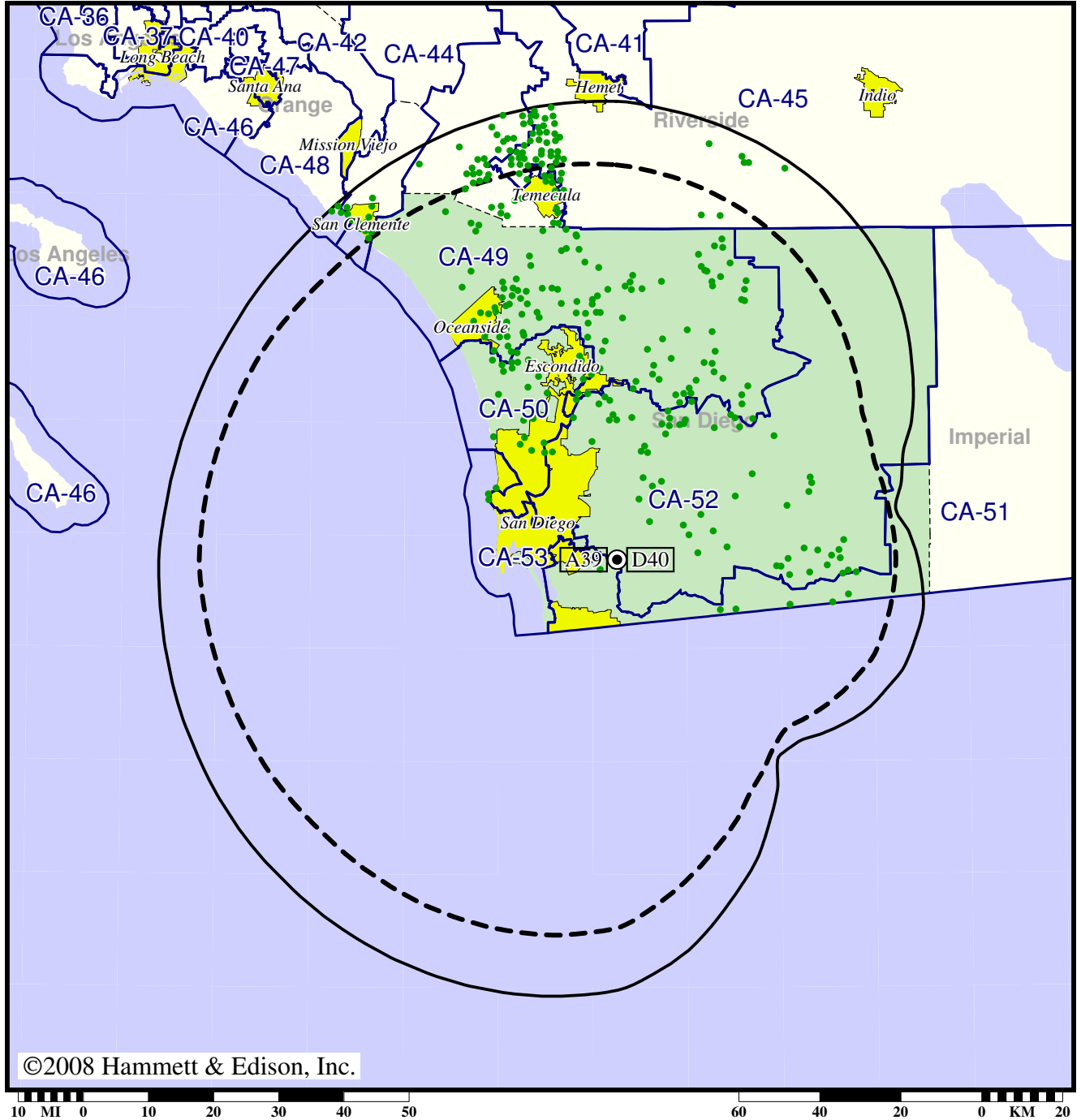


TV Station KNSD • Analog Channel 39, DTV Channel 40 • San Diego, CA

Expected Change In Coverage: Licensed Operation

Licensed (solid): 370 kW ERP at 566 m HAAT, Network: NBC
vs. Analog (dashed): 2510 kW ERP at 577 m HAAT, Network: NBC

Market: San Diego, CA



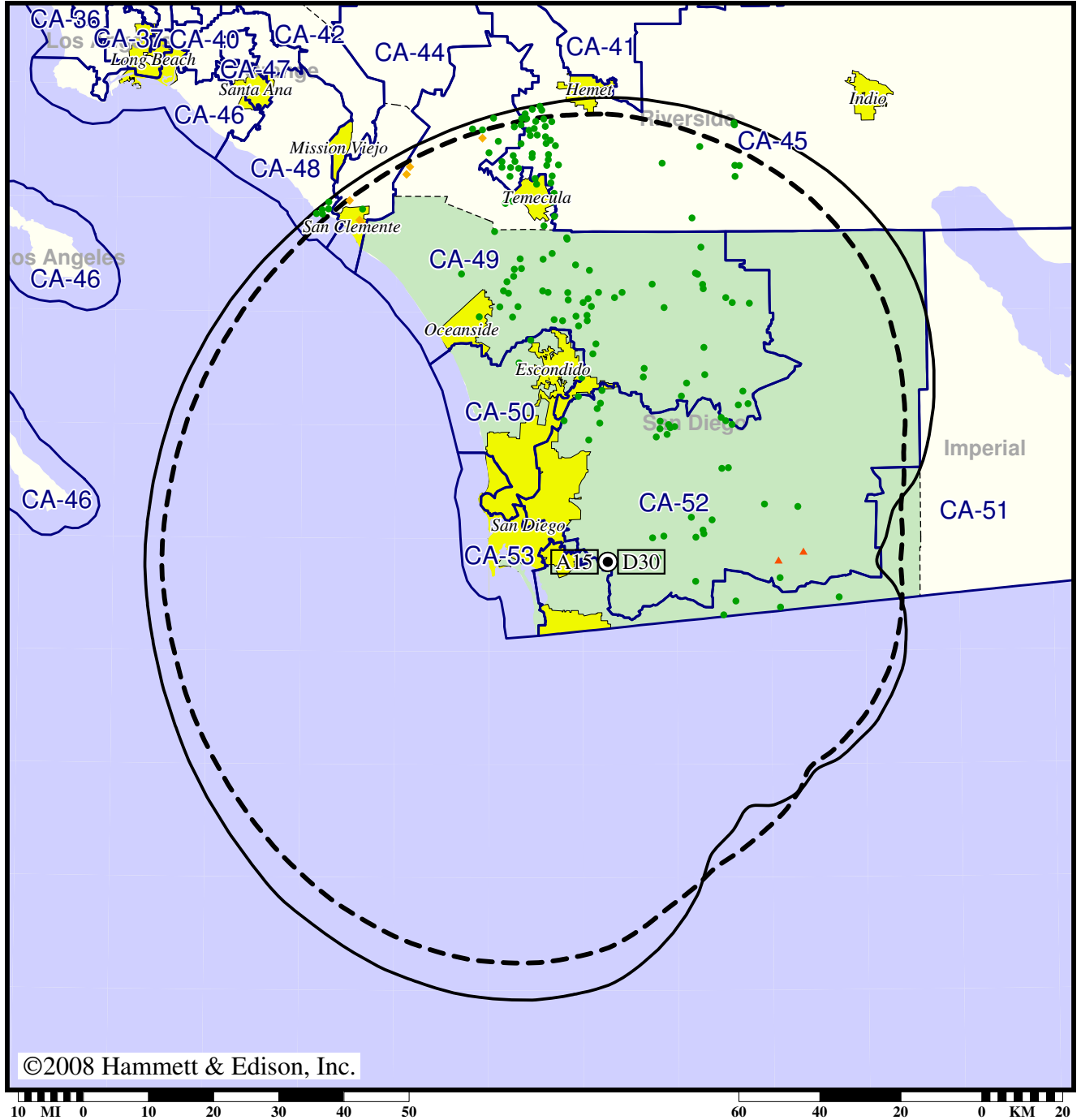
- Coverage gained after DTV transition
- (no symbol) No change in coverage

TV Station KPBS • Analog Channel 15, DTV Channel 30 • San Diego, CA

Expected Change In Coverage: Licensed Operation

Licensed (solid): 350 kW ERP at 567 m HAAT, Network: PBS
vs. Analog (dashed): 3310 kW ERP at 572 m HAAT, Network: PBS

Market: San Diego, CA



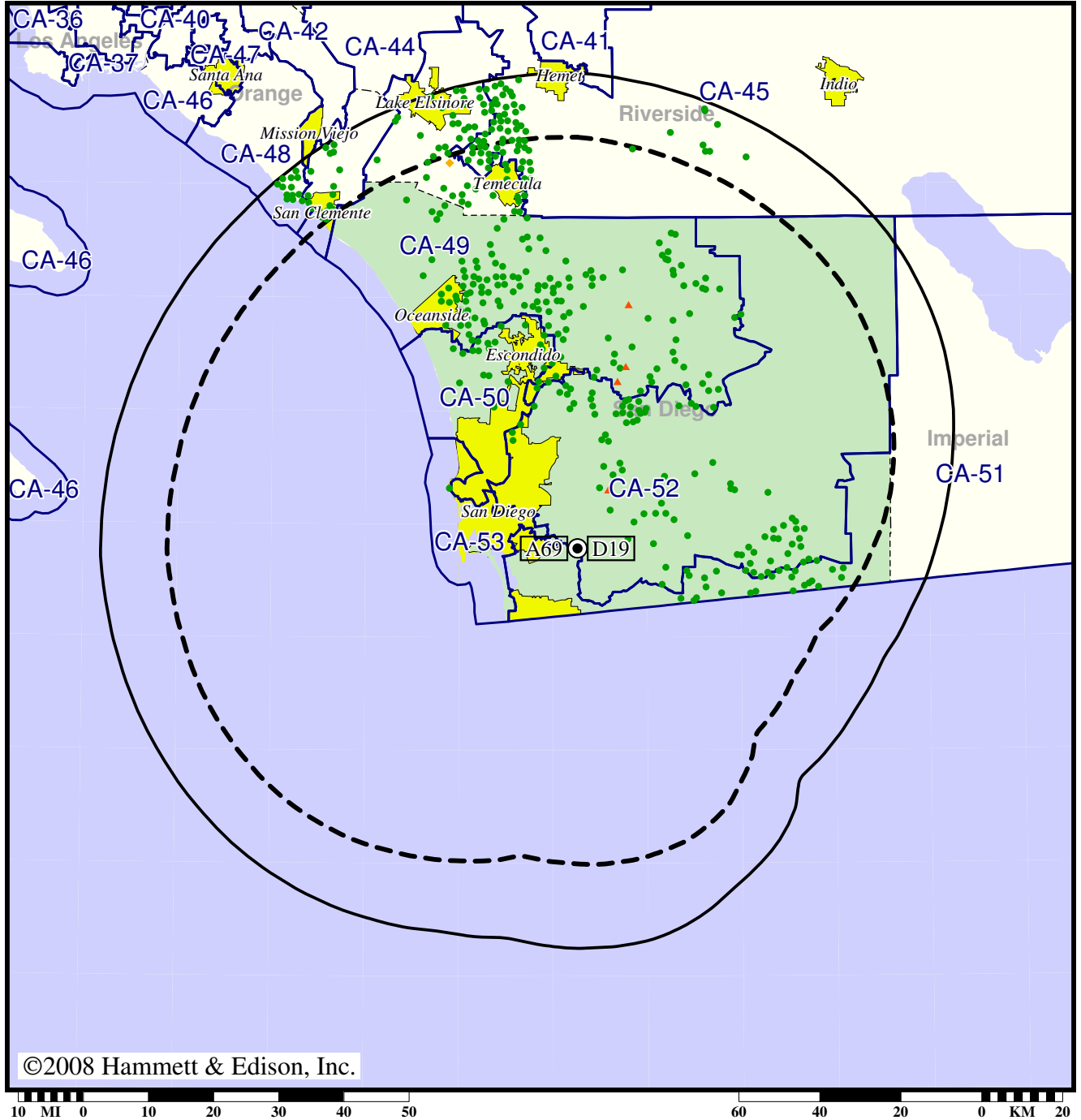
- Coverage gained after DTV transition
- (no symbol) No change in coverage
- ◆ Coverage lost but still served by same network
- ▲ Coverage lost and no other service by same network

Station KSWB-TV • Analog Channel 69, DTV Channel 19 • San Diego, CA

Expected Change In Coverage: Licensed Operation

Licensed (solid): 323 kW ERP at 598 m HAAT, Network: Fox
vs. Analog (dashed): 4470 kW ERP at 594 m HAAT, Network: Fox

Market: San Diego, CA



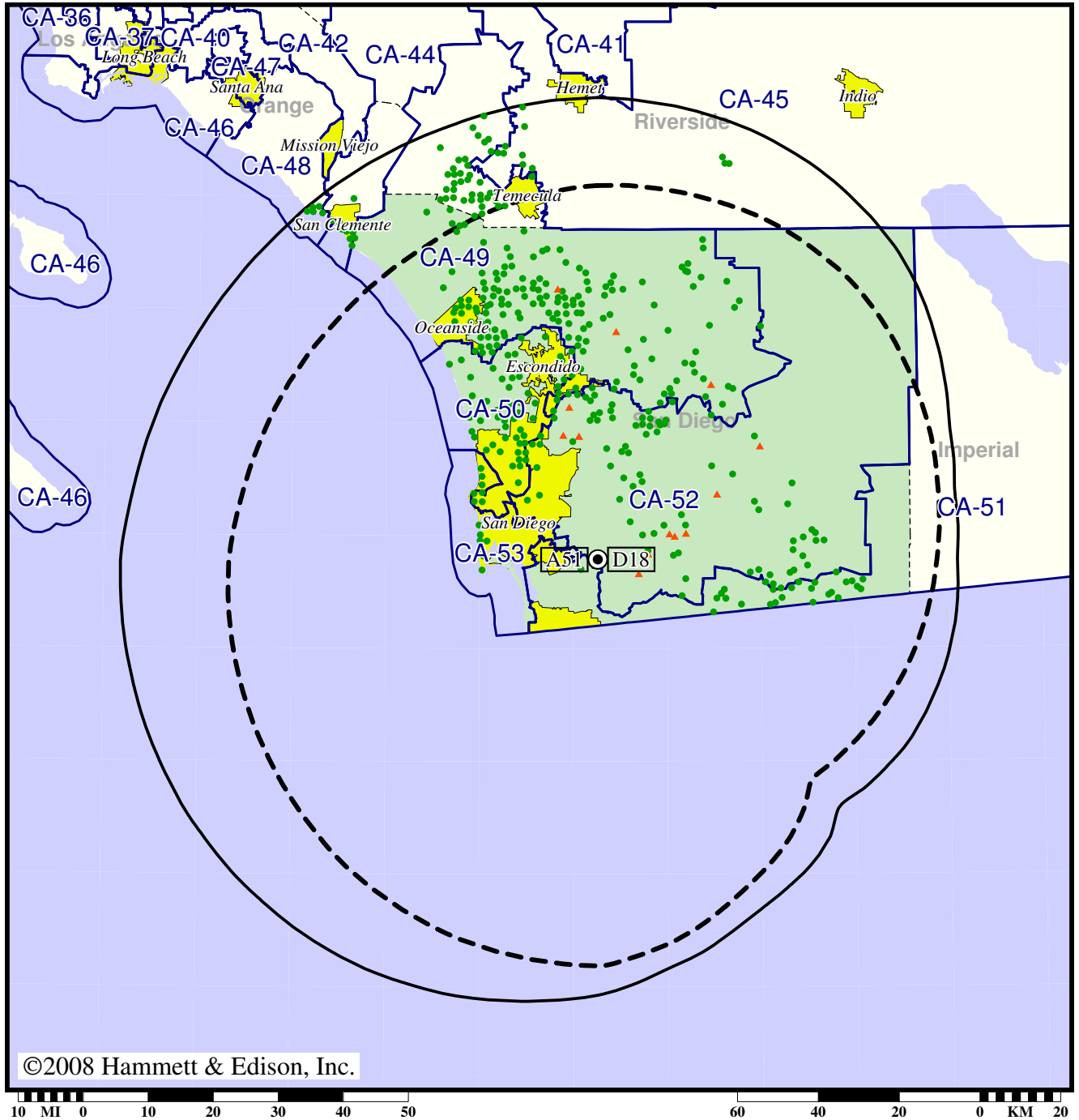
- Coverage gained after DTV transition
- (no symbol) No change in coverage
- ◆ Coverage lost but still served by same network
- ▲ Coverage lost and no other service by same network

Station KUSI-TV • Analog Channel 51, DTV Channel 18 • San Diego, CA

Expected Change In Coverage: Licensed Operation

Licensed (solid): 355 kW ERP at 576 m HAAT
vs. Analog (dashed): 2820 kW ERP at 584 m HAAT

Market: San Diego, CA



- Coverage gained after DTV transition
- (no symbol) No change in coverage
- ▲ Coverage lost after DTV transition