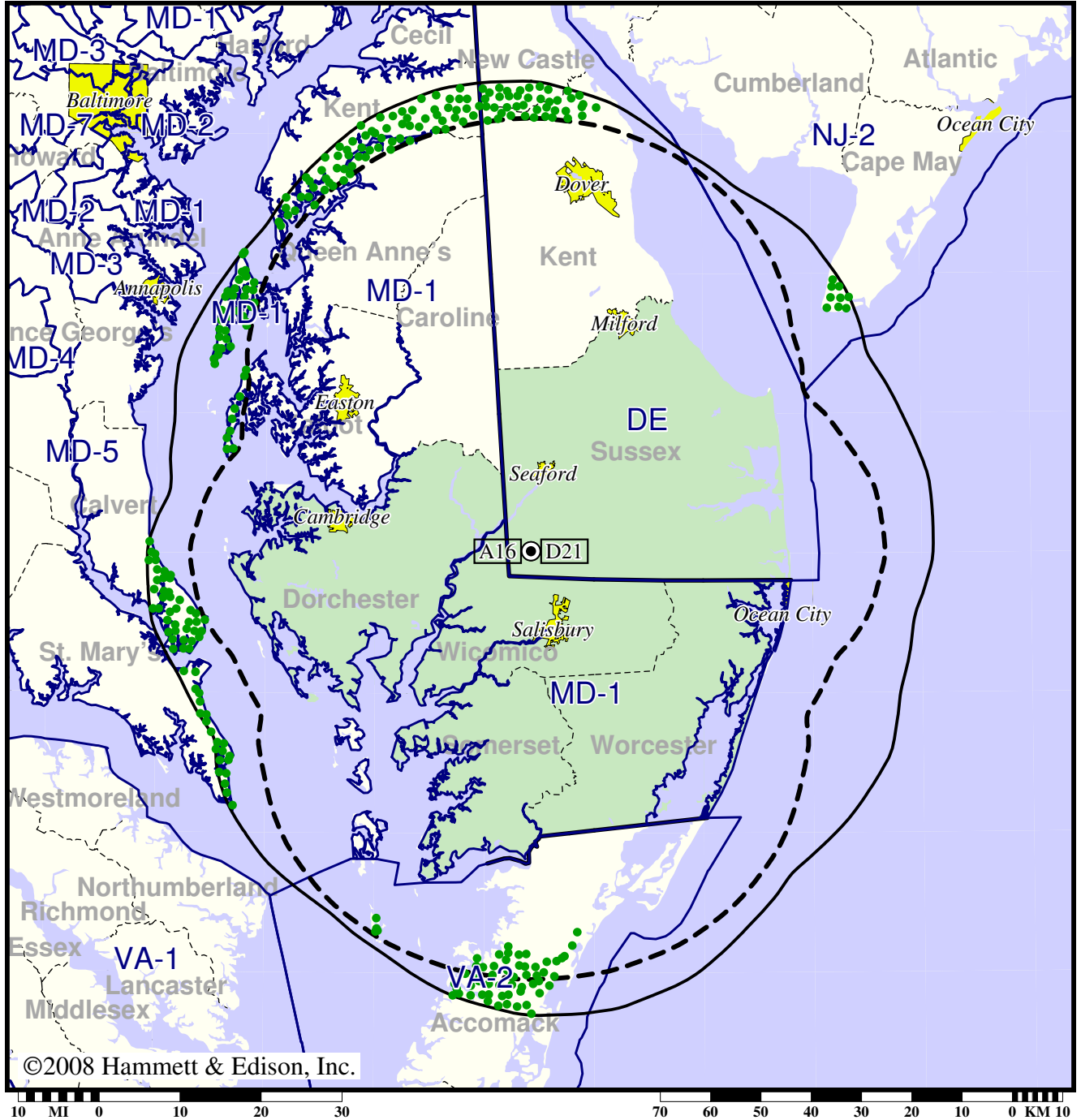


Station WBOC-TV • Analog Channel 16, DTV Channel 21 • Salisbury, MD

Expected Change In Coverage: Licensed Operation

Licensed (solid): 635 kW ERP at 279 m HAAT, Networks: CBS, Fox
vs. Analog (dashed): 4070 kW ERP at 302 m HAAT, Network: CBS

Market: Salisbury, MD



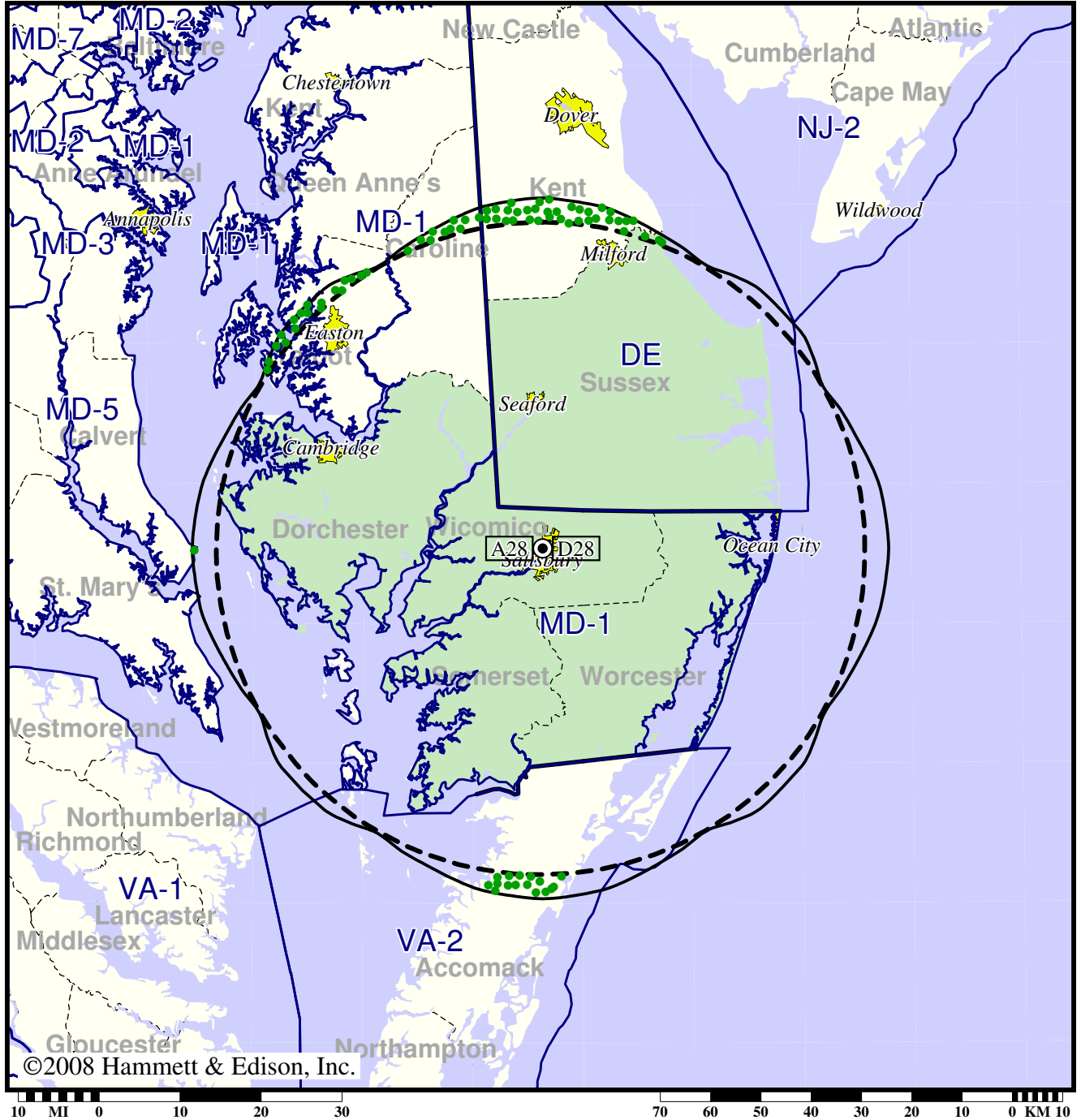
- Coverage gained after DTV transition
- (no symbol) No change in coverage

TV Station WCPB • Analog Channel 28, DTV Channel 28 • Salisbury, MD

Expected Change In Coverage: Granted Construction Permit

CP (solid): 132 kW ERP at 155 m HAAT, Network: PBS
vs. Analog (dashed): 2190 kW ERP at 157 m HAAT, Network: PBS

Market: Salisbury, MD



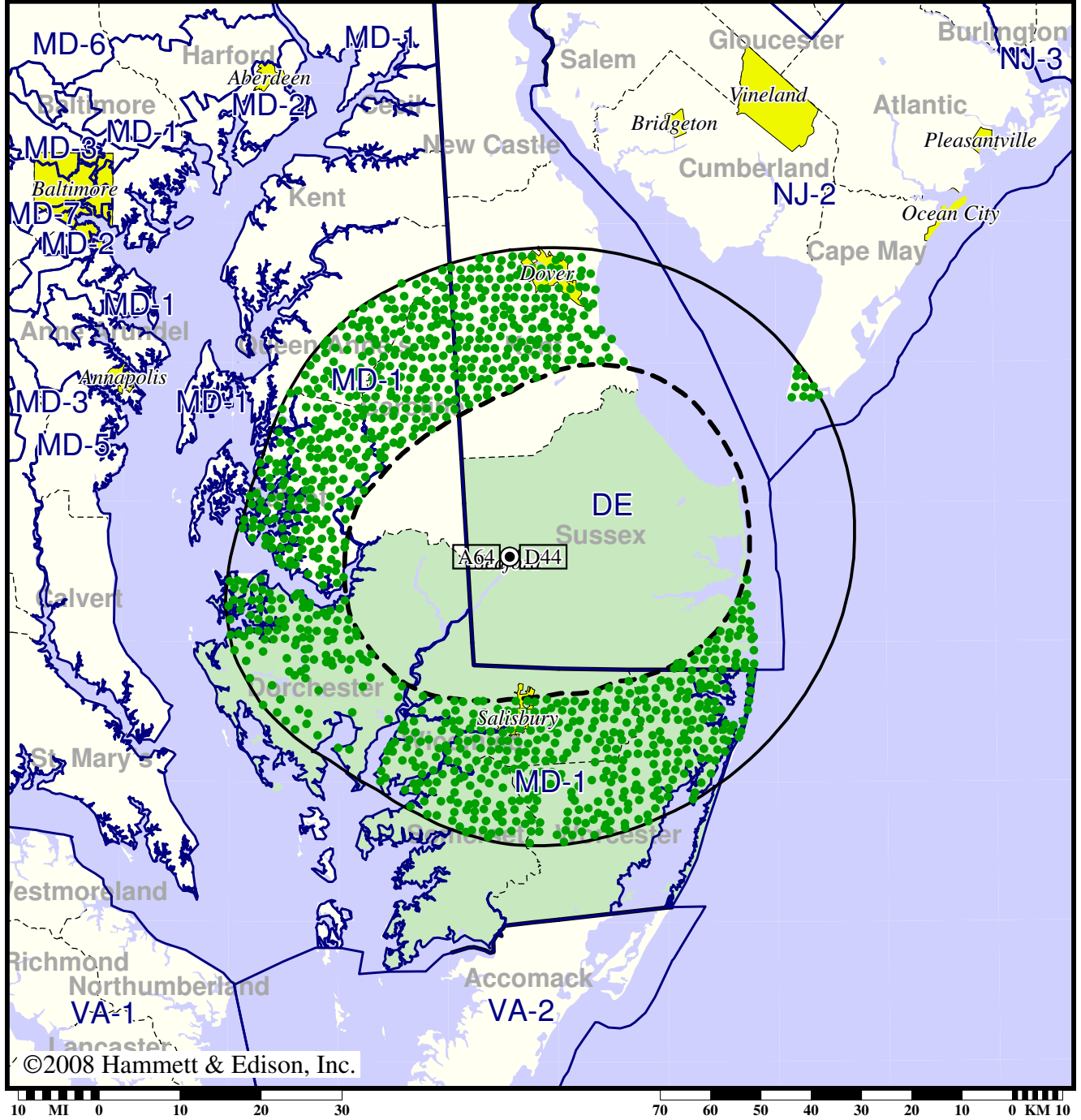
- Coverage gained after DTV transition
- (no symbol) No change in coverage

TV Station WDPB • Analog Channel 64, DTV Channel 44 • Seaford, DE

Expected Change In Coverage: Licensed Operation

Licensed (solid): 98.0 kW ERP at 196 m HAAT, Network: PBS
vs. Analog (dashed): 186 kW ERP at 195 m HAAT, Network: PBS

Market: Salisbury, MD



©2008 Hammett & Edison, Inc.

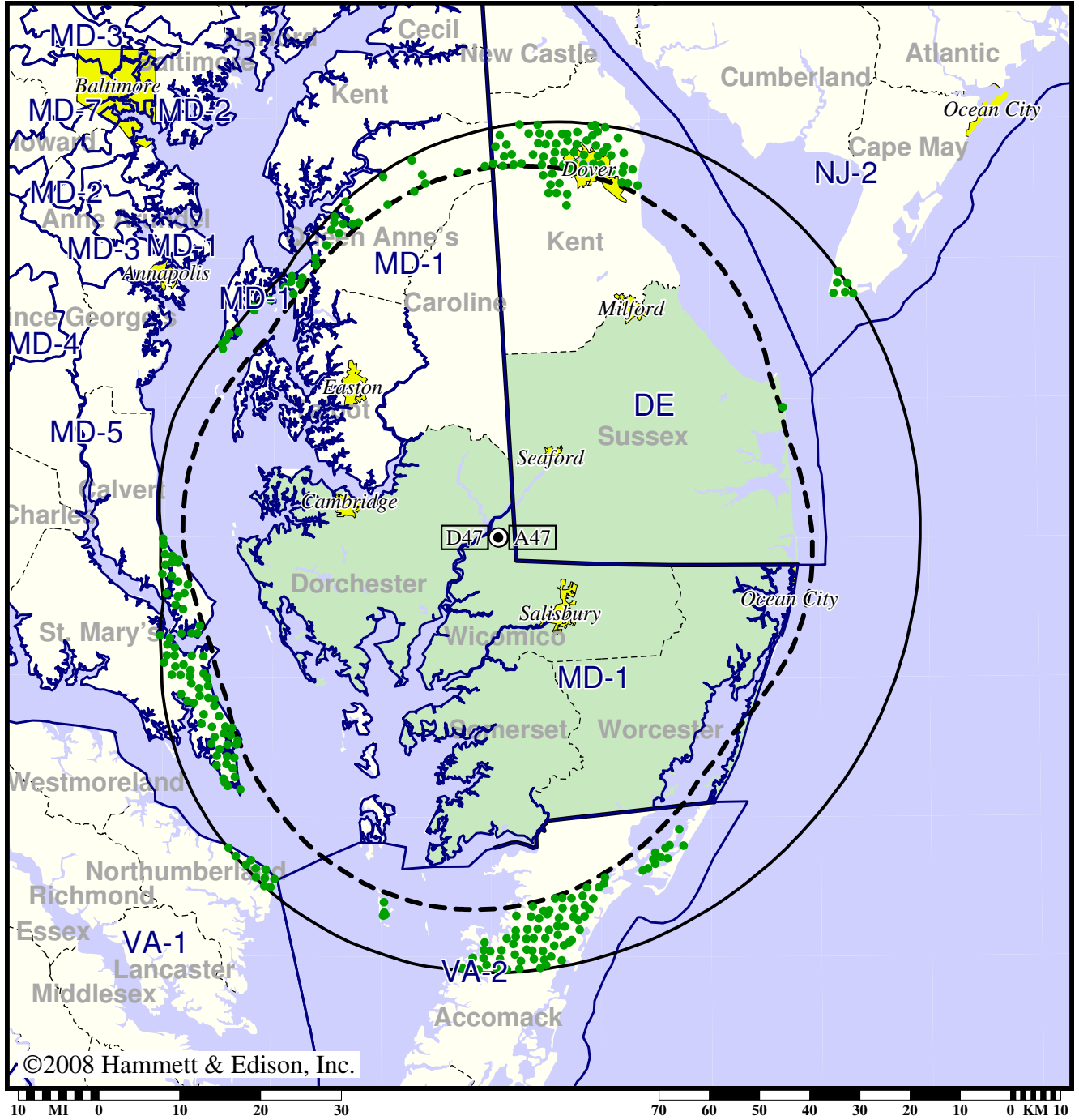
- Coverage gained after DTV transition
- (no symbol) No change in coverage

TV Station WMDT • Analog Channel 47, DTV Channel 47 • Salisbury, MD

Expected Change In Coverage: Granted Construction Permit

CP (solid): 350 kW ERP at 307 m HAAT, Network: ABC
vs. Analog (dashed): 2190 kW ERP at 304 m HAAT, Network: ABC

Market: Salisbury, MD



- Coverage gained after DTV transition
- (no symbol) No change in coverage