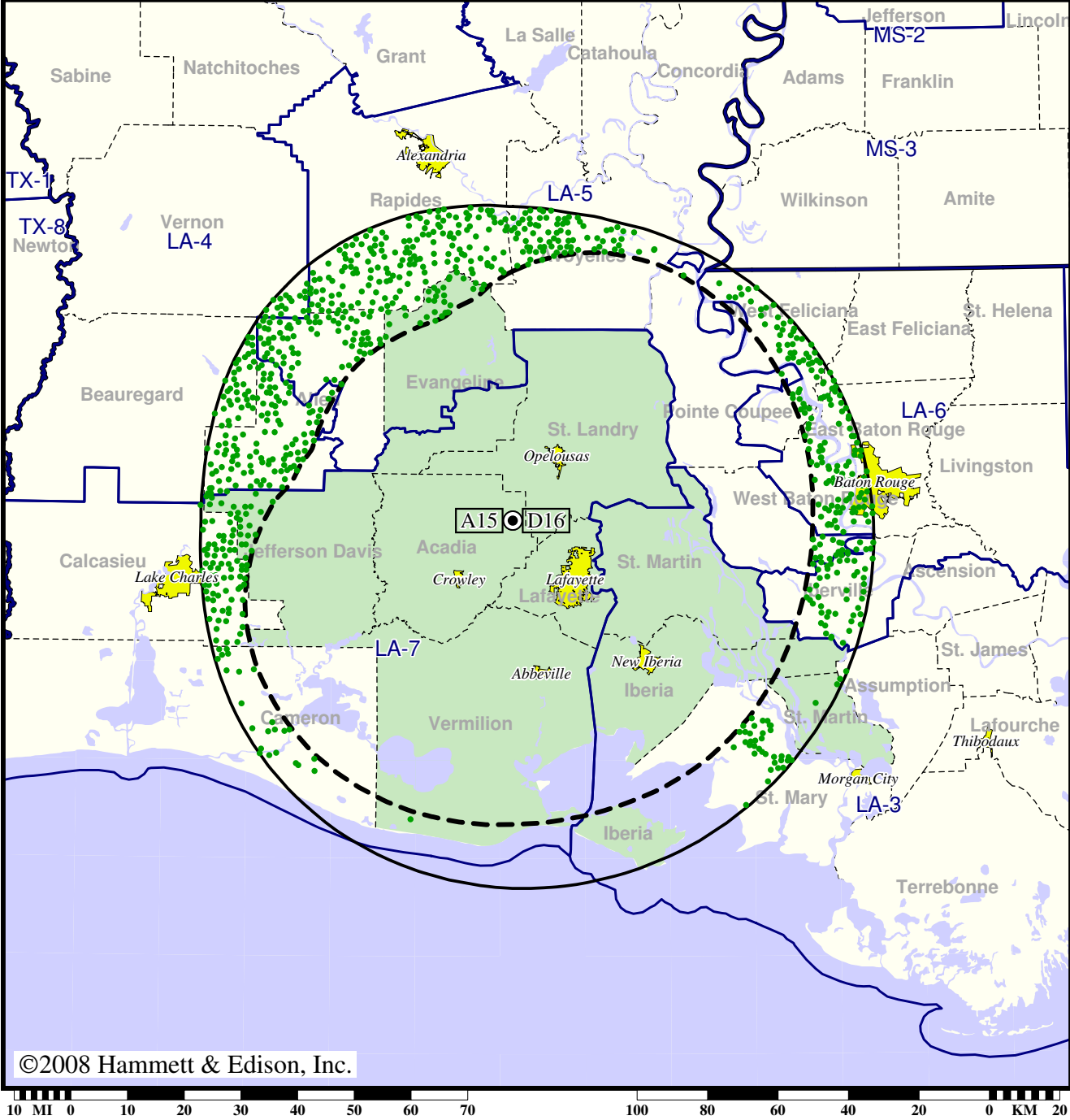


TV Station KADN • Analog Channel 15, DTV Channel 16 • Lafayette, LA

Expected Change In Coverage: Post-Transition Appendix B Facility

Appendix B (solid): 800 kW ERP at 359 m HAAT, Network: Fox
 vs. Analog (dashed): 2510 kW ERP at 360 m HAAT, Network: Fox

Market: Lafayette, LA



©2008 Hammett & Edison, Inc.

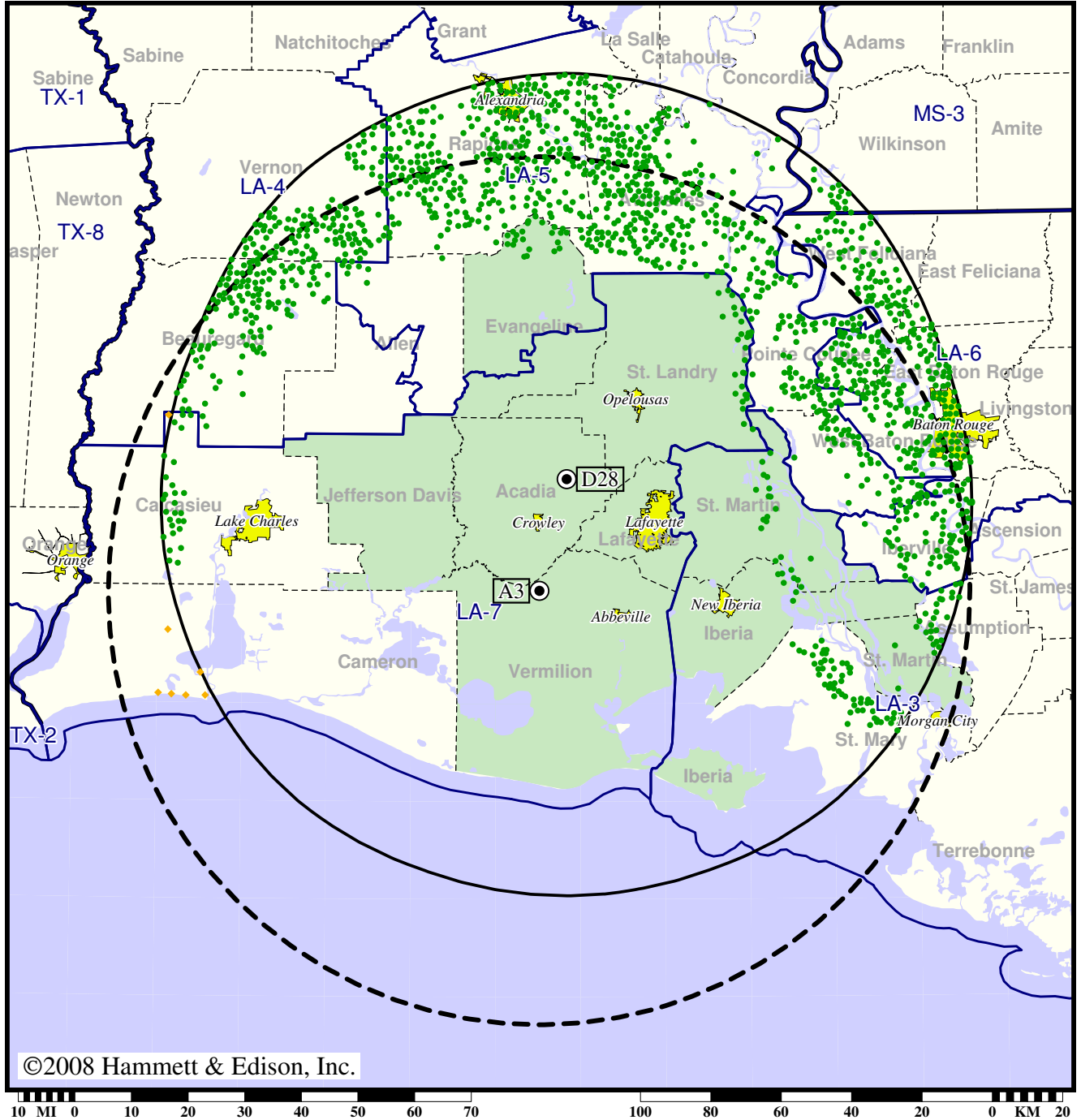
- Coverage gained after DTV transition
- (no symbol) No change in coverage

TV Station KATC • Analog Channel 3, DTV Channel 28 • Lafayette, LA

Expected Change In Coverage: Post-Transition Appendix B Facility

Appendix B (solid): 1000 kW ERP at 537 m HAAT, Network: ABC
vs. Analog (dashed): 100 kW ERP at 530 m HAAT, Network: ABC

Market: Lafayette, LA



©2008 Hammett & Edison, Inc.

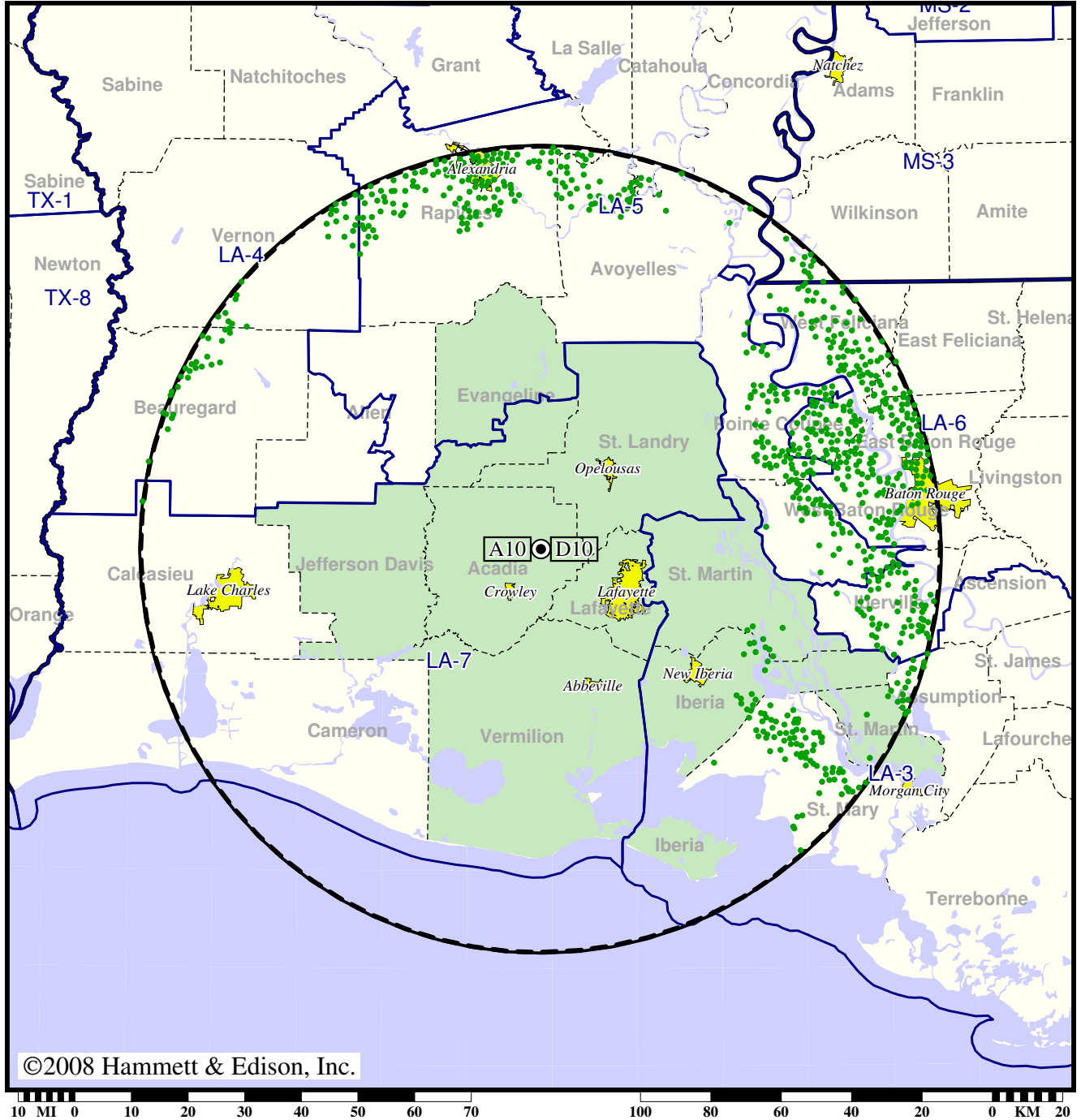
- Coverage gained after DTV transition
- (no symbol) No change in coverage
- ◆ Coverage lost but still served by same network

Station KLFY-TV • Analog Channel 10, DTV Channel 10 • Lafayette, LA

Expected Change In Coverage: Granted Construction Permit

CP (solid): 20.3 kW ERP at 527 m HAAT
vs. Analog (dashed): 302 kW ERP at 527 m HAAT

Market: Lafayette, LA



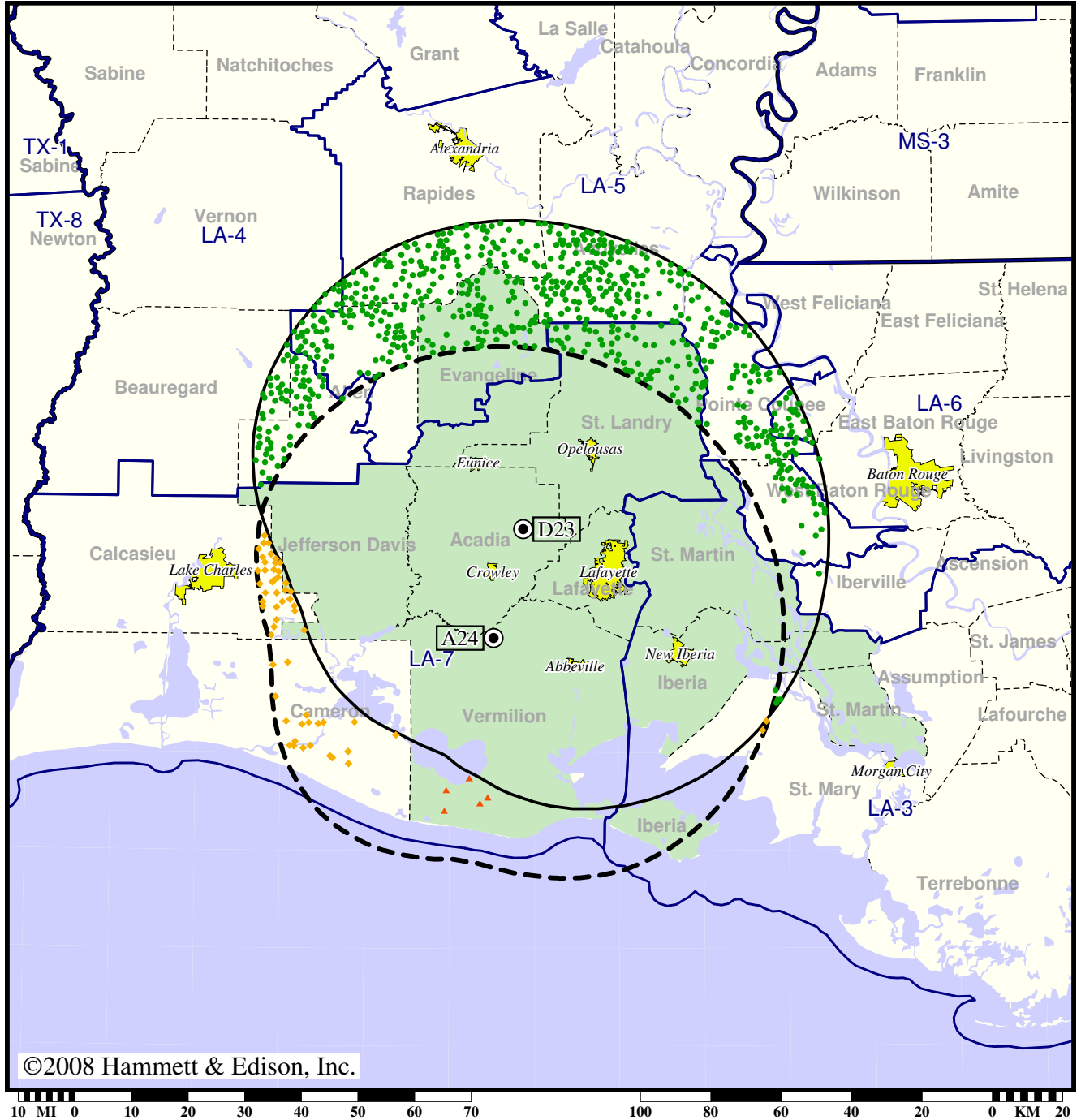
● Coverage gained after DTV transition
(no symbol) No change in coverage

Station KLPB-TV • Analog Channel 24, DTV Channel 23 • Lafayette, LA

Expected Change In Coverage: Licensed Operation

Licensed (solid): 50.0 kW ERP at 463 m HAAT, Network: PBS
 vs. Analog (dashed): 2090 kW ERP at 369 m HAAT, Network: PBS

Market: Lafayette, LA



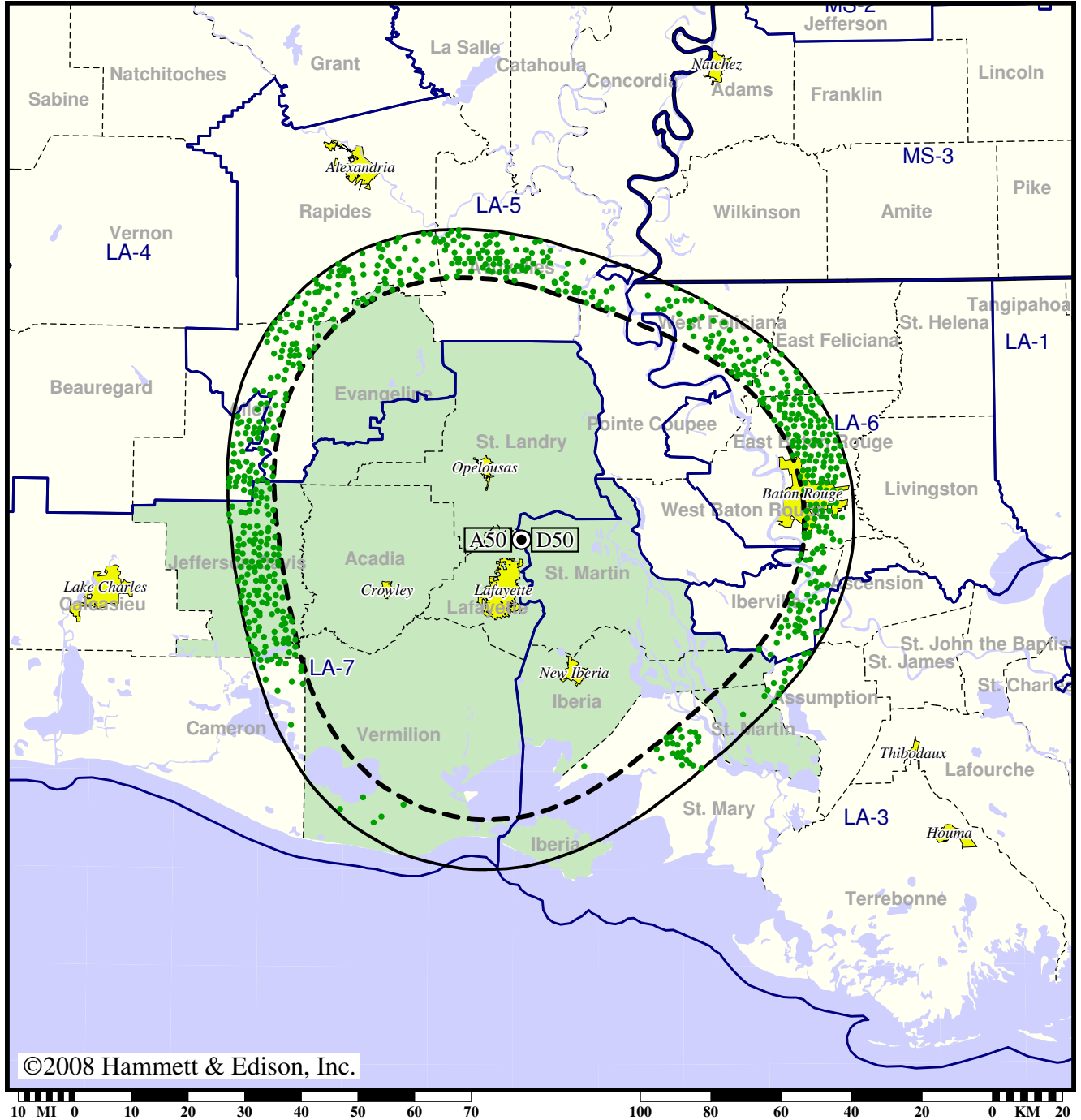
- Coverage gained after DTV transition
- (no symbol) No change in coverage
- ◆ Coverage lost but still served by same network
- ▲ Coverage lost and no other service by same network

TV Station KLWB • Analog Channel 50, DTV Channel 50 • New Iberia, LA

Expected Change In Coverage: Granted Construction Permit

CP (solid): 1000 kW ERP at 303 m HAAT
vs. Analog (dashed): 5000 kW ERP at 303 m HAAT

Market: Lafayette, LA



- Coverage gained after DTV transition
- (no symbol) No change in coverage