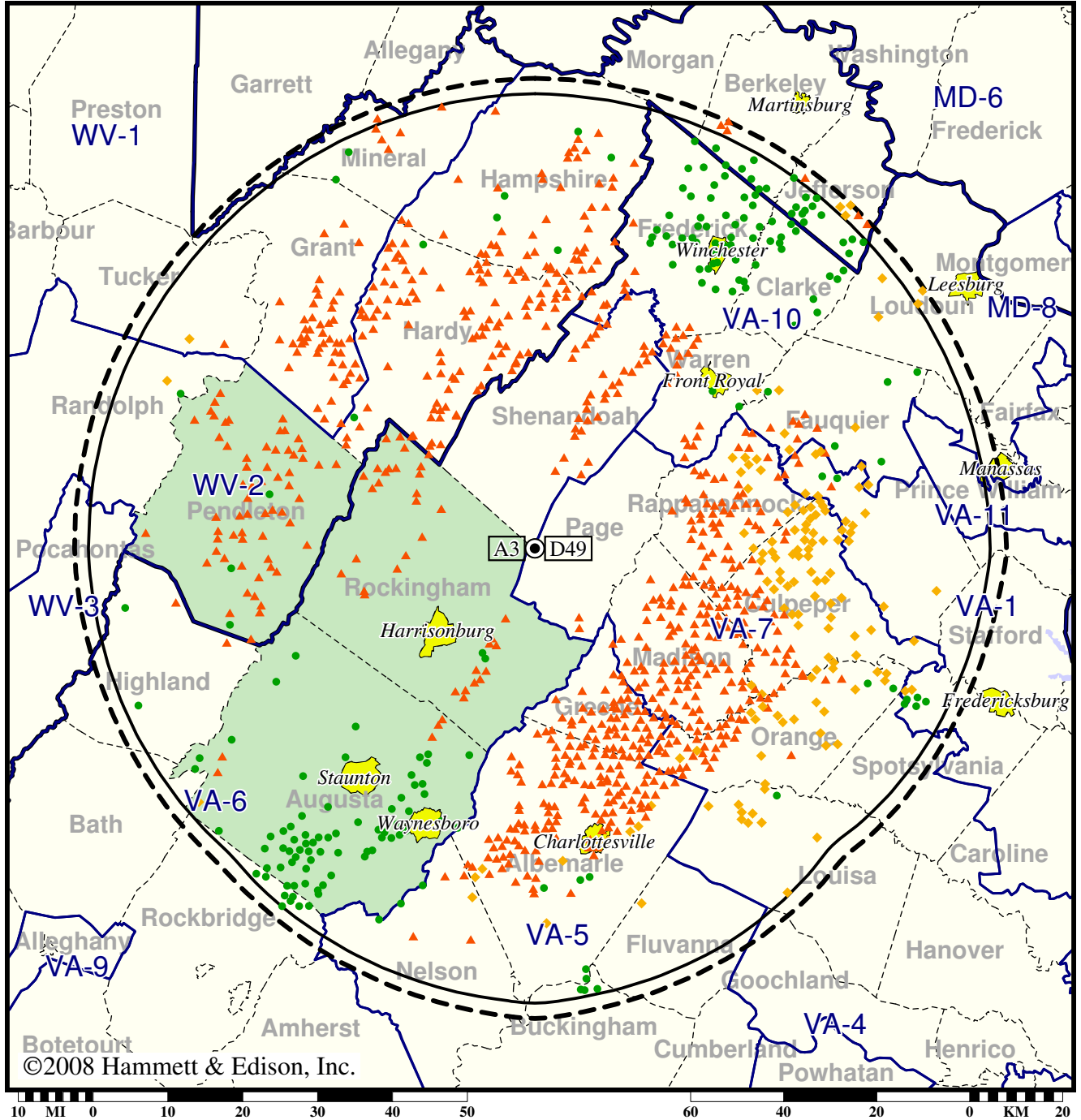


Station WHSV-TV • Analog Channel 3, DTV Channel 49 • Harrisonburg, VA

Expected Change In Coverage: Licensed Operation

Licensed (solid): 65.0 kW ERP at 639 m HAAT, Networks: ABC, Fox  
vs. Analog (dashed): 8.32 kW ERP at 646 m HAAT, Network: ABC

Market: Harrisonburg, VA



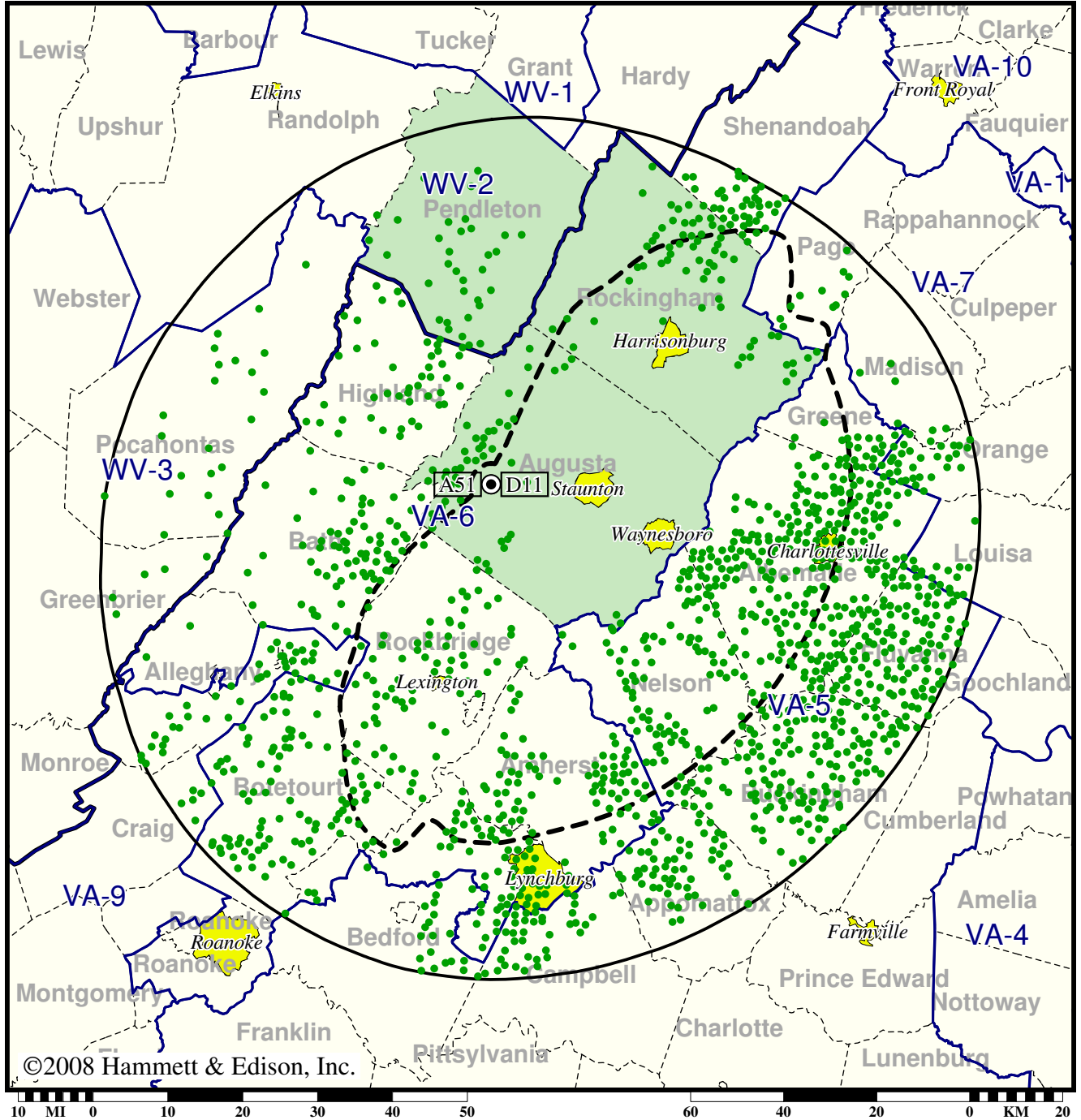
- Coverage gained after DTV transition
- (no symbol) No change in coverage
- ◆ Coverage lost but still served by same network
- ▲ Coverage lost and no other service by same network

TV Station WVPT • Analog Channel 51, DTV Channel 11 • Staunton, VA

Expected Change In Coverage: Licensed Operation

Licensed (solid): 3.20 kW ERP at 680 m HAAT, Network: PBS  
vs. Analog (dashed): 525 kW ERP at 680 m HAAT, Network: PBS

Market: Harrisonburg, VA



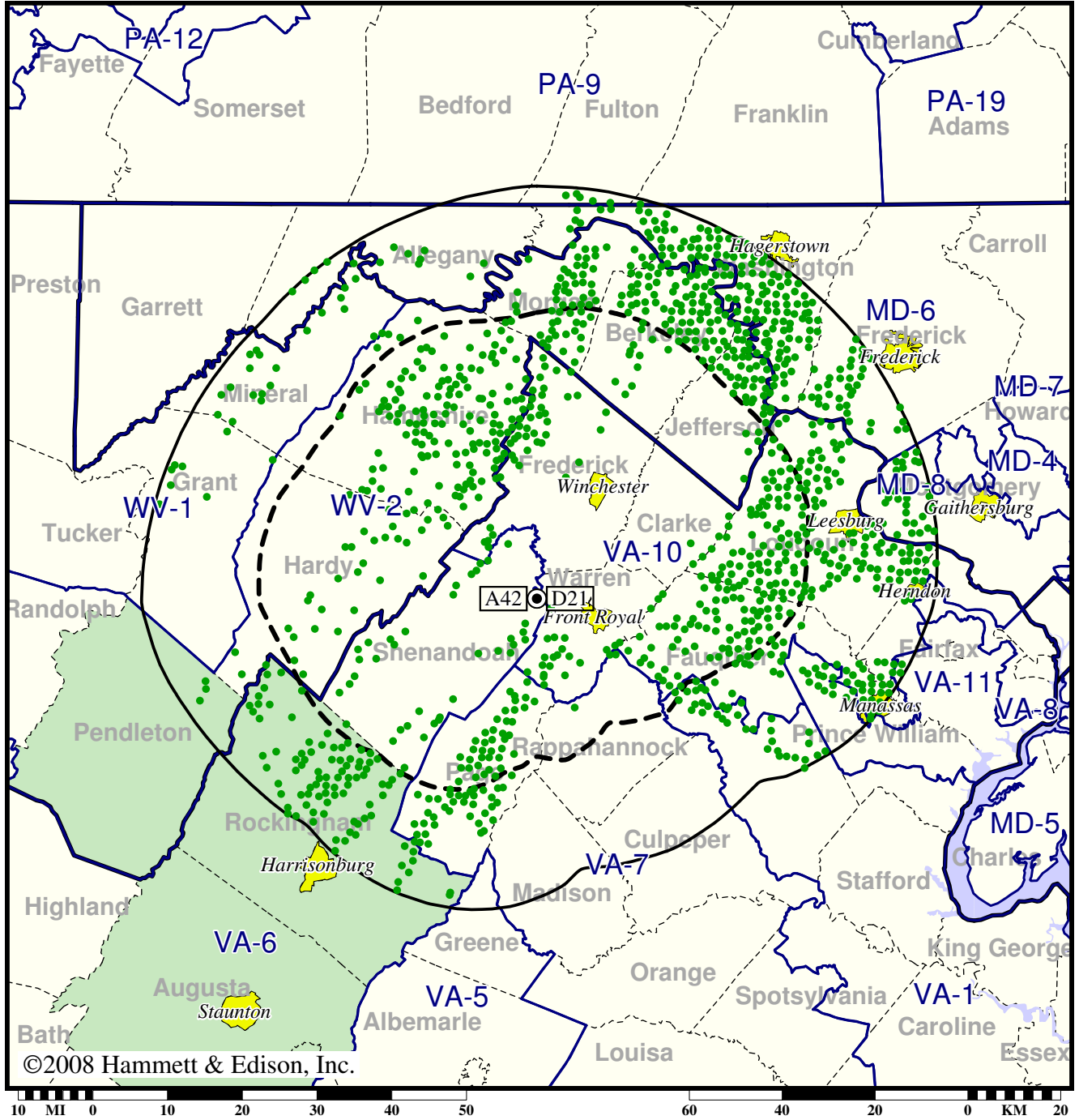
- Coverage gained after DTV transition
- (no symbol) No change in coverage

TV Station WVPY • Analog Channel 42, DTV Channel 21 • Front Royal, VA

Expected Change In Coverage: Licensed Operation

Licensed (solid): 50.0 kW ERP at 400 m HAAT, Network: PBS  
vs. Analog (dashed): 141 kW ERP at 399 m HAAT, Network: PBS

Market: Harrisonburg, VA



- Coverage gained after DTV transition
- (no symbol) No change in coverage