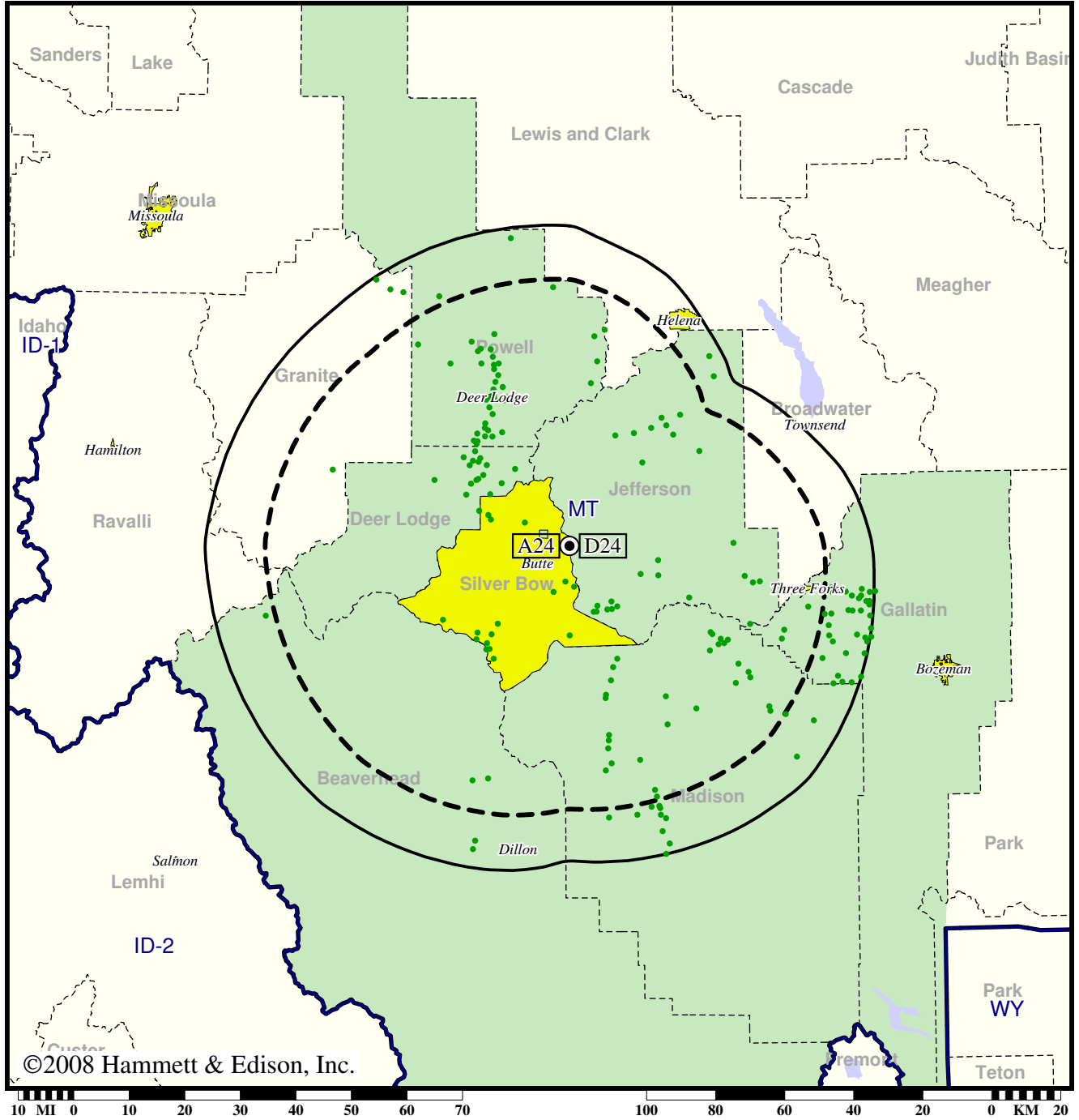


TV Station KBTZ • Analog Channel 24, DTV Channel 24 • Butte, MT

Expected Change In Coverage: Granted Construction Permit

CP (solid): 50.0 kW ERP at 570 m HAAT, Network: Fox  
vs. Analog (dashed): 330 kW ERP at 570 m HAAT, Network: Fox

Market: Butte-Bozeman, MT



©2008 Hammett & Edison, Inc.

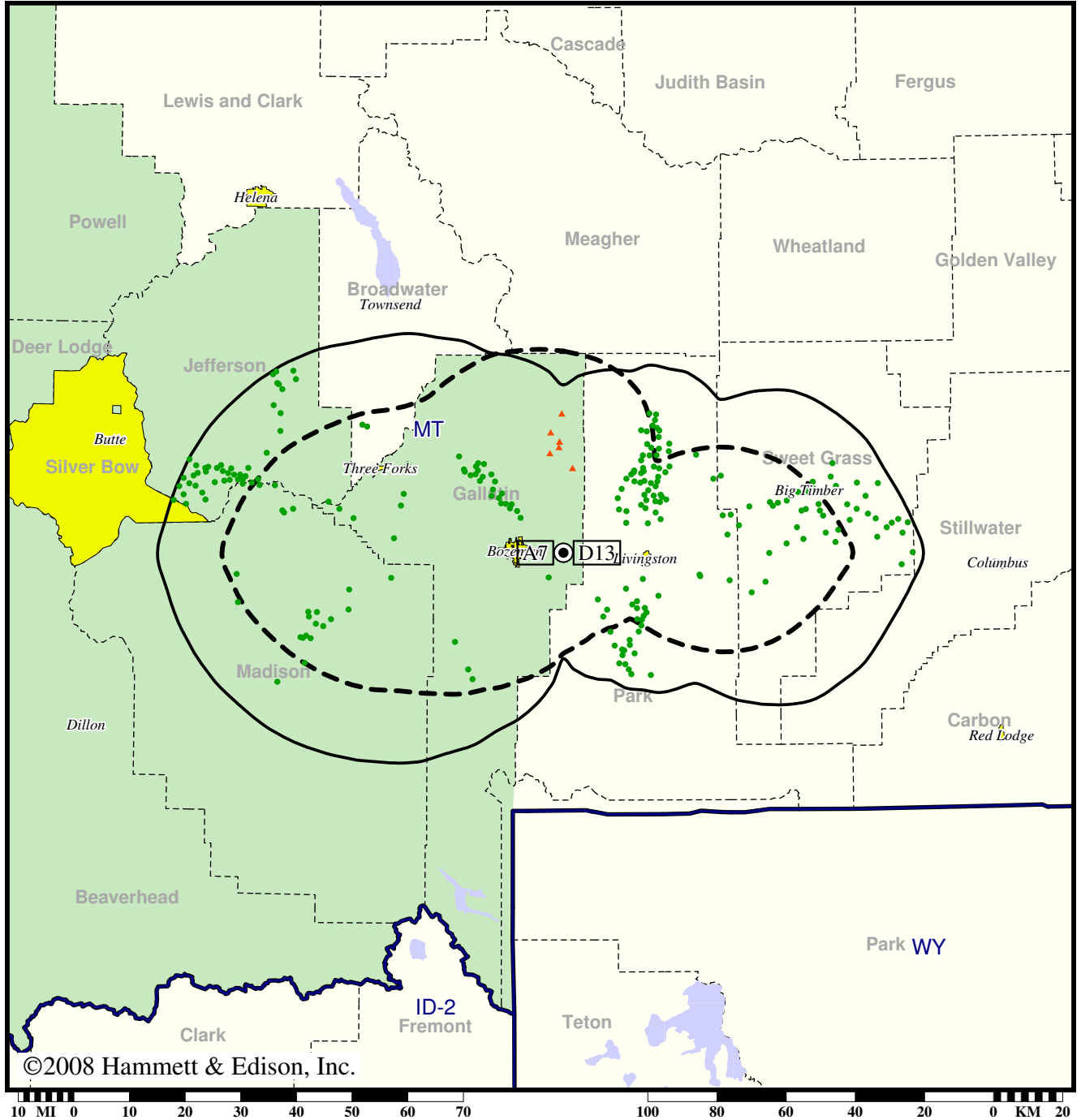
- Coverage gained after DTV transition
- (no symbol) No change in coverage

TV Station KBZK • Analog Channel 7, DTV Channel 13 • Bozeman, MT

Expected Change In Coverage: Licensed Operation

Licensed (solid): 18.9 kW ERP at 271 m HAAT, Network: CBS  
vs. Analog (dashed): 43.7 kW ERP at 249 m HAAT, Network: CBS

Market: Butte-Bozeman, MT



©2008 Hammett & Edison, Inc.

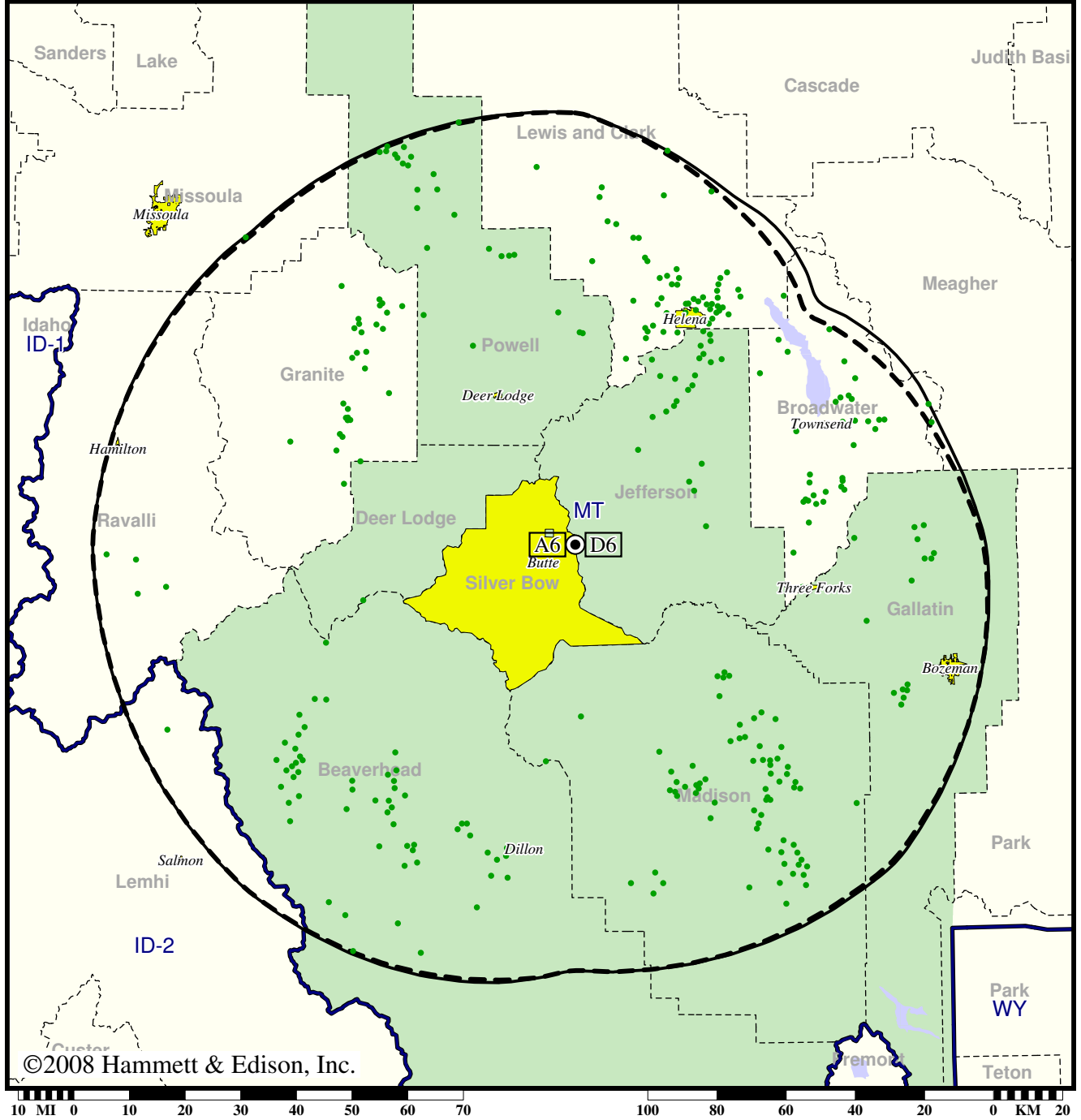
- Coverage gained after DTV transition
- (no symbol) No change in coverage
- ▲ Coverage lost after DTV transition

TV Station KTVM • Analog Channel 6, DTV Channel 6 • Butte, MT

Expected Change In Coverage: Granted Construction Permit

CP (solid): 11.2 kW ERP at 591 m HAAT, Network: NBC  
vs. Analog (dashed): 100 kW ERP at 591 m HAAT, Network: NBC

Market: Butte-Bozeman, MT



©2008 Hammett & Edison, Inc.

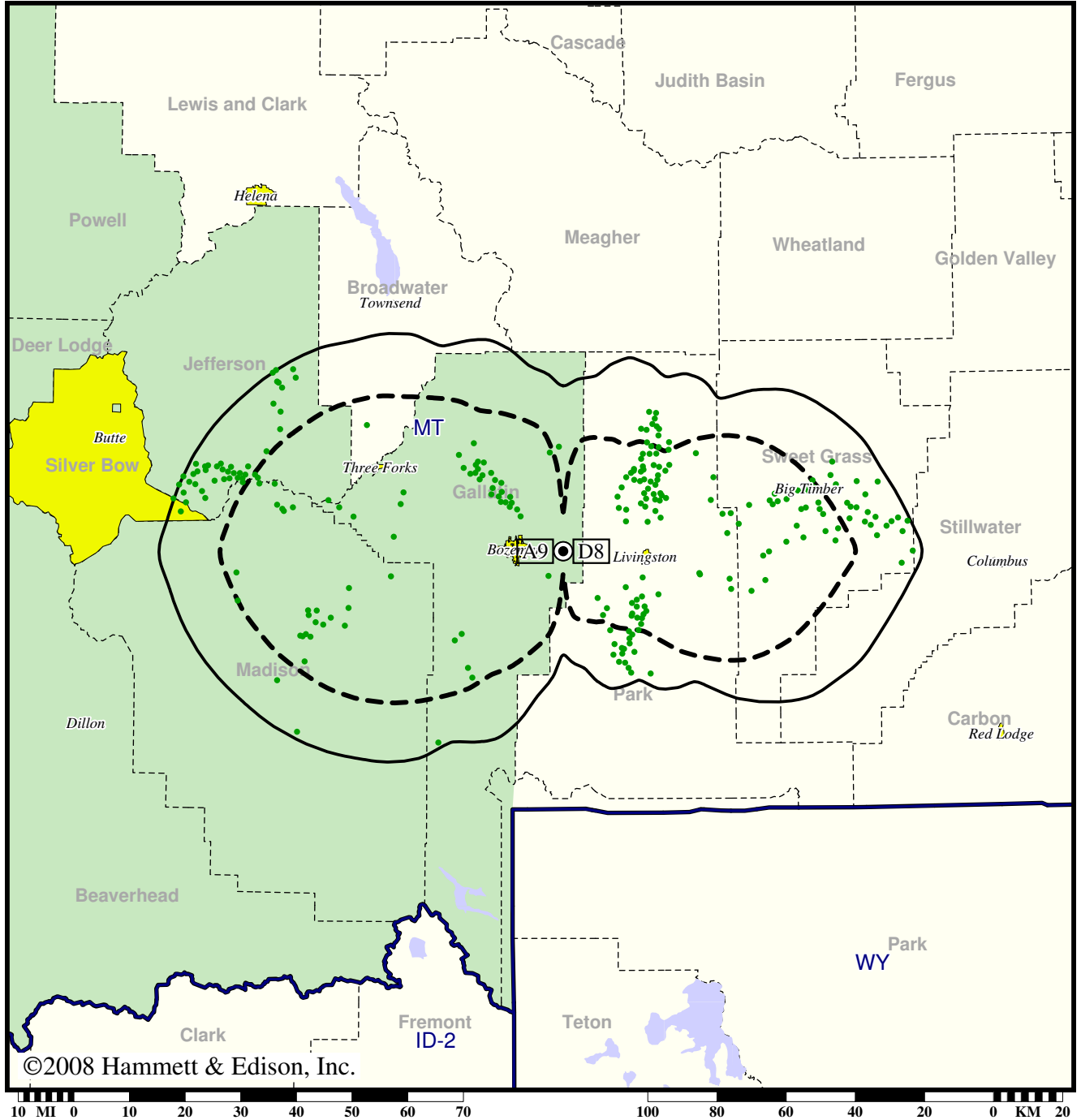
- Coverage gained after DTV transition
- (no symbol) No change in coverage

TV Station KUSM • Analog Channel 9, DTV Channel 8 • Bozeman, MT

Expected Change In Coverage: Licensed Operation

Licensed (solid): 17.9 kW ERP at 271 m HAAT, Network: PBS  
vs. Analog (dashed): 44.0 kW ERP at 277 m HAAT, Network: PBS

Market: Butte-Bozeman, MT



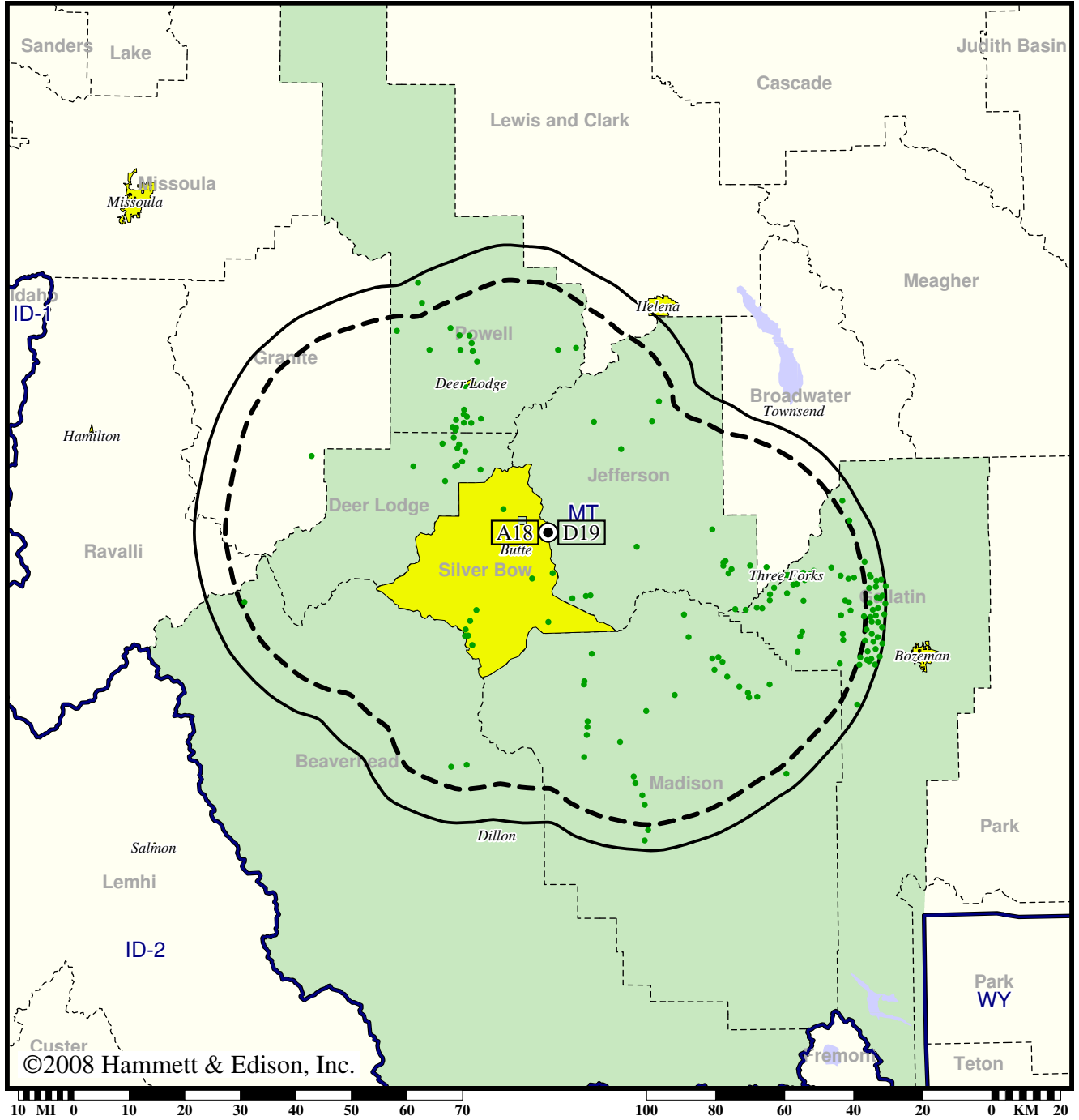
- Coverage gained after DTV transition
- (no symbol) No change in coverage

TV Station KWYB • Analog Channel 18, DTV Channel 19 • Butte, MT

Expected Change In Coverage: Post-Transition Appendix B Facility

Appendix B (solid): 125 kW ERP at 585 m HAAT, Network: ABC  
vs. Analog (dashed): 1780 kW ERP at 585 m HAAT, Network: ABC

Market: Butte-Bozeman, MT



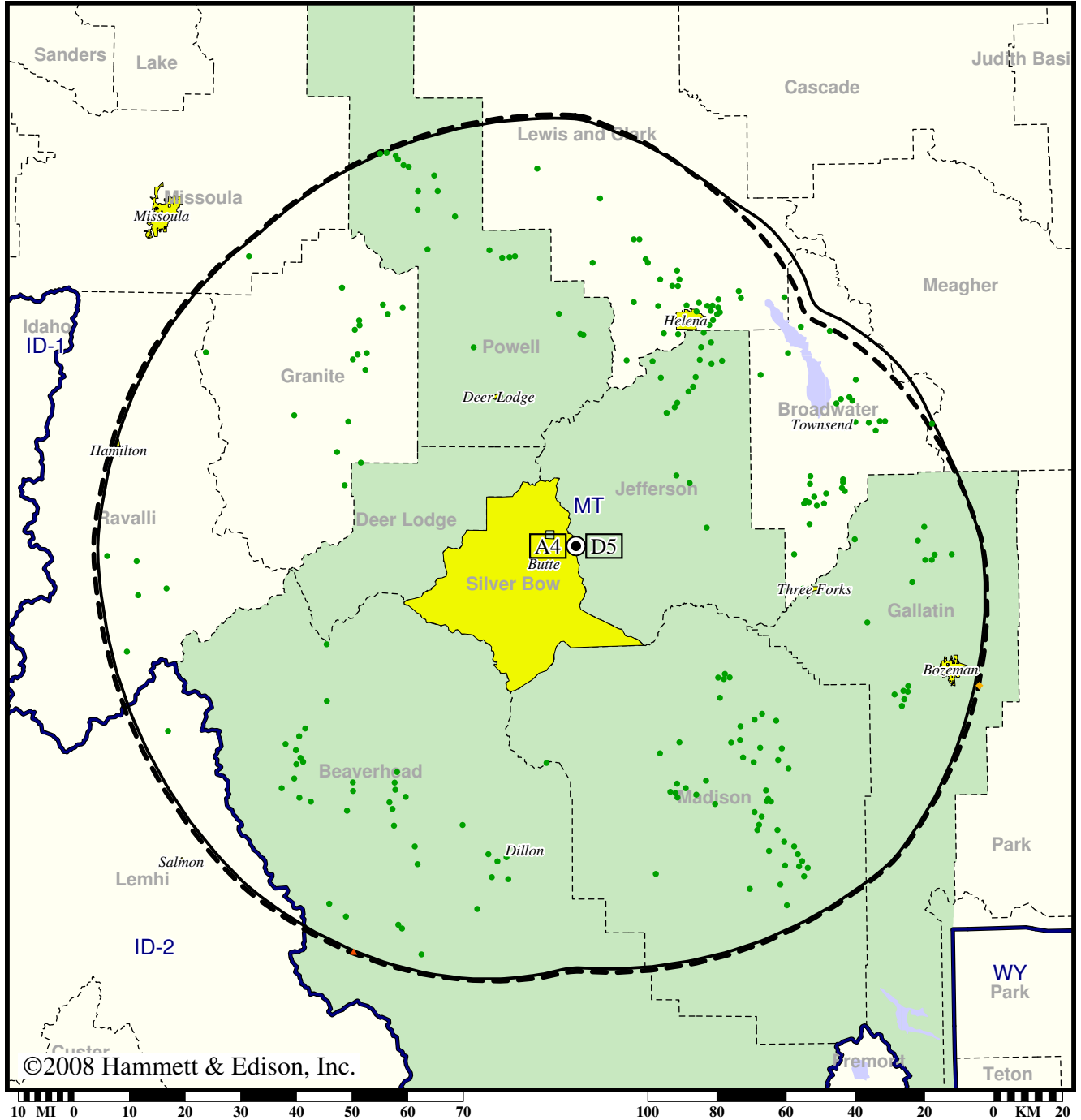
● Coverage gained after DTV transition  
(no symbol) No change in coverage

Station KXLF-TV • Analog Channel 4, DTV Channel 5 • Butte, MT

Expected Change In Coverage: Granted Construction Permit

CP (solid): 10.0 kW ERP at 588 m HAAT, Network: CBS  
vs. Analog (dashed): 100 kW ERP at 576 m HAAT, Network: CBS

Market: Butte-Bozeman, MT



- Coverage gained after DTV transition
- (no symbol) No change in coverage
- ◆ Coverage lost but still served by same network
- ▲ Coverage lost and no other service by same network