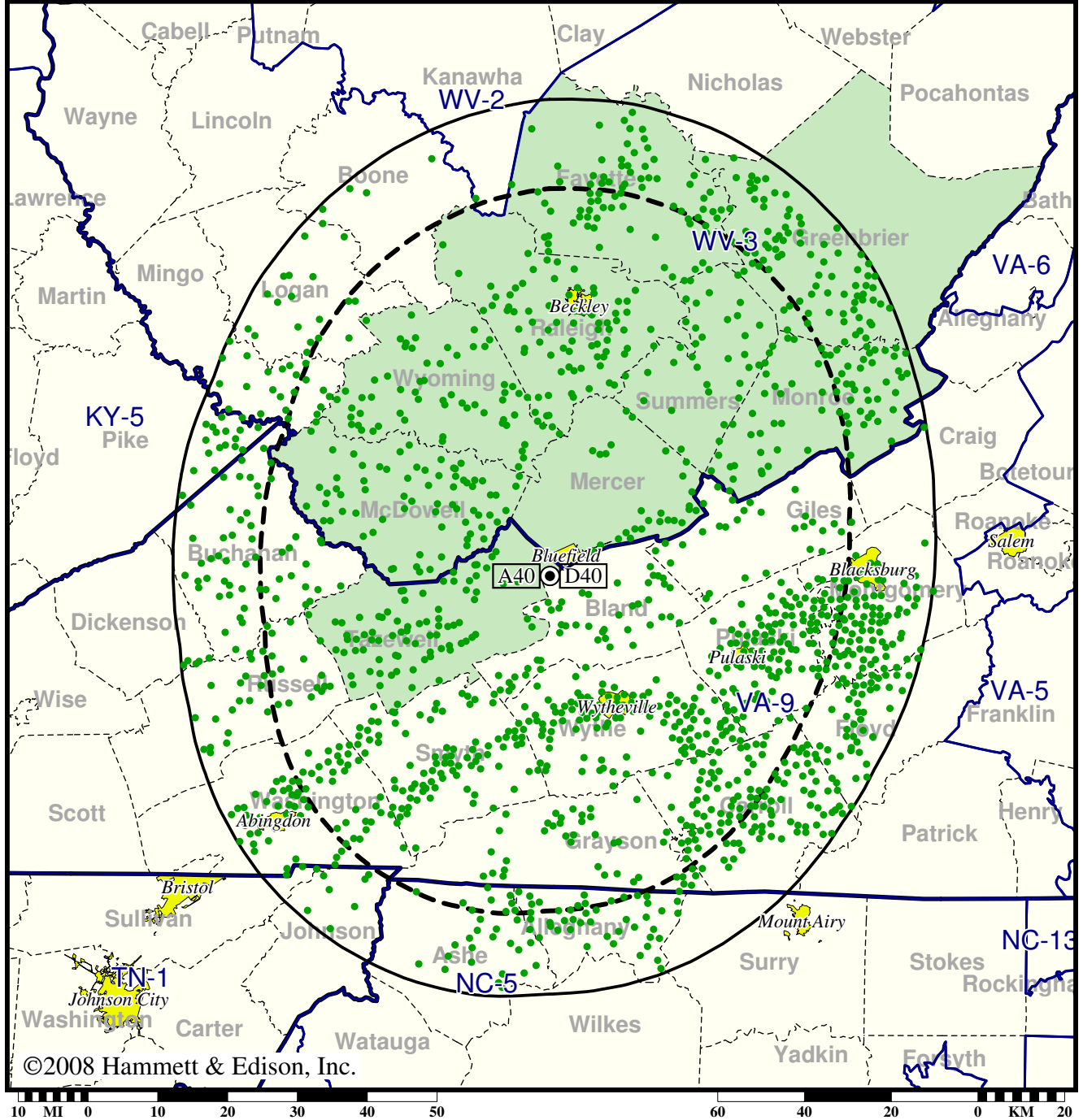


TV Station WLFB • Analog Channel 40, DTV Channel 40 • Bluefield, WV

Expected Change In Coverage: Granted Construction Permit

CP (solid): 1000 kW ERP at 391 m HAAT  
vs. Analog (dashed): 2880 kW ERP at 391 m HAAT

Market: Bluefield-Beckley-Oak Hill, WV



©2008 Hammett & Edison, Inc.

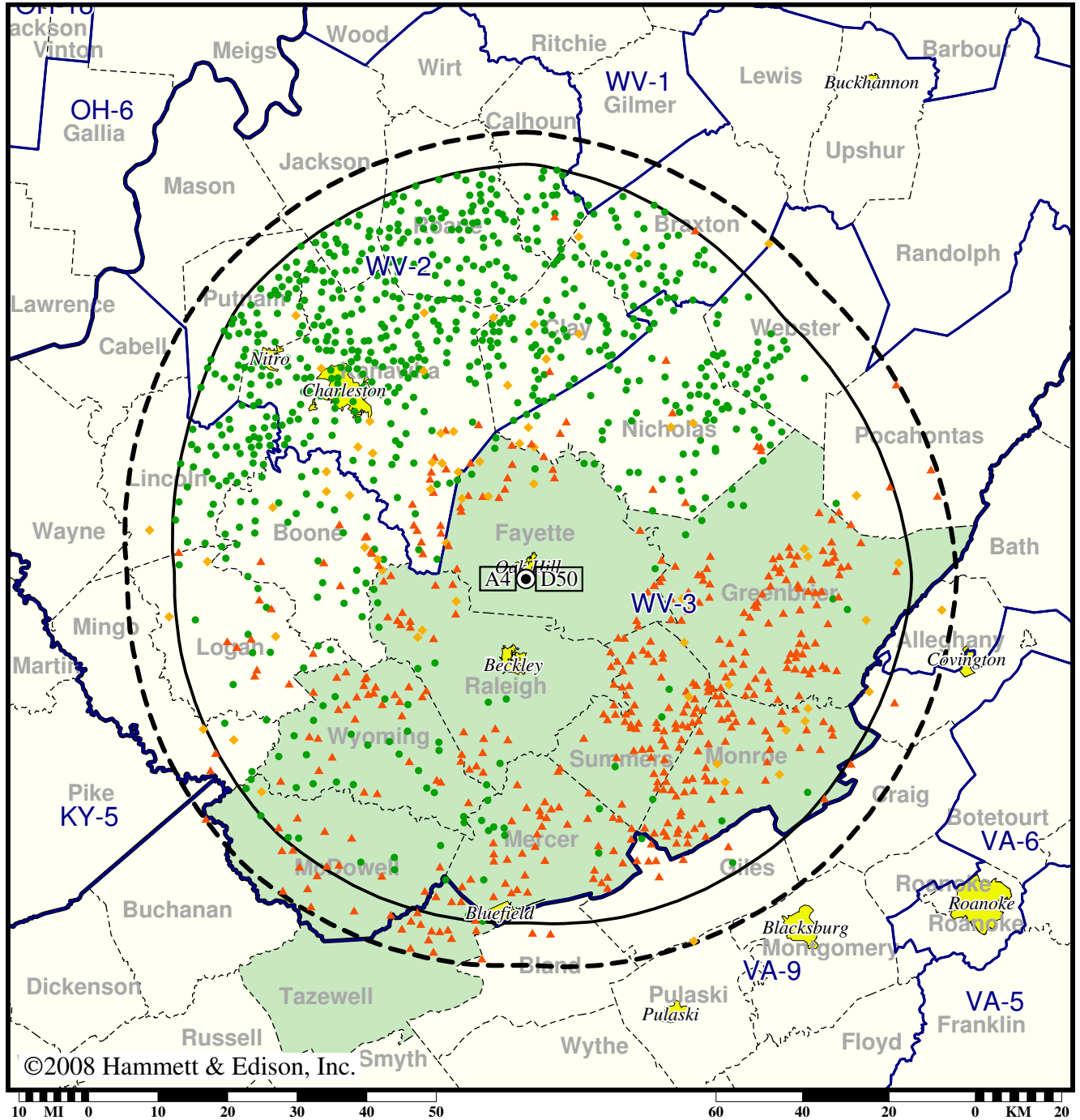
- Coverage gained after DTV transition
- (no symbol) No change in coverage

Station WOAY-TV • Analog Channel 4, DTV Channel 50 • Oak Hill, WV

Expected Change In Coverage: Granted Construction Permit

CP (solid): 1000 kW ERP at 237 m HAAT, Network: ABC  
vs. Analog (dashed): 100 kW ERP at 226 m HAAT, Network: ABC

Market: Bluefield-Beckley-Oak Hill, WV



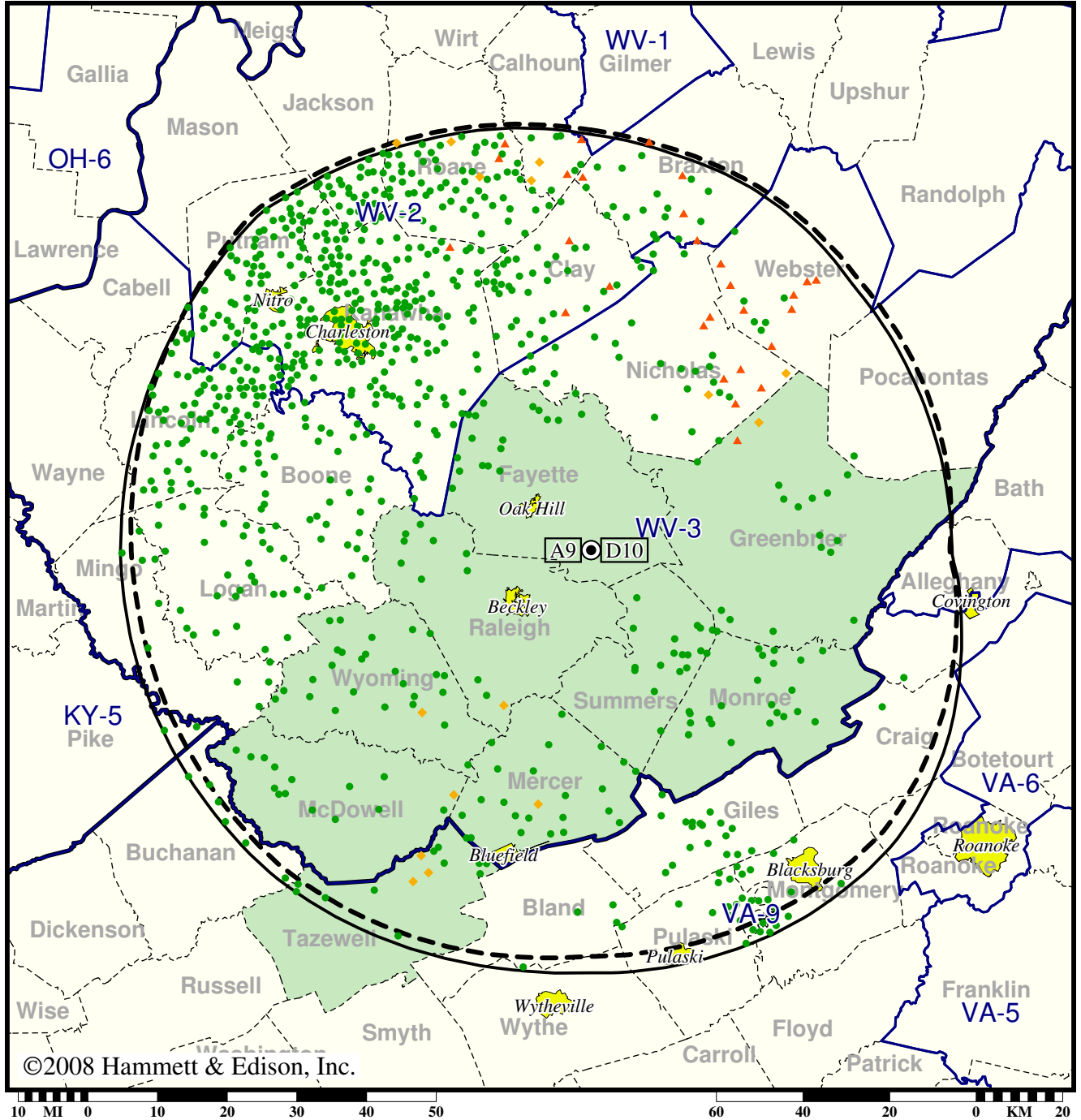
- Coverage gained after DTV transition
- (no symbol) No change in coverage
- ◆ Coverage lost but still served by same network
- ▲ Coverage lost and no other service by same network

Station WSWP-TV • Analog Channel 9, DTV Channel 10 • Grandview, WV

Expected Change In Coverage: Granted Construction Permit

CP (solid): 24.0 kW ERP at 318 m HAAT, Network: PBS  
vs. Analog (dashed): 316 kW ERP at 305 m HAAT, Network: PBS

Market: Bluefield-Beckley-Oak Hill, WV



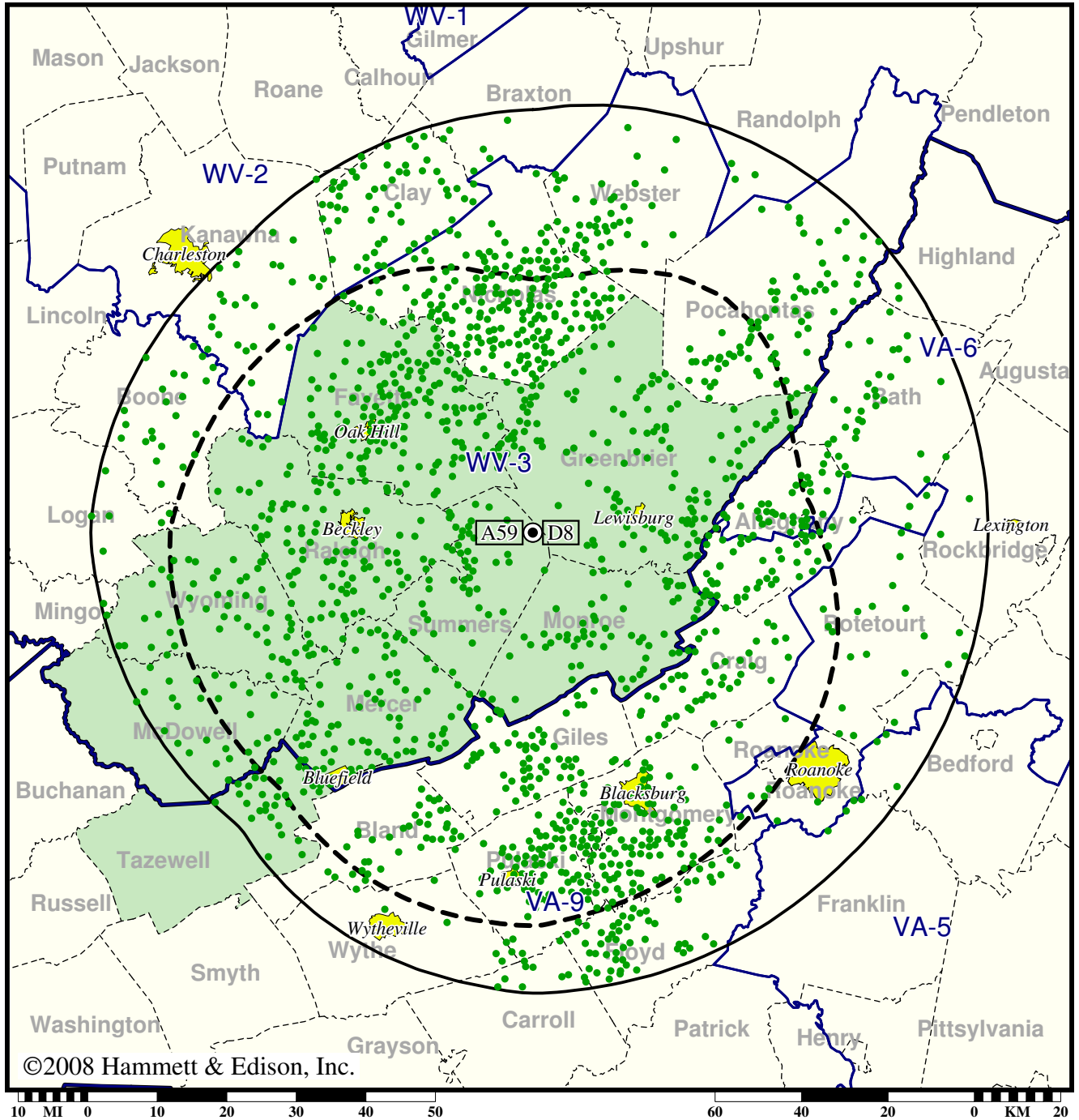
- Coverage gained after DTV transition
- (no symbol) No change in coverage
- ◆ Coverage lost but still served by same network
- ▲ Coverage lost and no other service by same network

Station WVNS-TV • Analog Channel 59, DTV Channel 8 • Lewisburg, WV

Expected Change In Coverage: Post-Transition Appendix B Facility

Appendix B (solid): 3.68 kW ERP at 577 m HAAT, Network: CBS  
vs. Analog (dashed): 1910 kW ERP at 568 m HAAT, Network: CBS

Market: Bluefield-Beckley-Oak Hill, WV



©2008 Hammett & Edison, Inc.

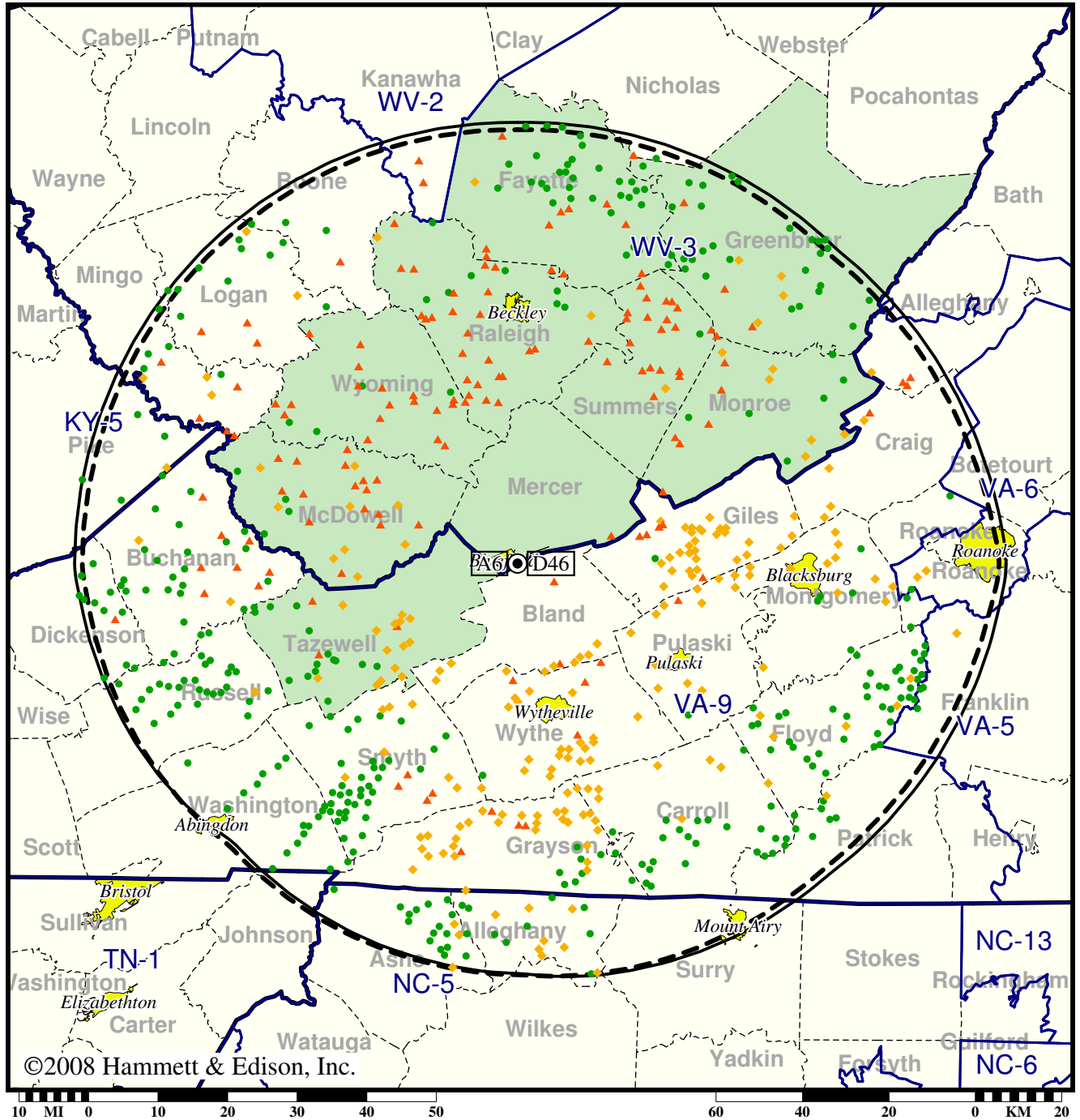
- Coverage gained after DTV transition
- (no symbol) No change in coverage

TV Station WVVA • Analog Channel 6, DTV Channel 46 • Bluefield, WV

Expected Change In Coverage: Post-Transition Appendix B Facility

Appendix B (solid): 1000 kW ERP at 372 m HAAT, Network: NBC  
vs. Analog (dashed): 50.1 kW ERP at 372 m HAAT, Network: NBC

Market: Bluefield-Beckley-Oak Hill, WV



©2008 Hammett & Edison, Inc.

- Coverage gained after DTV transition
- (no symbol) No change in coverage
- ◆ Coverage lost but still served by same network
- ▲ Coverage lost and no other service by same network