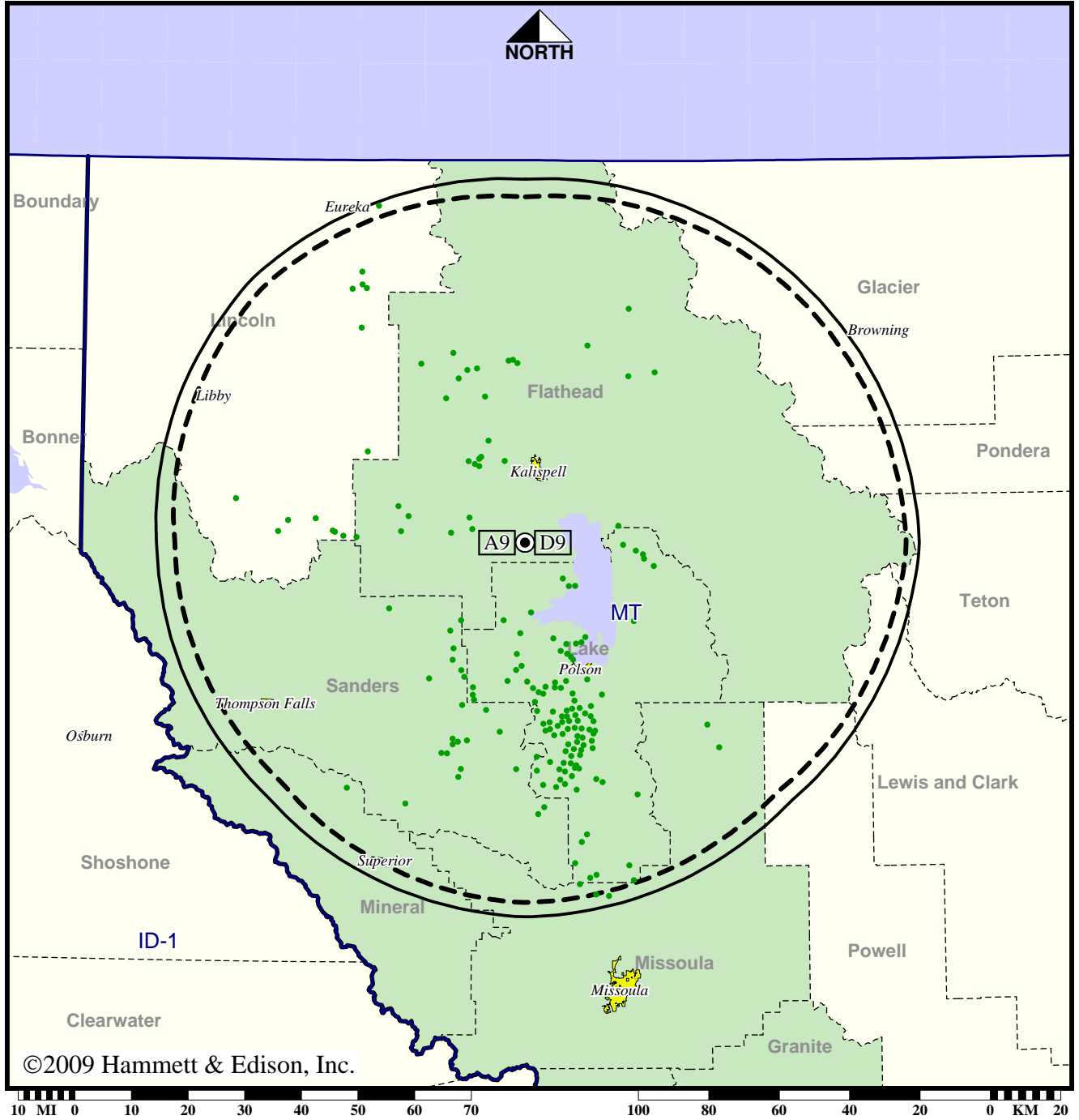


Station KCFW-TV • Analog Channel 9, DTV Channel 9 • Kalispell, MT

Expected Operation on June 13: Granted Construction Permit

**Digital CP (solid): 2.50 kW ERP at 850 m HAAT, Network: NBC
vs. Analog (dashed): 26.3 kW ERP at 850 m HAAT, Network: NBC**

Market: Missoula, MT



©2009 Hammett & Edison, Inc.

● Coverage gained after DTV transition
No symbol = no change in coverage

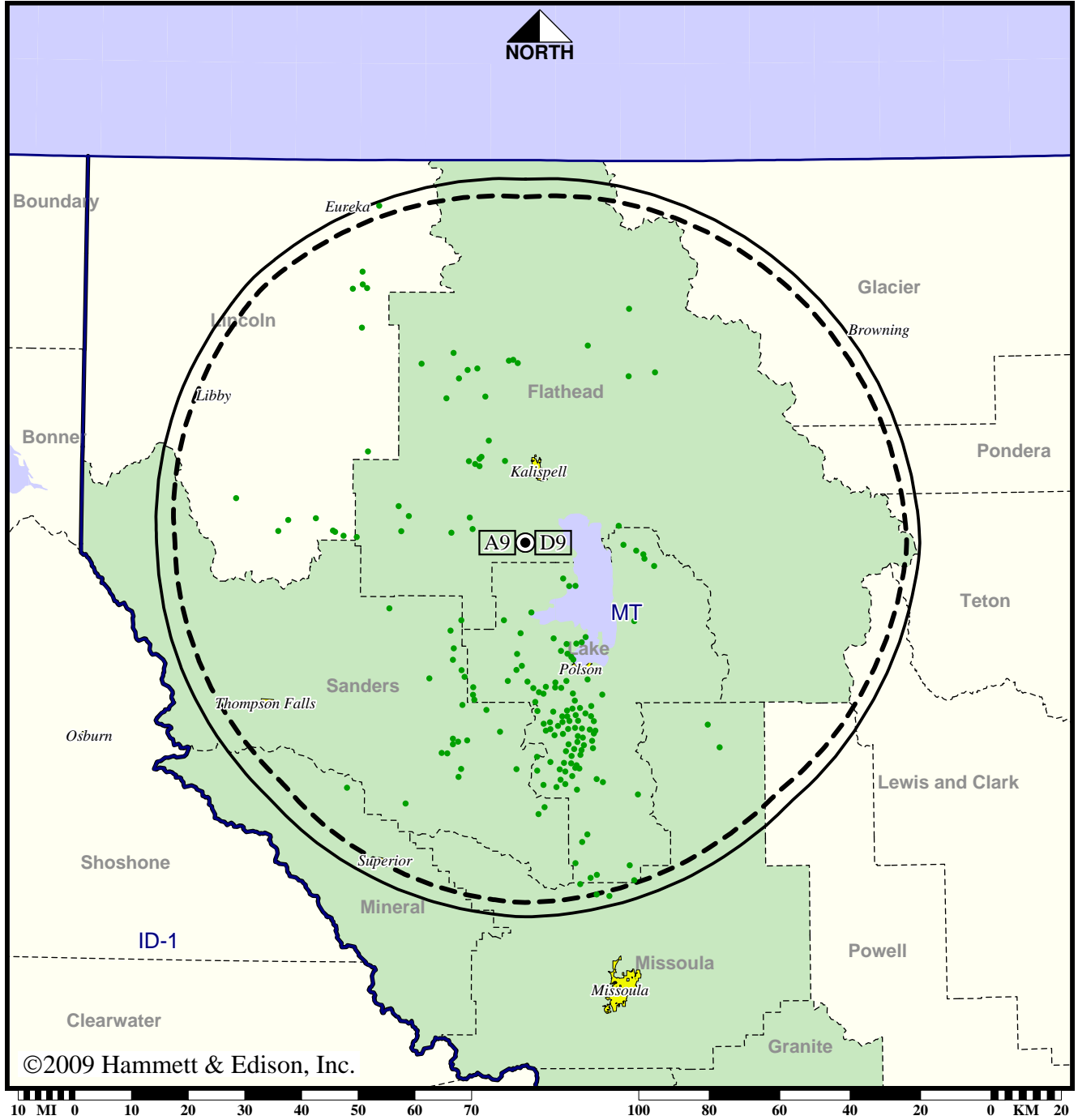
Analog service	89,849 persons
Digital service	97,804
Analog loss	0
Digital gain	7,955
Net gain	7,955

Station KCFW-TV • Analog Channel 9, DTV Channel 9 • Kalispell, MT

Approved Post-Transition Operation: Granted Construction Permit

Digital CP (solid): 2.50 kW ERP at 850 m HAAT, Network: NBC
 vs. Analog (dashed): 26.3 kW ERP at 850 m HAAT, Network: NBC

Market: Missoula, MT



©2009 Hammett & Edison, Inc.

● Coverage gained after DTV transition
 No symbol = no change in coverage

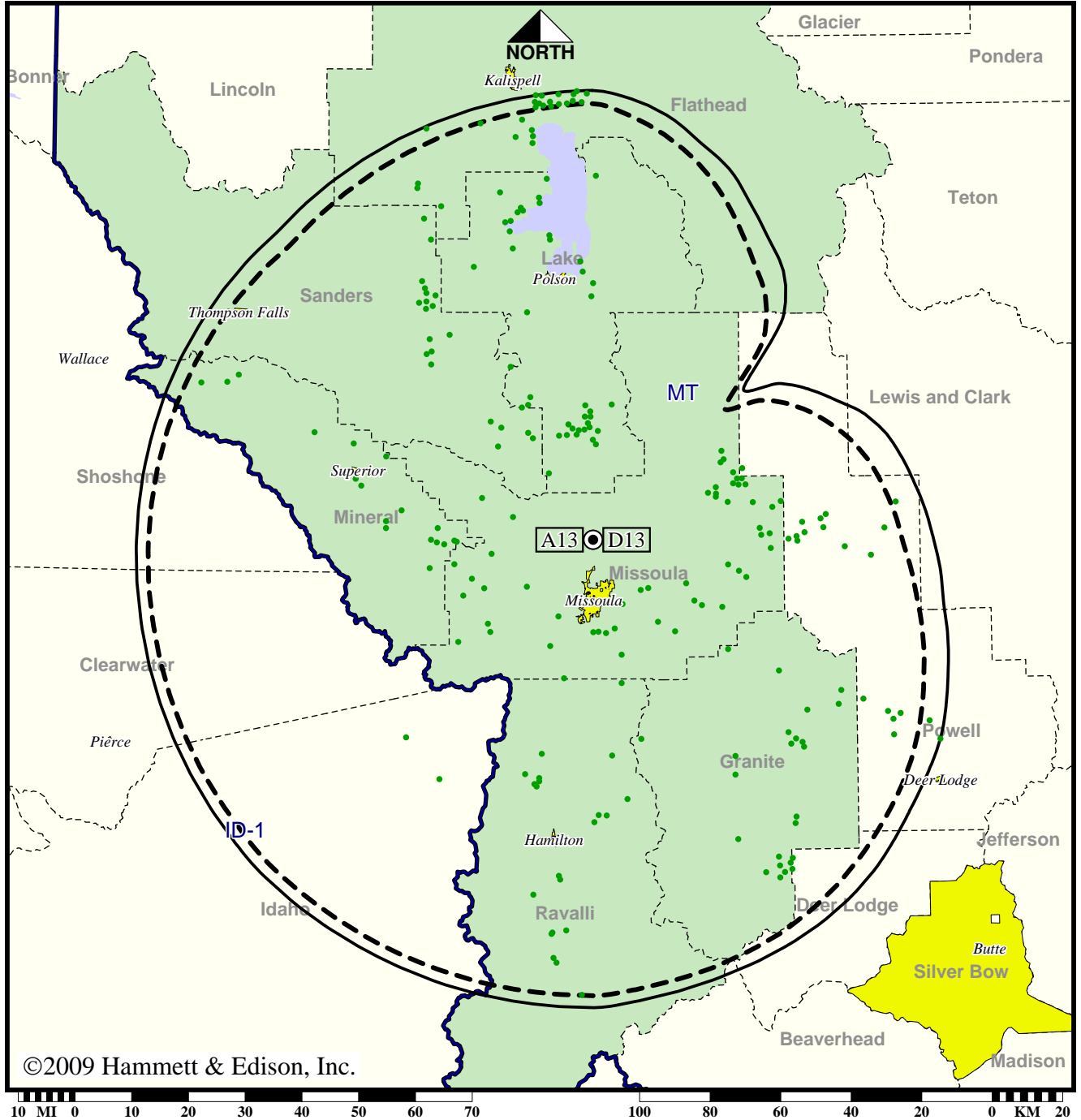
Analog service	89,849 persons
Digital service	97,804
Analog loss	0
Digital gain	7,955
Net gain	7,955

Station KECI-TV • Analog Channel 13, DTV Channel 13 • Missoula, MT

Expected Operation on June 13: Granted Construction Permit

**Digital CP (solid): 26.7 kW ERP at 610 m HAAT, Network: NBC
vs. Analog (dashed): 229 kW ERP at 610 m HAAT, Network: NBC**

Market: Missoula, MT



©2009 Hammett & Edison, Inc.

● Coverage gained after DTV transition
No symbol = no change in coverage

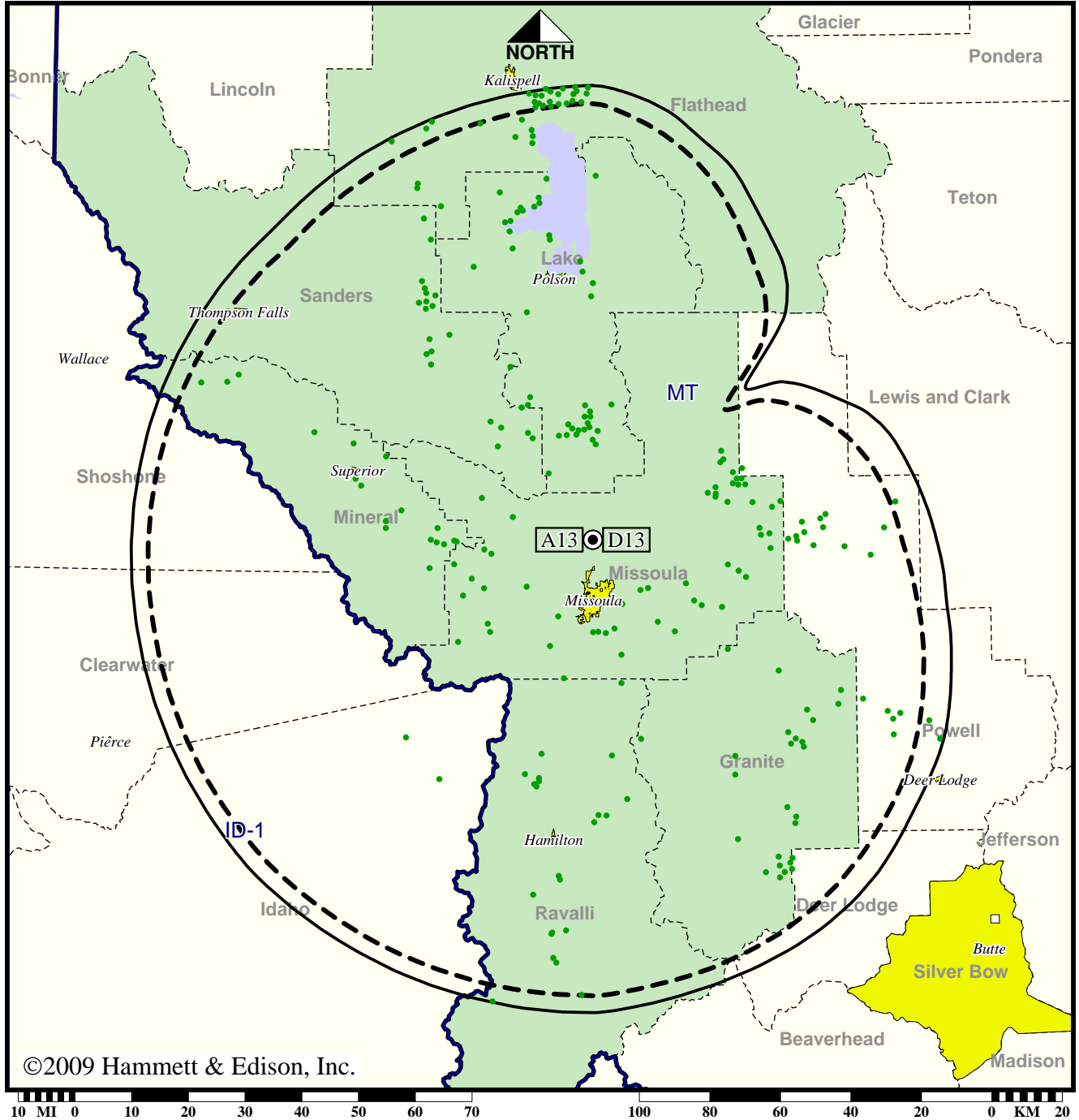
Analog service	150,572 persons
Digital service	159,114
Analog loss	0
Digital gain	8,542
Net gain	8,542

Station KECI-TV • Analog Channel 13, DTV Channel 13 • Missoula, MT

Approved Post-Transition Operation: Granted Construction Permit

Digital CP (solid): 30.0 kW ERP at 610 m HAAT, Network: NBC
 vs. Analog (dashed): 229 kW ERP at 610 m HAAT, Network: NBC

Market: Missoula, MT



©2009 Hammett & Edison, Inc.

● Coverage gained after DTV transition
 No symbol = no change in coverage

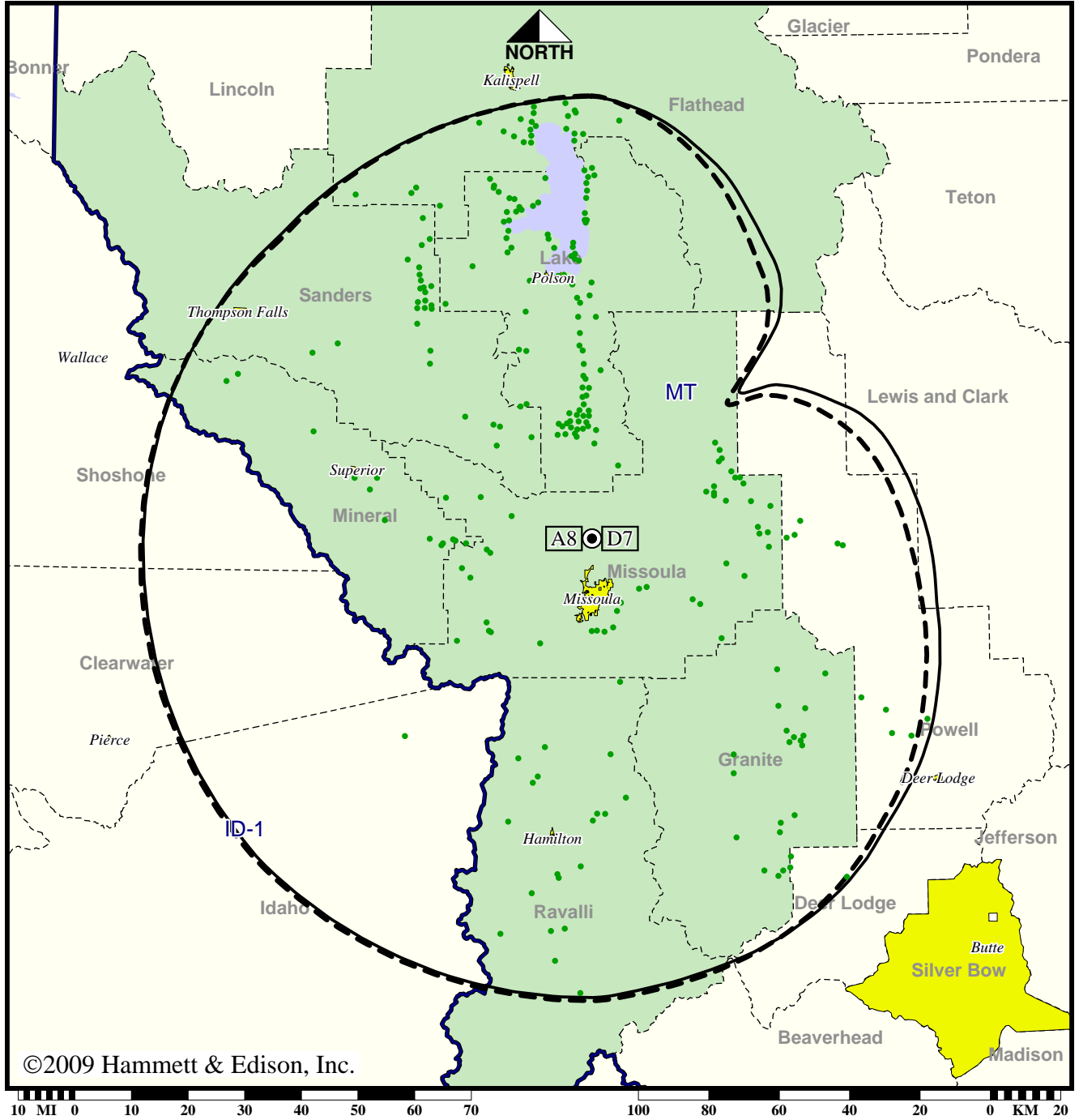
Analog service	150,572 persons
Digital service	161,174
Analog loss	0
Digital gain	10,602
Net gain	10,602

Station KPAX-TV • Analog Channel 8, DTV Channel 7 • Missoula, MT

Expected Operation on June 13: Granted Construction Permit

**Digital CP (solid): 22.5 kW ERP at 654 m HAAT, Network: CBS
vs. Analog (dashed): 275 kW ERP at 655 m HAAT, Network: CBS**

Market: Missoula, MT



©2009 Hammett & Edison, Inc.

- Coverage gained after DTV transition
- No symbol = no change in coverage

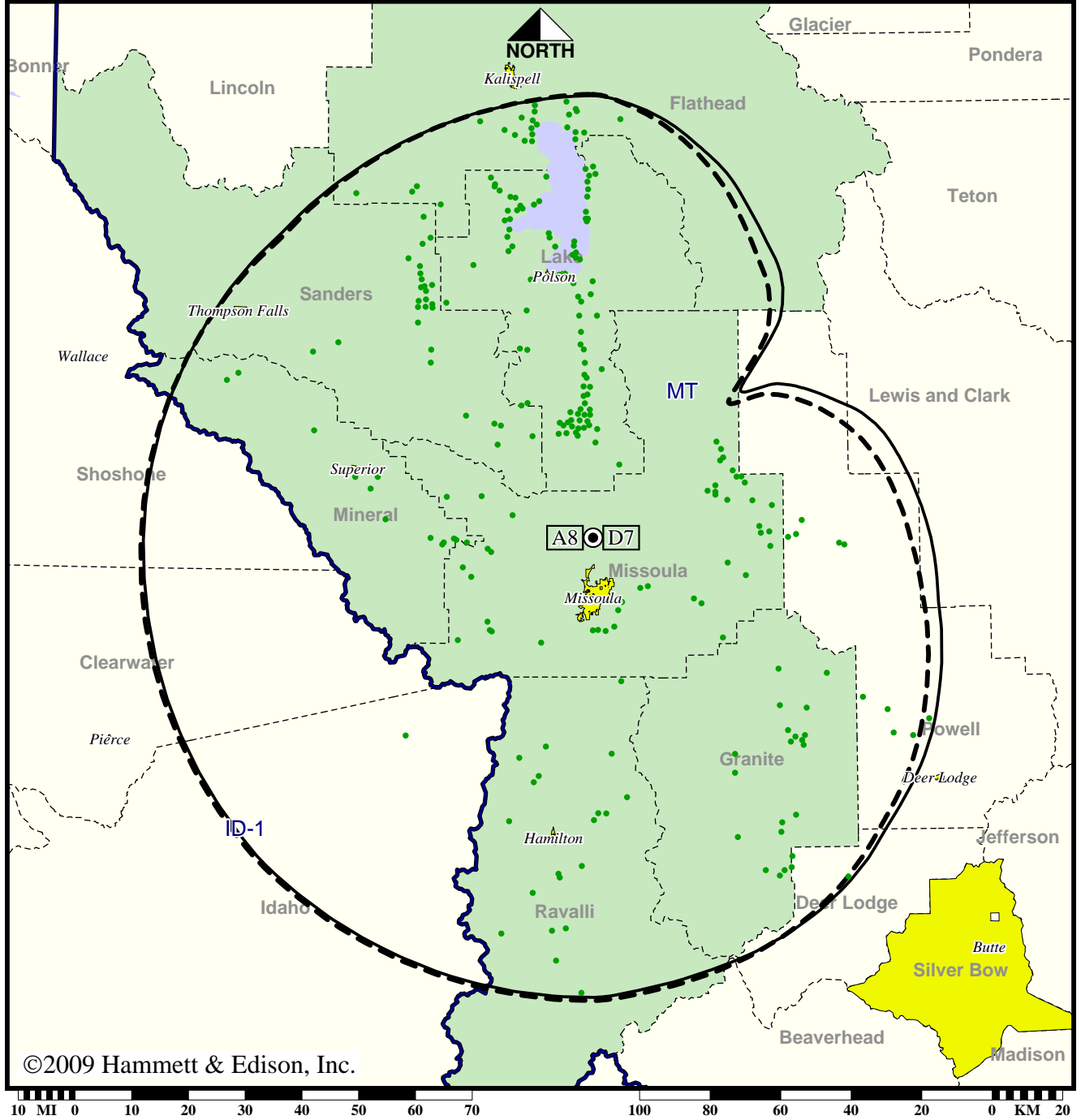
Analog service	147,650 persons
Digital service	160,568
Analog loss	0
Digital gain	12,918
Net gain	12,918

Station KPAX-TV • Analog Channel 8, DTV Channel 7 • Missoula, MT

Approved Post-Transition Operation: Granted Construction Permit

**Digital CP (solid): 22.5 kW ERP at 654 m HAAT, Network: CBS
vs. Analog (dashed): 275 kW ERP at 655 m HAAT, Network: CBS**

Market: Missoula, MT



● Coverage gained after DTV transition
No symbol = no change in coverage

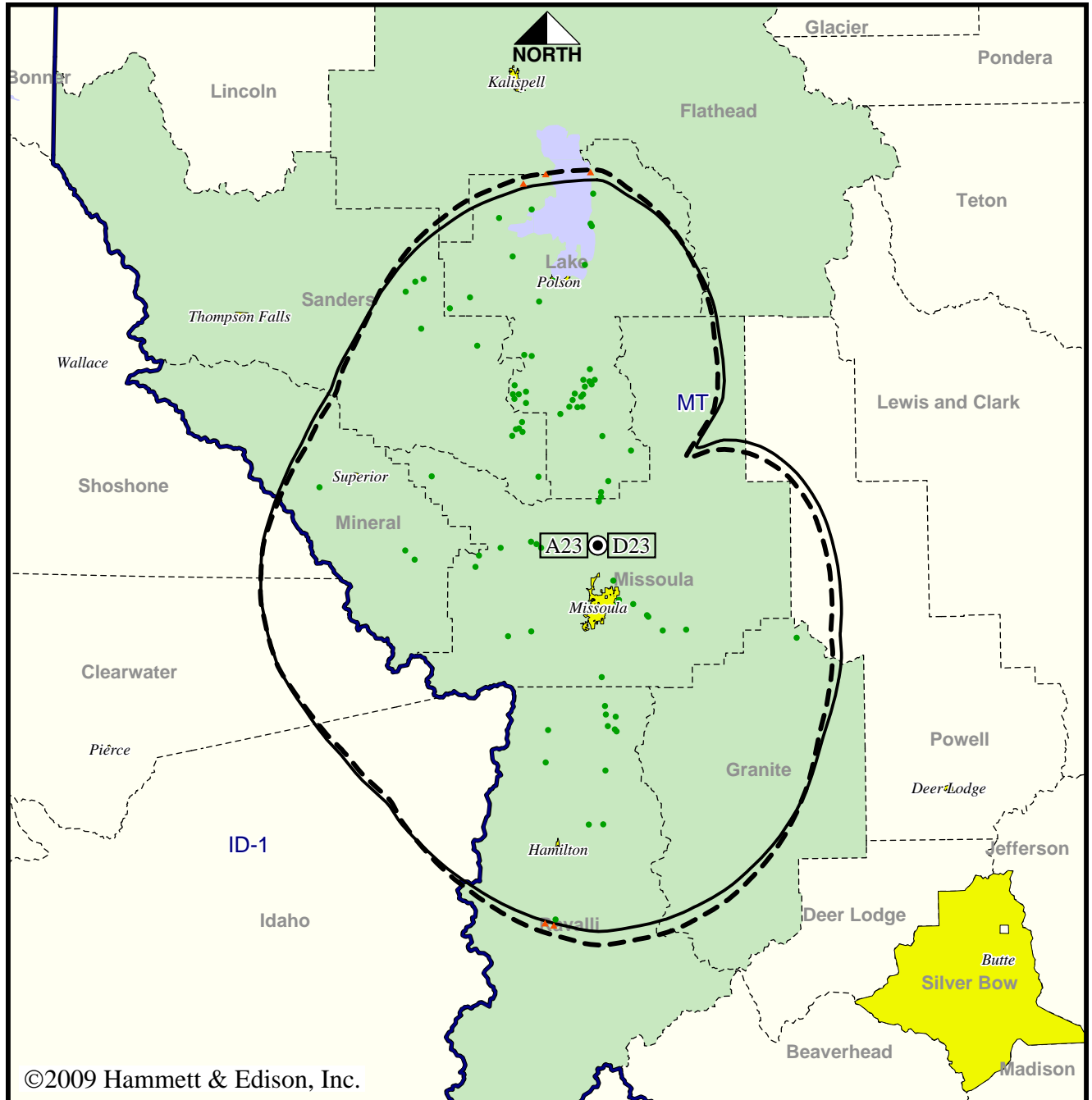
Analog service	147,650 persons
Digital service	160,568
Analog loss	0
Digital gain	12,918
Net gain	12,918

TV Station KTMF • Analog Channel 23, DTV Channel 23 • Missoula, MT

Expected Operation on June 13: Granted Construction Permit

**Digital CP (solid): 50.0 kW ERP at 642 m HAAT, Network: ABC
vs. Analog (dashed): 1820 kW ERP at 642 m HAAT, Network: ABC**

Market: Missoula, MT



©2009 Hammett & Edison, Inc.

- Coverage gained after DTV transition
- No symbol = no change in coverage
- ▲ Coverage lost after DTV transition

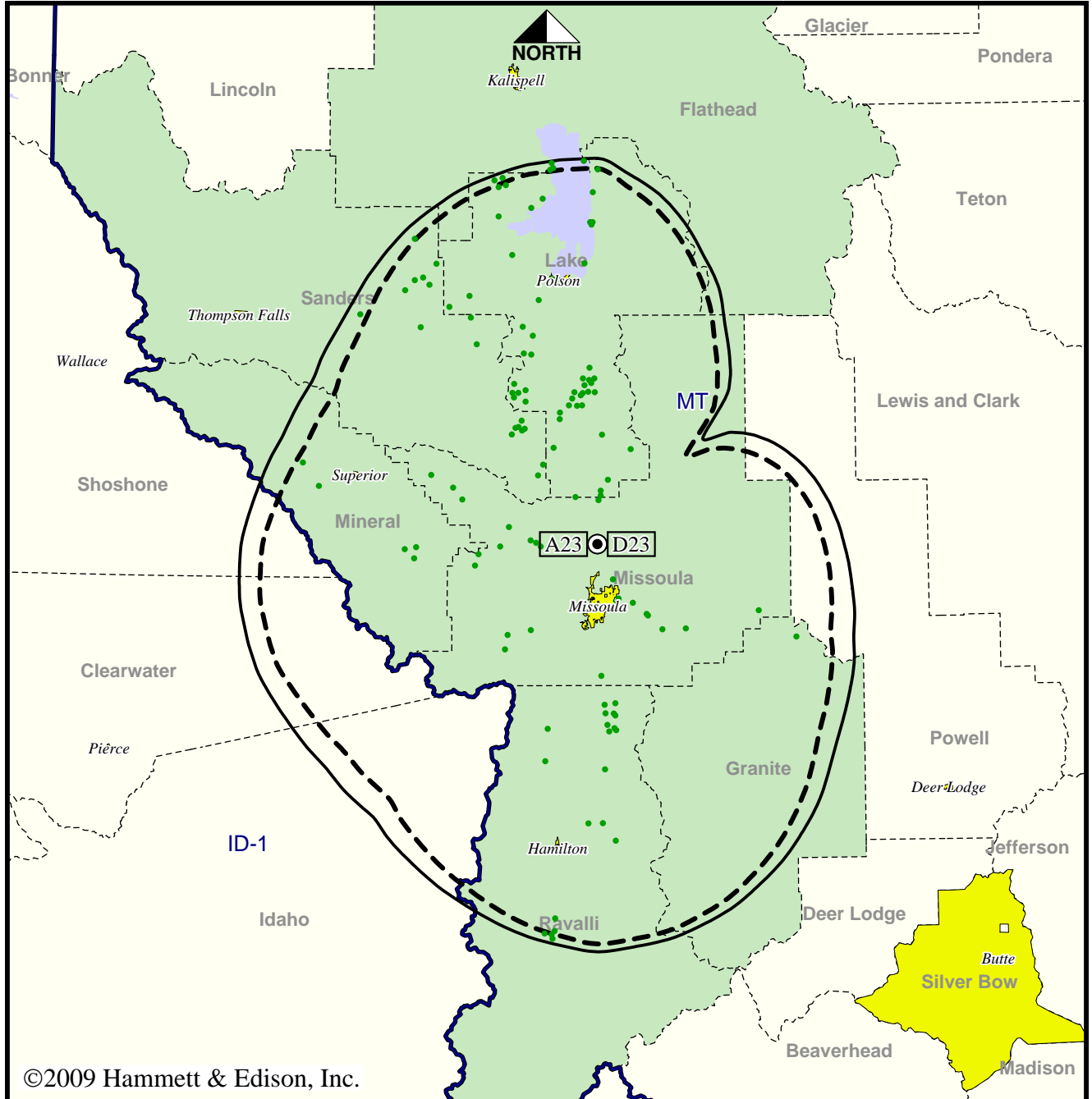
Analog service	128,719 persons
Digital service	134,647
Analog loss	306
Digital gain	6,234
Net gain	5,928

TV Station KTMF • Analog Channel 23, DTV Channel 23 • Missoula, MT

Approved Post-Transition Operation: Granted Construction Permit

**Digital CP (solid): 92.6 kW ERP at 642 m HAAT, Network: ABC
vs. Analog (dashed): 1820 kW ERP at 642 m HAAT, Network: ABC**

Market: Missoula, MT



©2009 Hammett & Edison, Inc.

● Coverage gained after DTV transition
No symbol = no change in coverage

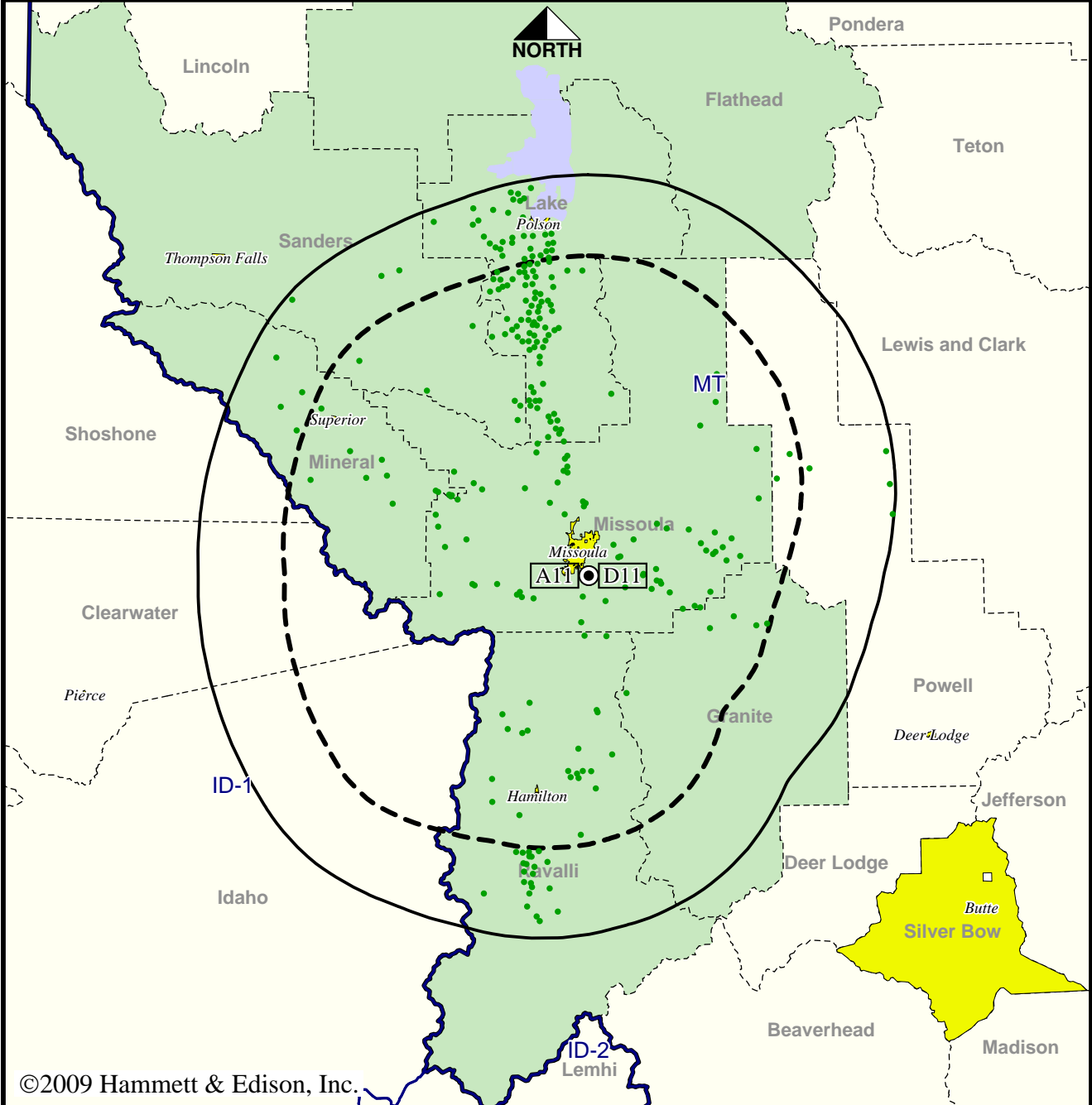
Analog service	128,719 persons
Digital service	139,207
Analog loss	0
Digital gain	10,488
Net gain	10,488

Station KUFM-TV • Analog Channel 11, DTV Channel 11 • Missoula, MT

Approved Post-Transition Operation: Granted Construction Permit

Digital CP (solid): 5.80 kW ERP at 634 m HAAT, Network: PBS
 vs. Analog (dashed): 9.06 kW ERP at 631 m HAAT, Network: PBS

Market: Missoula, MT



©2009 Hammett & Edison, Inc.



- Coverage gained after DTV transition
- No symbol = no change in coverage

Analog service	118,433 persons
Digital service	134,576
Analog loss	0
Digital gain	16,143
Net gain	16,143