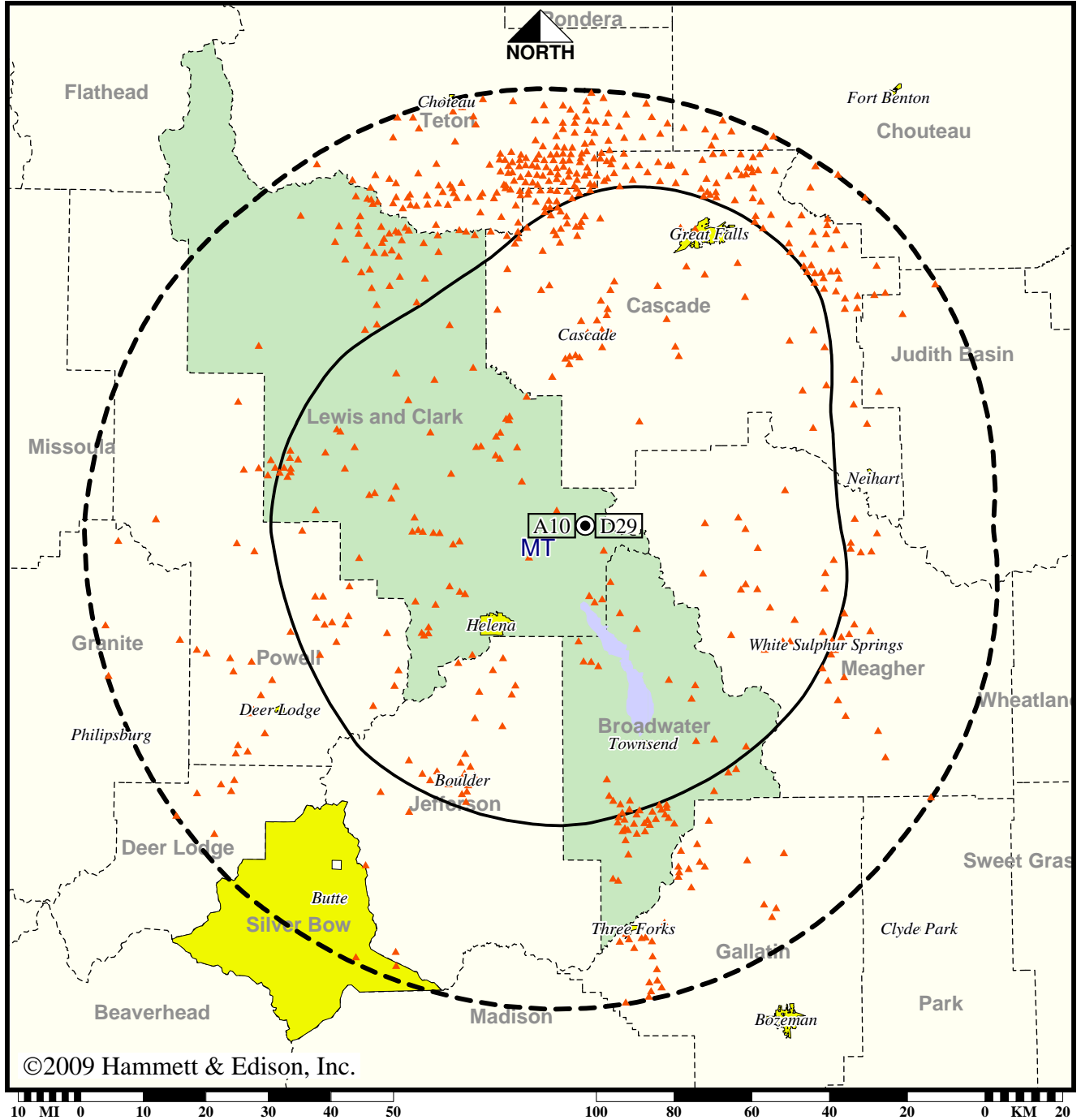


TV Station KMTF • Analog Channel 10, DTV Channel 29 • Helena, MT

Expected Operation on June 13: Granted Construction Permit

Digital CP (solid): 43.4 kW ERP at 697 m HAAT  
 vs. Analog (dashed): 217 kW ERP at 711 m HAAT

Market: Helena, MT



©2009 Hammett & Edison, Inc.

- No symbol = no change in coverage
- ▲ Coverage lost after DTV transition

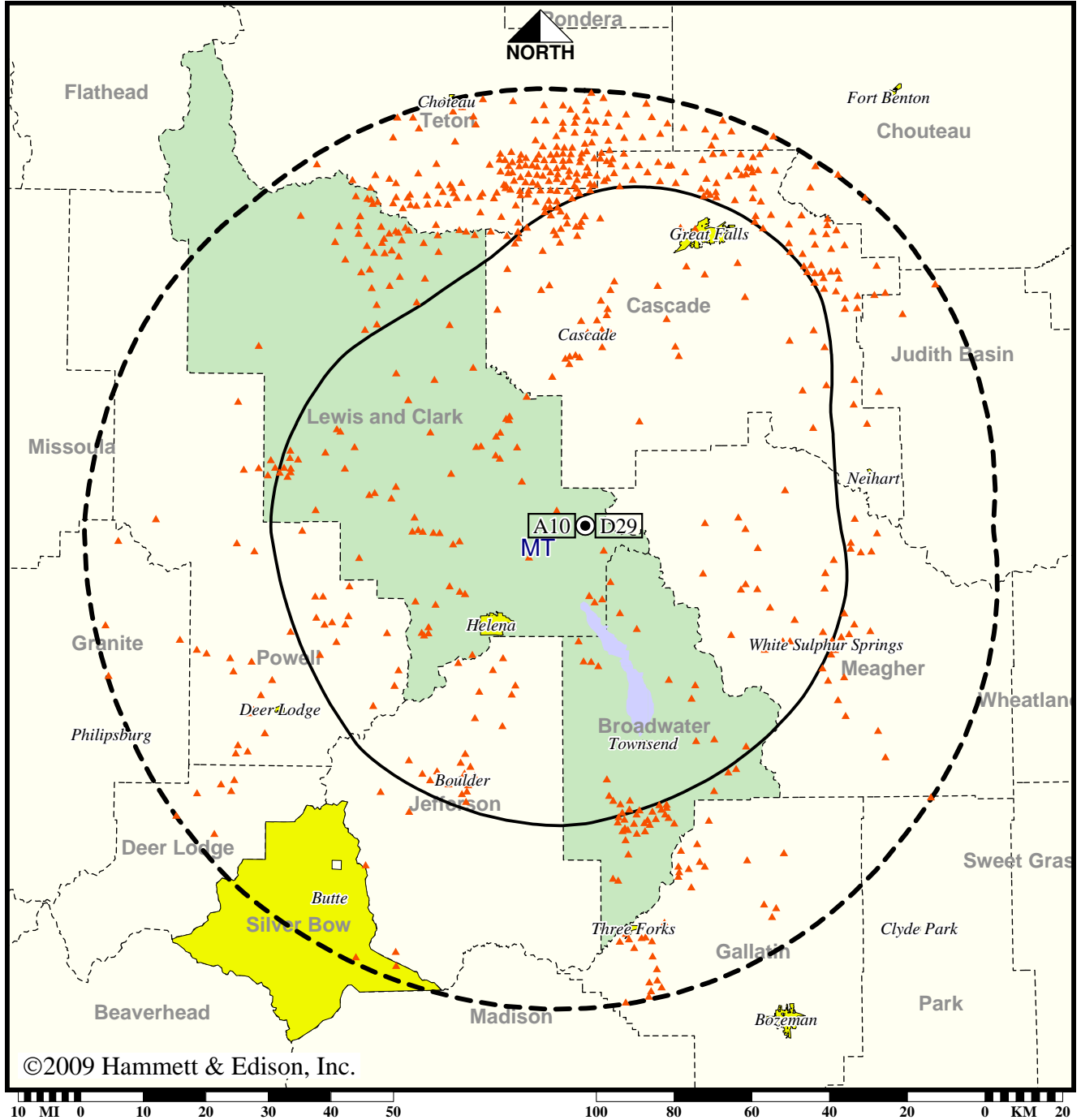
Analog service	149,013 persons
Digital service	131,304
Analog loss	17,709
Digital gain	0
Net gain	-17,709

TV Station KMTF • Analog Channel 10, DTV Channel 29 • Helena, MT

Approved Post-Transition Operation: Granted Construction Permit

Digital CP (solid): 43.4 kW ERP at 697 m HAAT  
 vs. Analog (dashed): 217 kW ERP at 711 m HAAT

Market: Helena, MT



- No symbol = no change in coverage
- ▲ Coverage lost after DTV transition

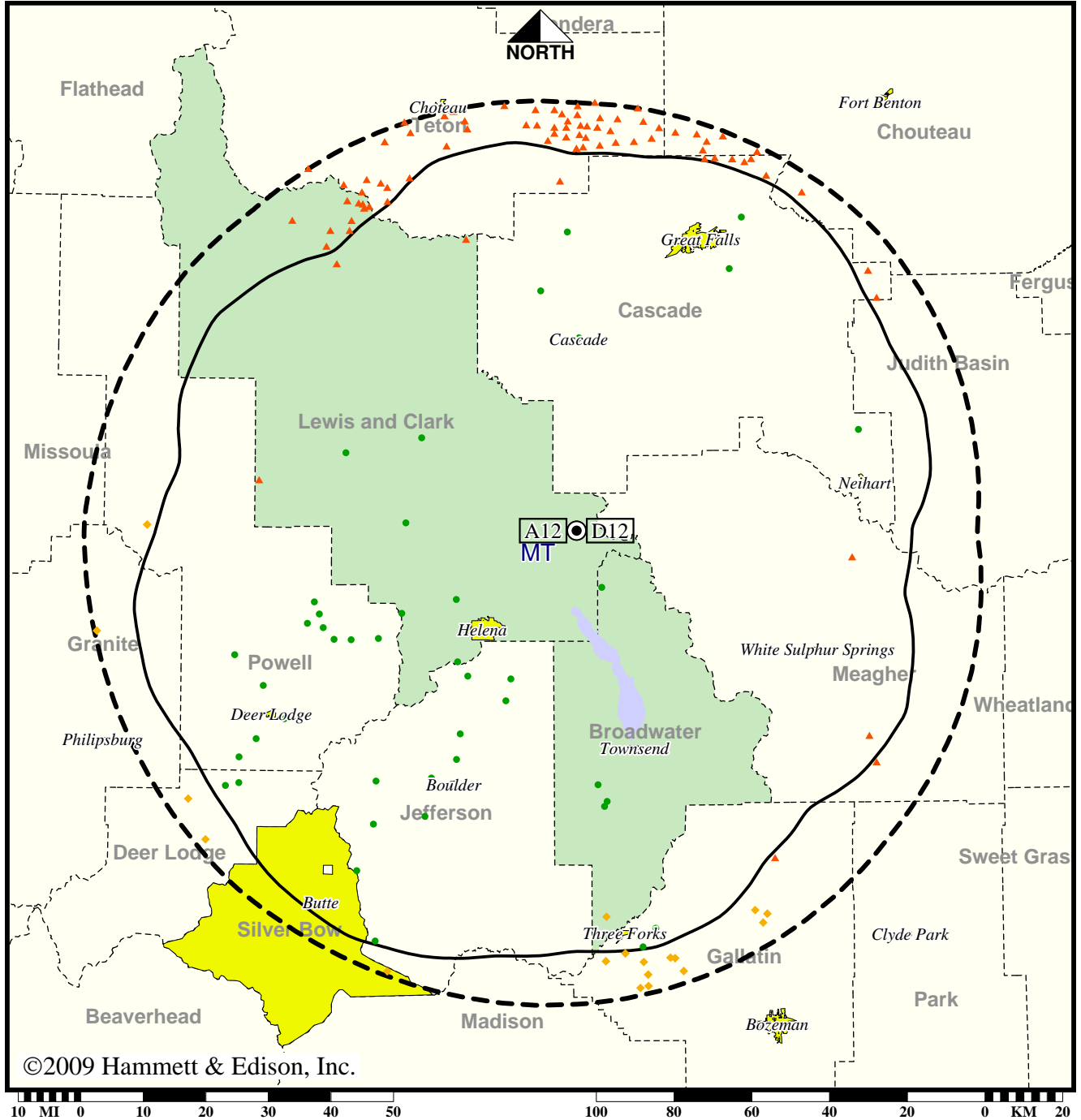
Analog service	149,013 persons
Digital service	131,304
Analog loss	17,709
Digital gain	0
Net gain	-17,709

TV Station KTVH • Analog Channel 12, DTV Channel 12 • Helena, MT

Expected Operation on June 13: Appendix B Facility

Digital Appendix B (solid): 9.36 kW ERP at 697 m HAAT, Network: NBC  
 vs. Analog (dashed): 180 kW ERP at 711 m HAAT, Network: NBC

Market: Helena, MT



©2009 Hammett & Edison, Inc.

- Coverage gained after DTV transition
- No symbol = no change in coverage
- ◆ Coverage lost but still served by same network
- ▲ Coverage lost and no other service by same network

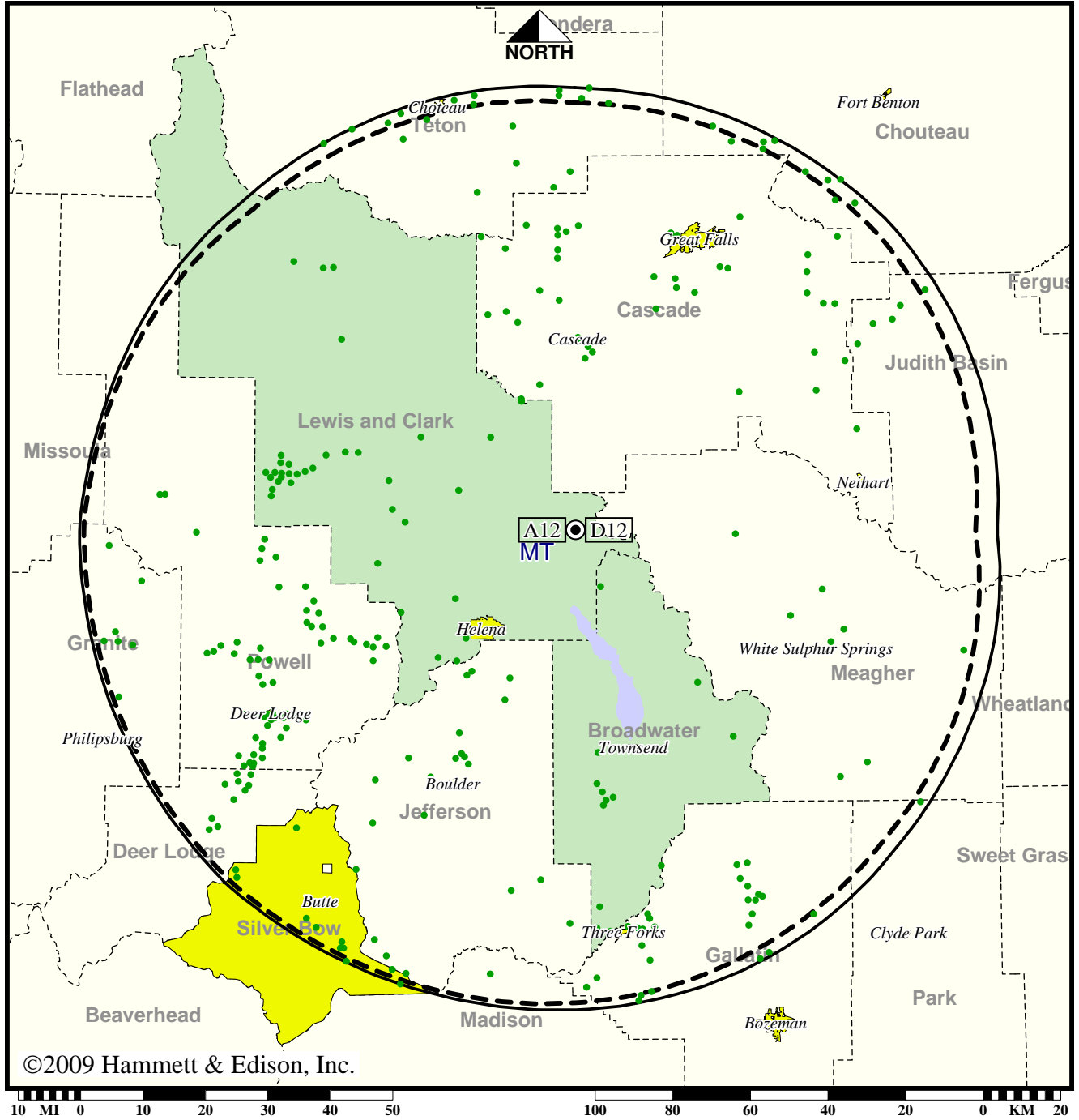
Analog service	147,558 persons
Digital service	148,395
Analog loss	1,368
Digital gain	2,205
Net gain	837

TV Station KTVH • Analog Channel 12, DTV Channel 12 • Helena, MT

Approved Post-Transition Operation: Granted Construction Permit

Digital CP (solid): 17.5 kW ERP at 713 m HAAT, Network: NBC  
 vs. Analog (dashed): 180 kW ERP at 711 m HAAT, Network: NBC

Market: Helena, MT



©2009 Hammett & Edison, Inc.

- Coverage gained after DTV transition
- No symbol = no change in coverage

Analog service	147,558 persons
Digital service	158,381
Analog loss	0
Digital gain	10,823
Net gain	10,823