

SKYHOOK^o

Hybrid Location

Skyhook Inc.

- Founded in 2003.
- Based in Boston, MA.
 - Operations in Asia, Europe
 - Global coverage & customer base
- Privately held.
- Strong patent portfolio

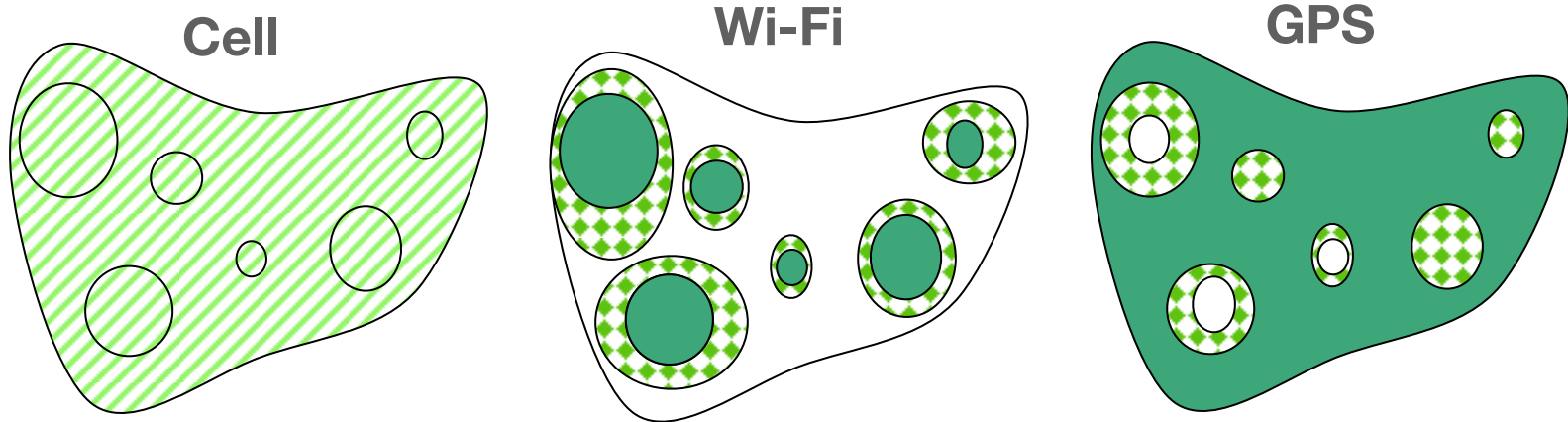


Skyhook Overview

- Skyhook's Location Technology combines signals from Wi-Fi, GPS and cell towers to quickly and accurately determine device location.
- Over 500m beacons worldwide.
- Deployed on over 100m devices.

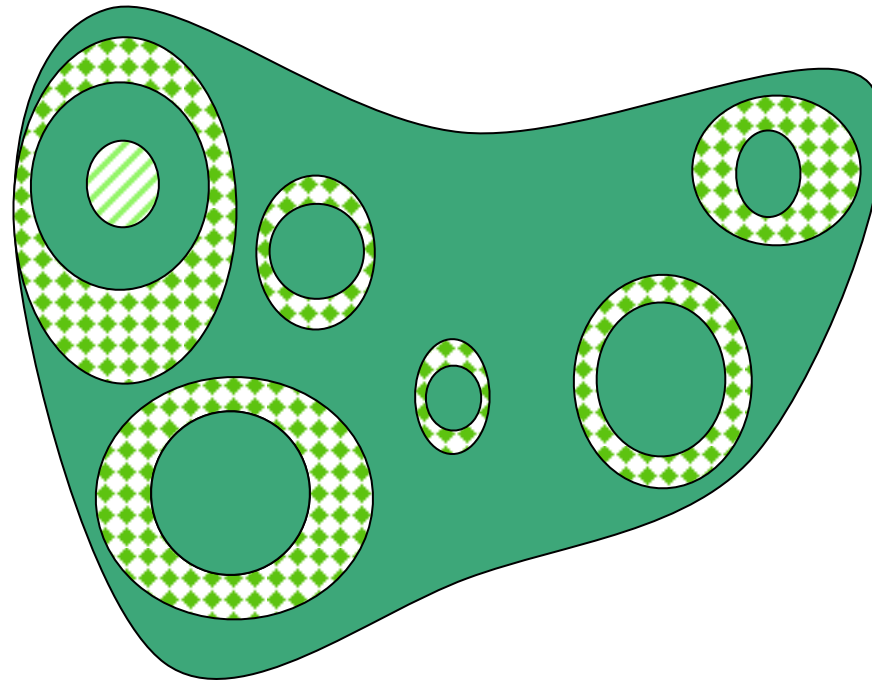


Positioning Systems



Coverage	Universal	Urban indoor/outdoor	Outdoor/limited indoor
Accuracy	150-700m	20-40m	10m
Confidence	High	Low/Medium	High
TTFF	1-2sec	1-5sec	1-60sec

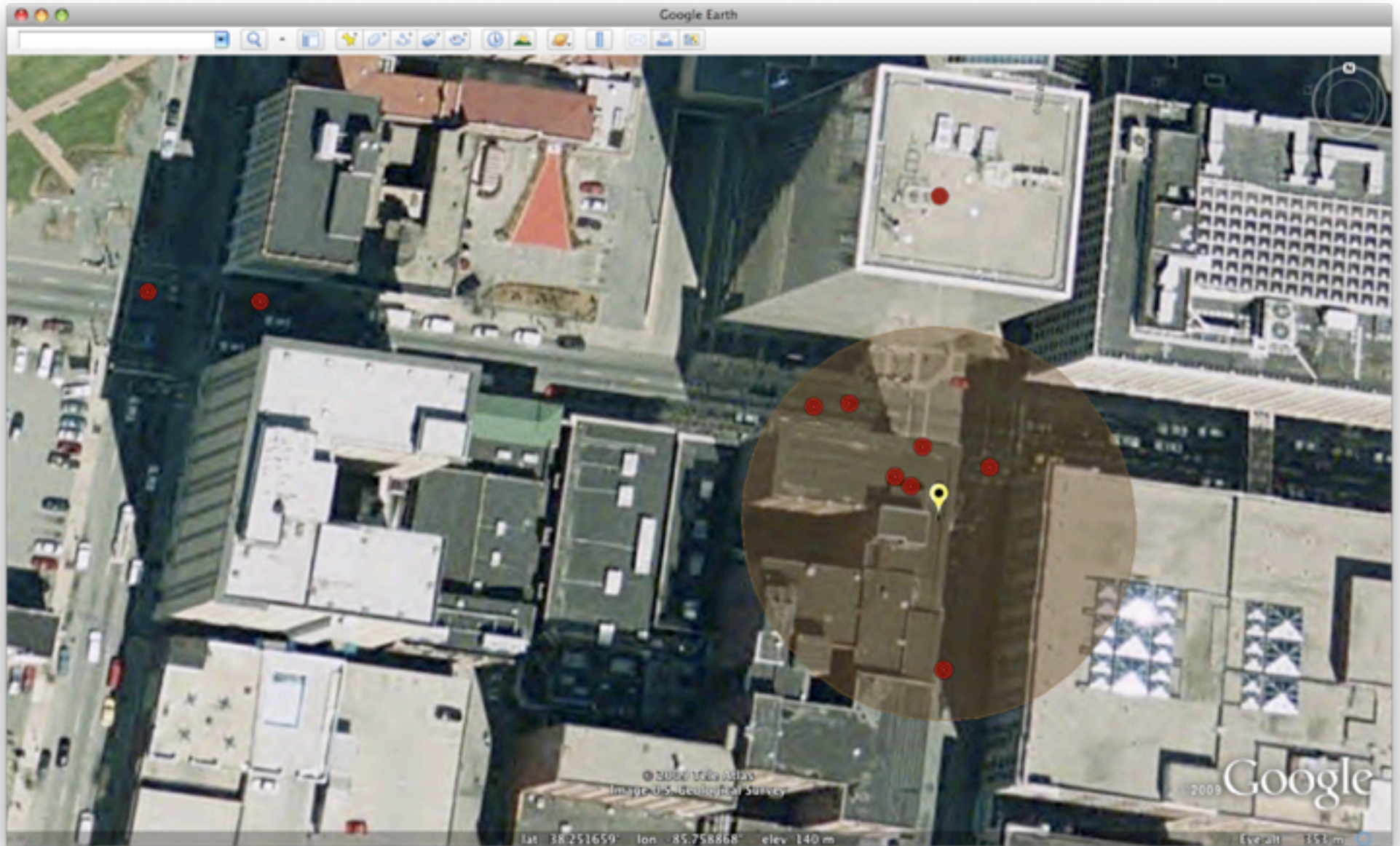
Hybrid Positioning System



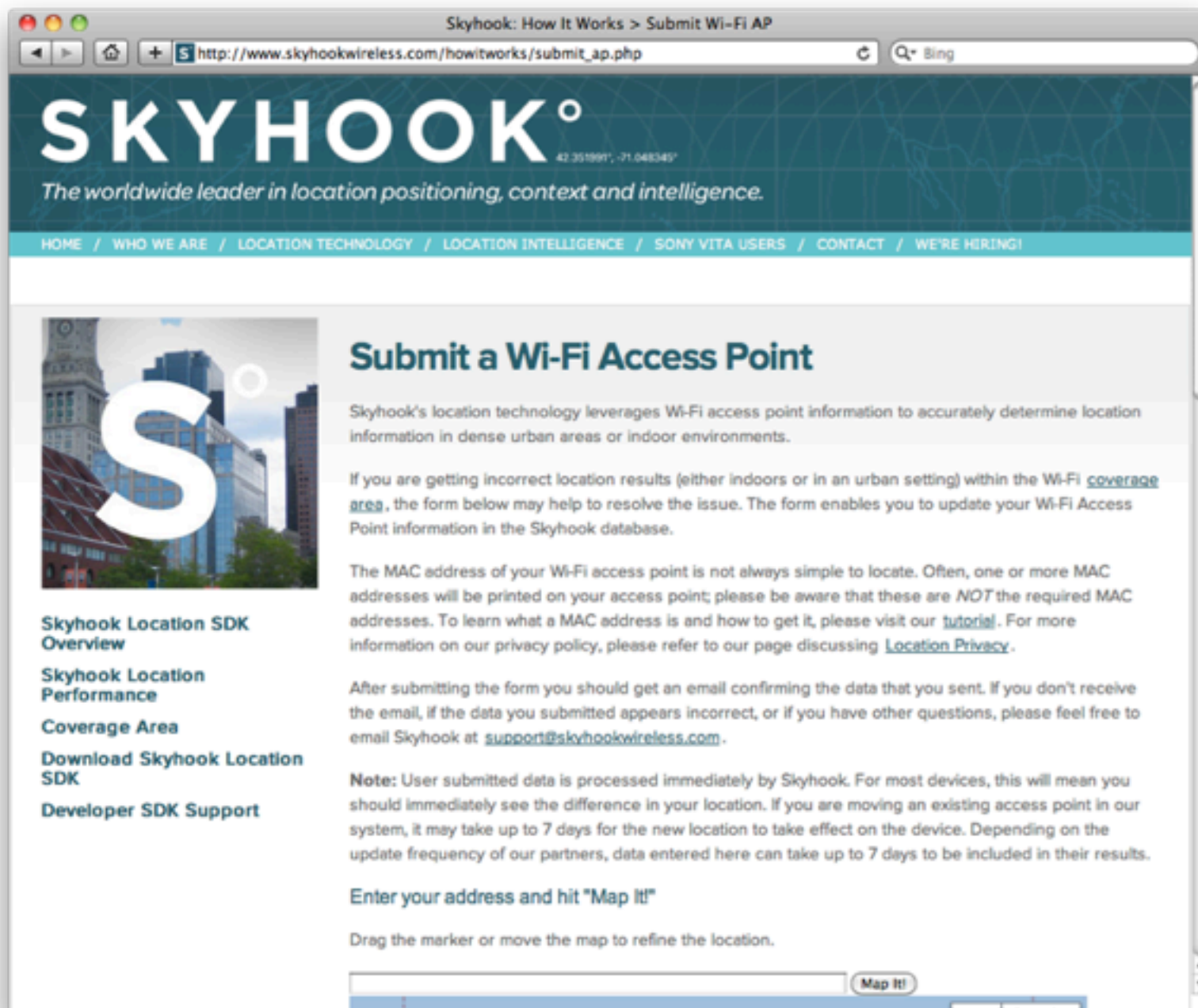
Cellular Tower vs Wi-Fi Positioning



Wi-Fi Positioning



User Submitted Wi-Fi Access Point



Skyhook: How It Works > Submit Wi-Fi AP

http://www.skyhookwireless.com/howitworks/submit_ap.php

Bing

SKYHOOK^o

42.351991, -71.048345

The worldwide leader in location positioning, context and intelligence.

HOME / WHO WE ARE / LOCATION TECHNOLOGY / LOCATION INTELLIGENCE / SONY VITA USERS / CONTACT / WE'RE HIRING!

Submit a Wi-Fi Access Point

Skyhook's location technology leverages Wi-Fi access point information to accurately determine location information in dense urban areas or indoor environments.

If you are getting incorrect location results (either indoors or in an urban setting) within the [Wi-Fi coverage area](#), the form below may help to resolve the issue. The form enables you to update your Wi-Fi Access Point information in the Skyhook database.

The MAC address of your Wi-Fi access point is not always simple to locate. Often, one or more MAC addresses will be printed on your access point; please be aware that these are *NOT* the required MAC addresses. To learn what a MAC address is and how to get it, please visit our [tutorial](#). For more information on our privacy policy, please refer to our page discussing [Location Privacy](#).

After submitting the form you should get an email confirming the data that you sent. If you don't receive the email, if the data you submitted appears incorrect, or if you have other questions, please feel free to email Skyhook at support@skyhookwireless.com.

Note: User submitted data is processed immediately by Skyhook. For most devices, this will mean you should immediately see the difference in your location. If you are moving an existing access point in our system, it may take up to 7 days for the new location to take effect on the device. Depending on the update frequency of our partners, data entered here can take up to 7 days to be included in their results.

Enter your address and hit "Map It!"

Drag the marker or move the map to refine the location.

Map It!



Conclusion

Skyhook Location System:

A. Ubiquitous

- Works outdoors and indoors

B. Accurate

- 20-40m

C. Fast

- 1-5s

D. Reliable

- Multiple sources increase confidence of locations
- Self-Healing



Thank You!

Nick Brachet, CTO

nbrachet@skyhookwireless.com

Twitter: @SkyhookWireless

