

Figure 1 — The Internet Spiral

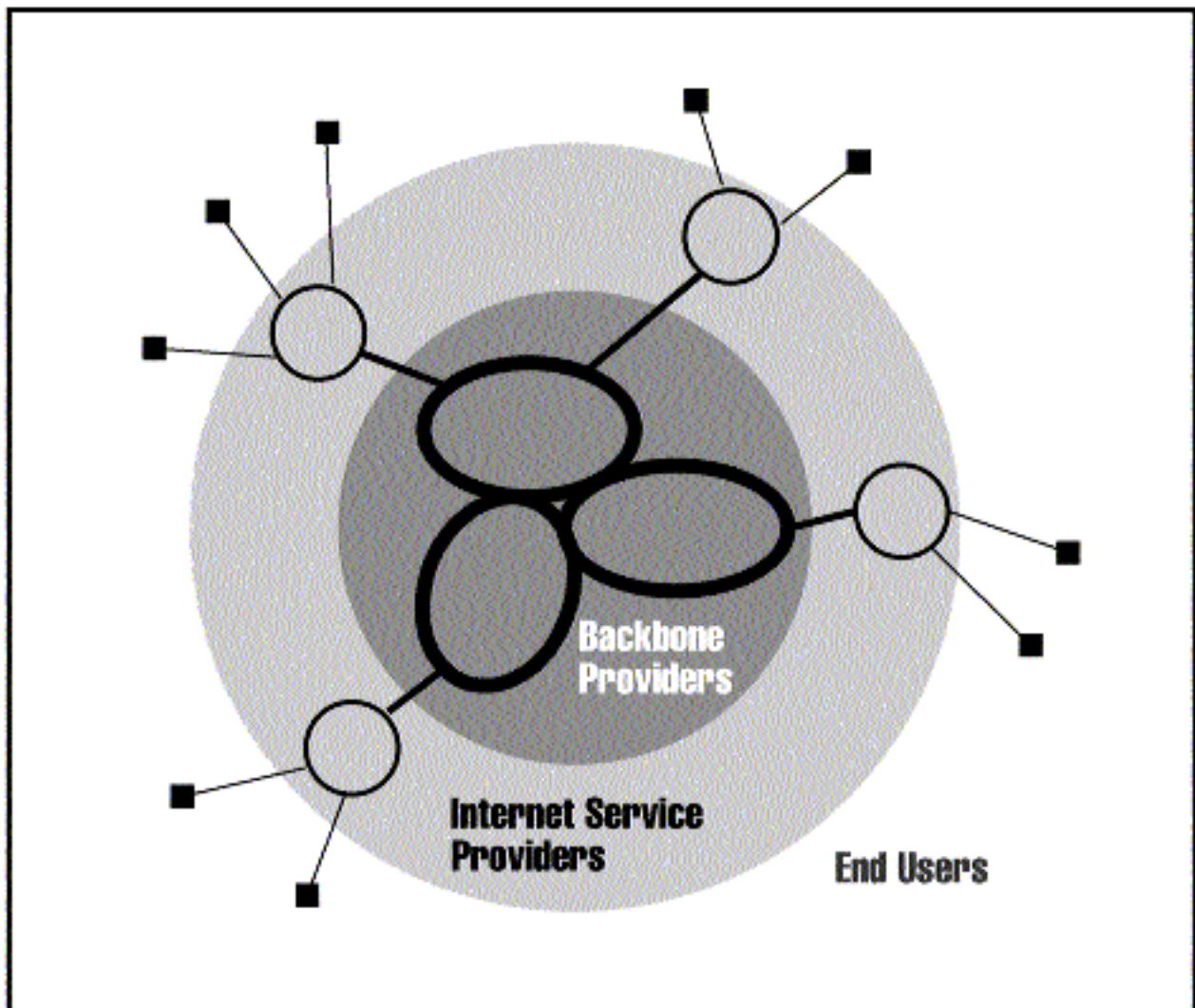


Figure 2 — Conceptual Overview of the Internet

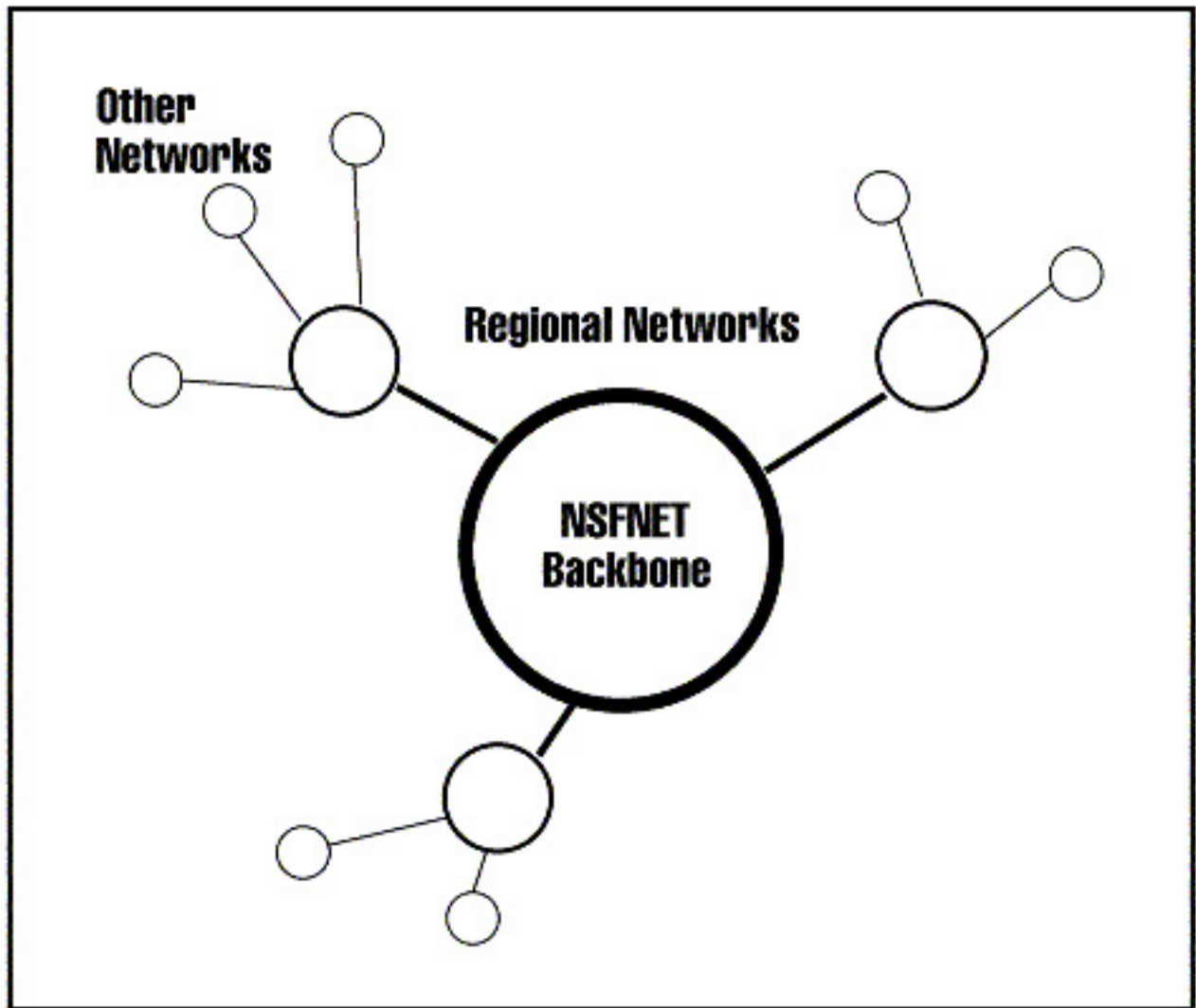
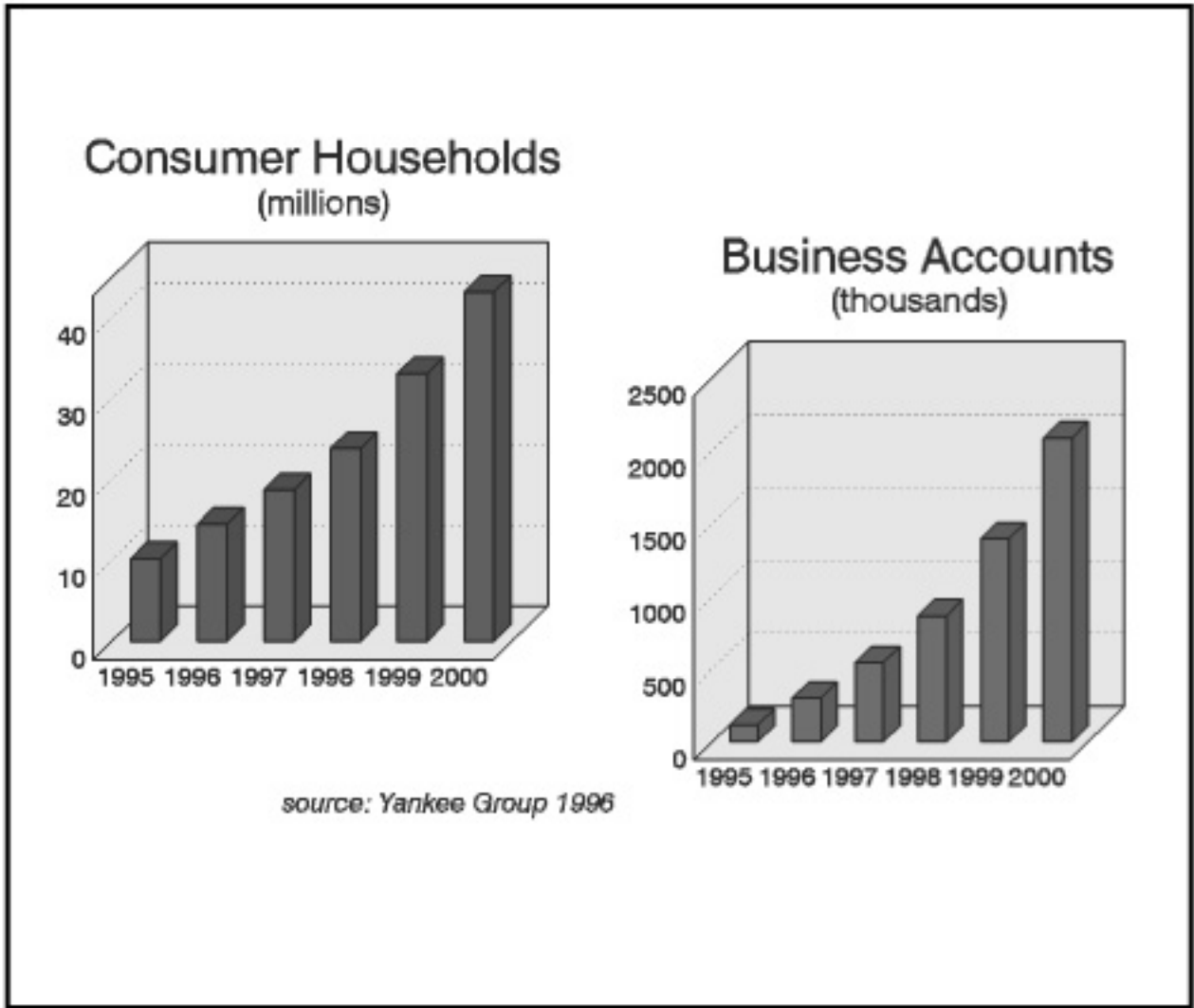
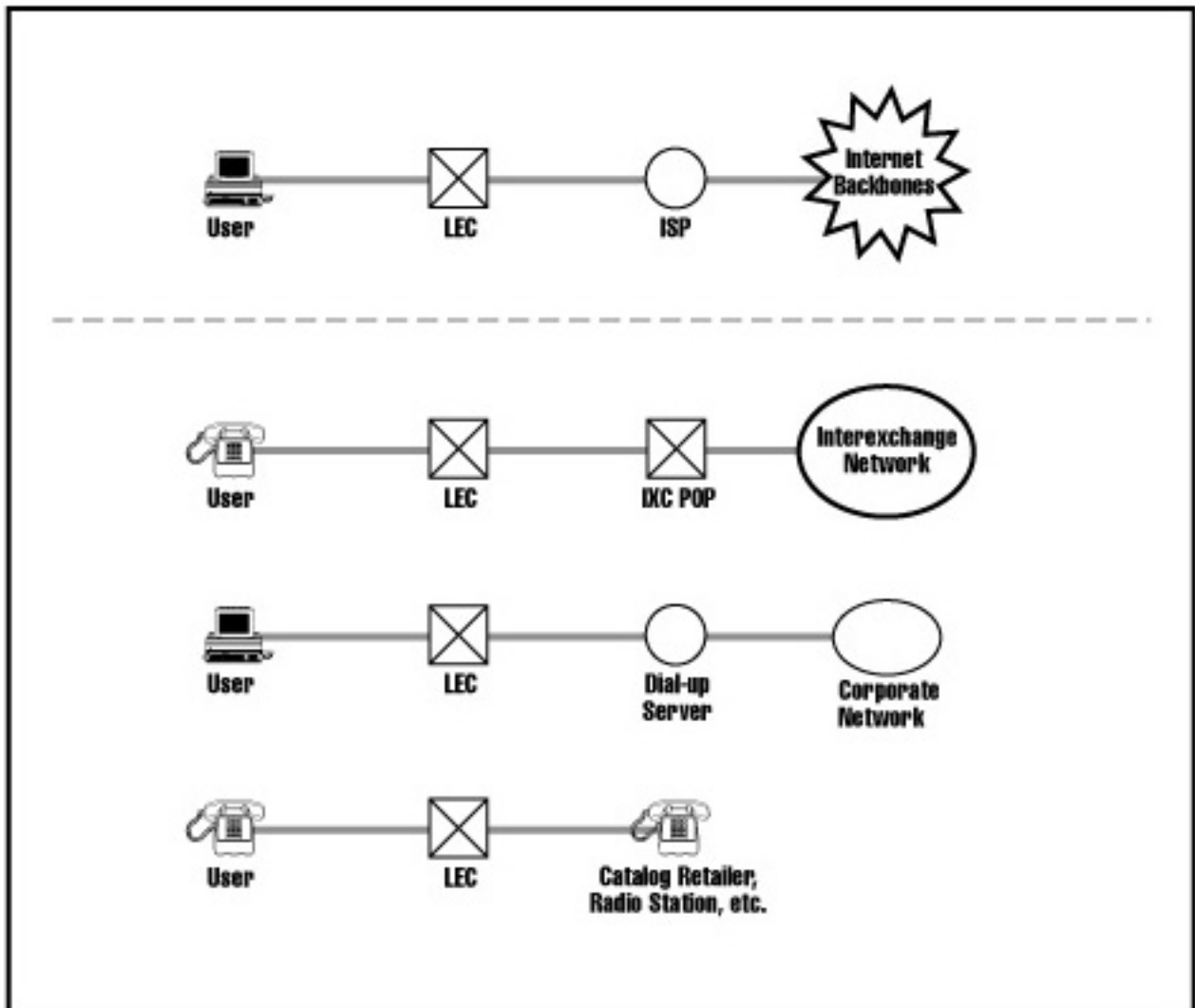


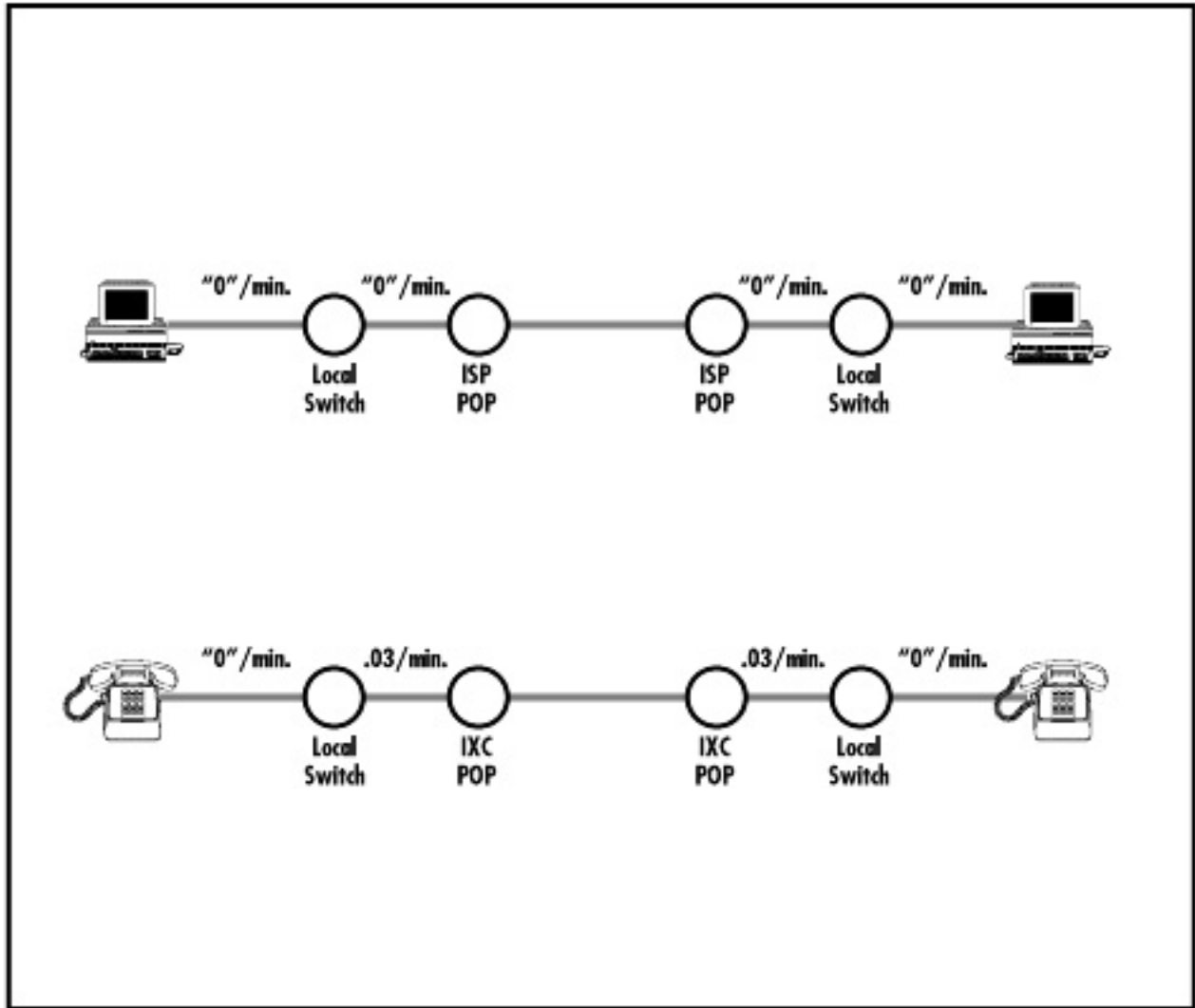
Figure 3 — NSFNET Architecture



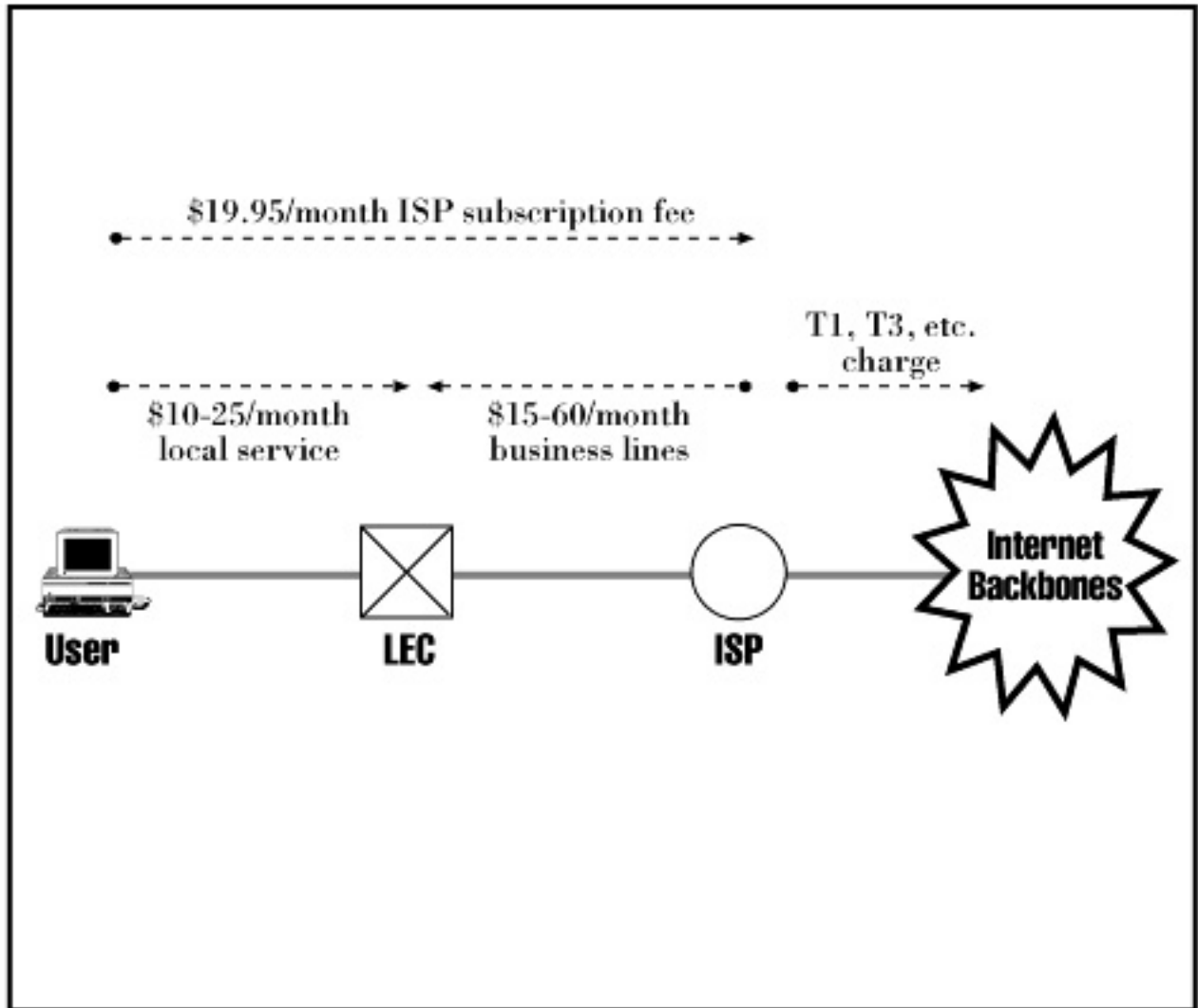
**Figure 4 — Internet Growth Projections**



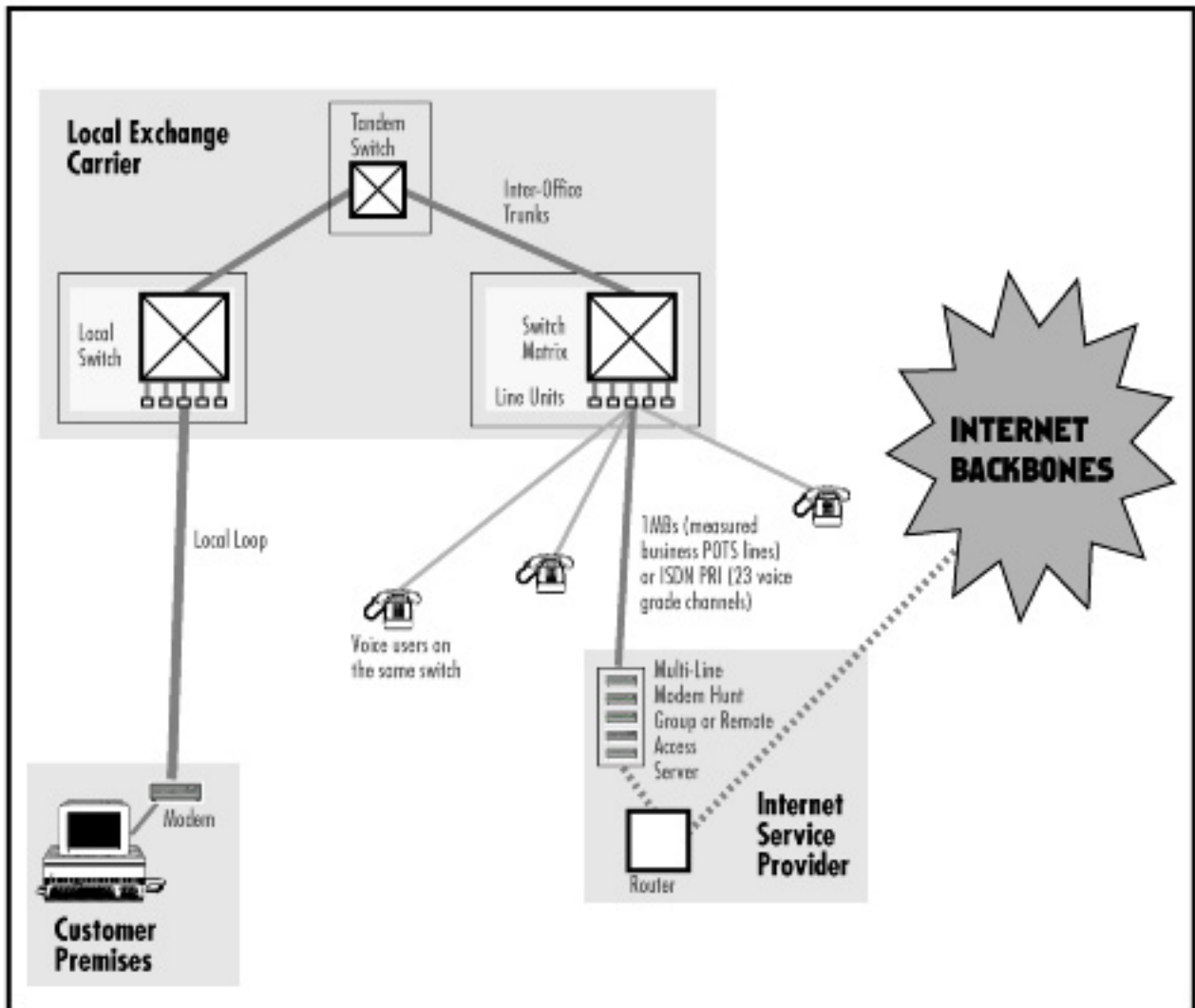
**Figure 5 — What is the Correct Analogy?**



**Figure 6 — Internet vs. Conventional Telephony**



**Figure 7 — Current Dial-Up Internet Access Pricing**



**Figure 8 — Typical Dial-Up Internet Access Architecture**



	Office Avg. Busy Hour Usage	ISP Avg. Busy Hour Usage	Office Avg. Call Hold Time	ISP Avg. Call Hold Time
<b>BELL ATLANTIC</b>	3 CCS	26-28 CCS	4-5 minutes	17.7 minutes
<b>US WEST</b>	3 CCS	27 CCS	2.4 minutes	16.7 minutes
<b>PACIFIC BELL</b>	4 CCS	19 CCS	3.8 minutes	20.8 minutes

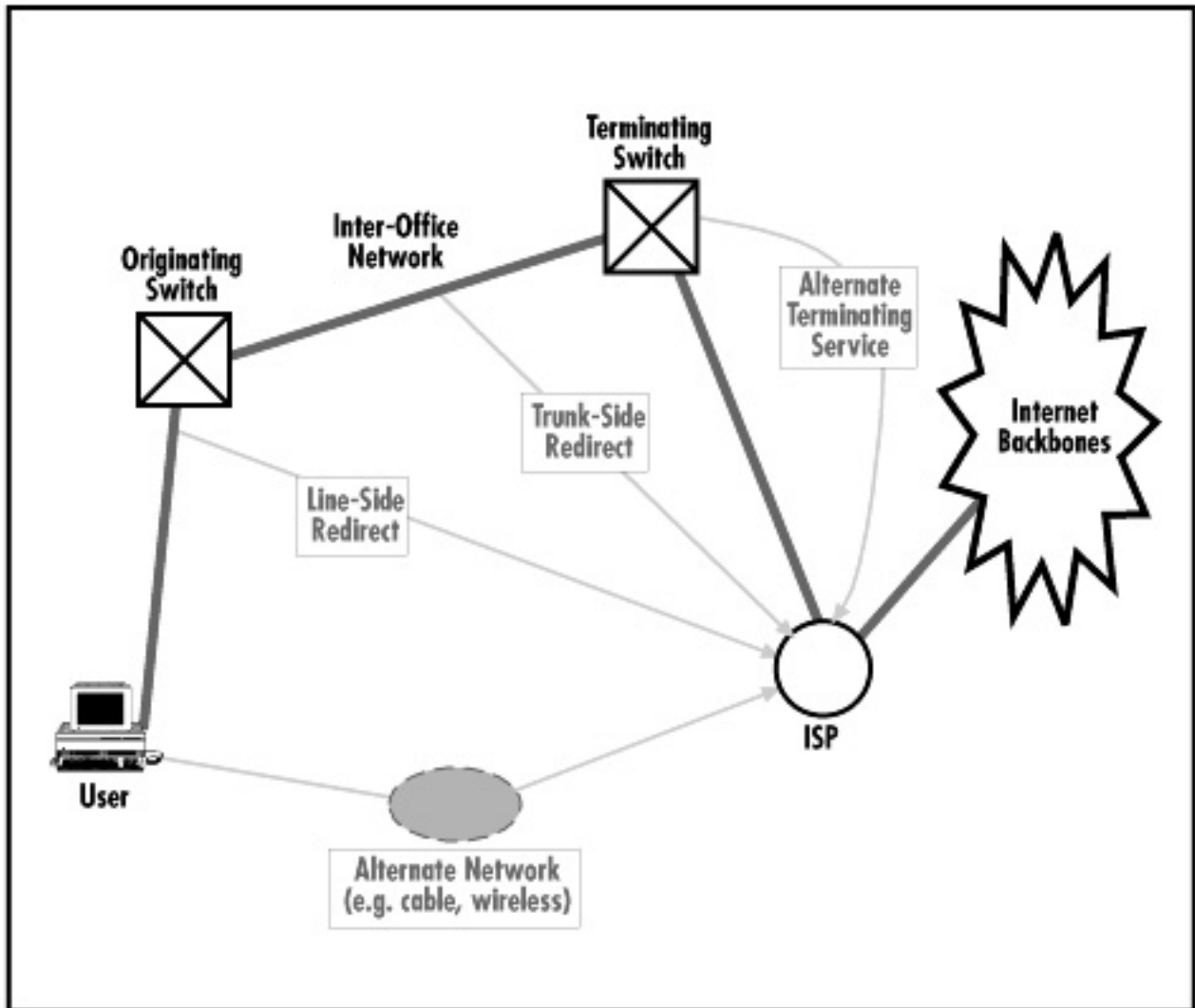
*Source: studies submitted to the FCC based on traffic during first quarter 1996 (available in file CCB/CPD 96-16)*

CCS means 100 call seconds (e.g. 6 CCS = 600 seconds or ten minutes).

"Busy hour usage" means the amount a circuit is in use during the busiest hour of the day.

"Call hold time" means the length of an individual call.

**Figure 9 — RBOC Network Usage Studies**



**Figure 10 — Some Solutions to Switch Congestion**

